



2 Kingfisher View Old Castletown Road, Douglas, IM1 5AW
Asking Price £395,000

- Stunning 3 Bedroom New Build Home
 - Walking Distance to Town
- Primary Bedroom with Ensuite Bathroom
- Beautiful Views of the River Glass
 - Stylish Modern Kitchen
 - No Onward Chain
- 2 Covered Parking Spaces
 - Fitted with Solar Panels



Enjoying an idyllic riverside position with attractive open views over the River Glass, this beautifully presented new build semi-detached townhouse offers stylish, energy-efficient living in a highly sought-after and convenient Douglas location. Set on a notably generous plot, the property provides an excellent balance of space, privacy and modern design.

Built to a high specification, the home incorporates quality contemporary finishes throughout, enhanced thermal insulation and solar panels, ensuring both comfort and efficiency for modern living.

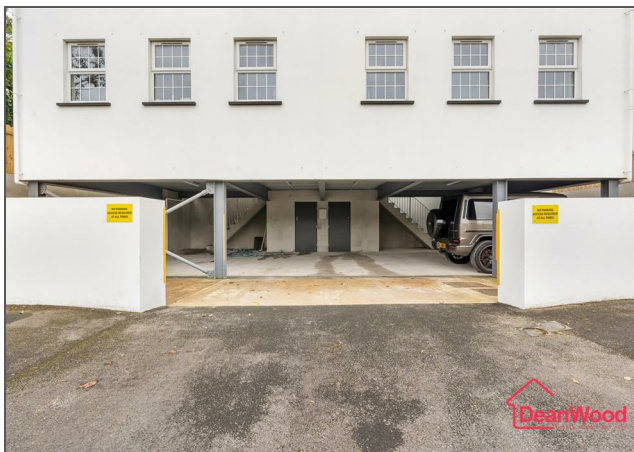
Perfectly placed, the property is within easy walking distance of Douglas Marina with its vibrant selection of bars and restaurants, as well as the town centre, including Strand Street and Athol Street's financial and business district, making it ideal for both professionals and families alike.

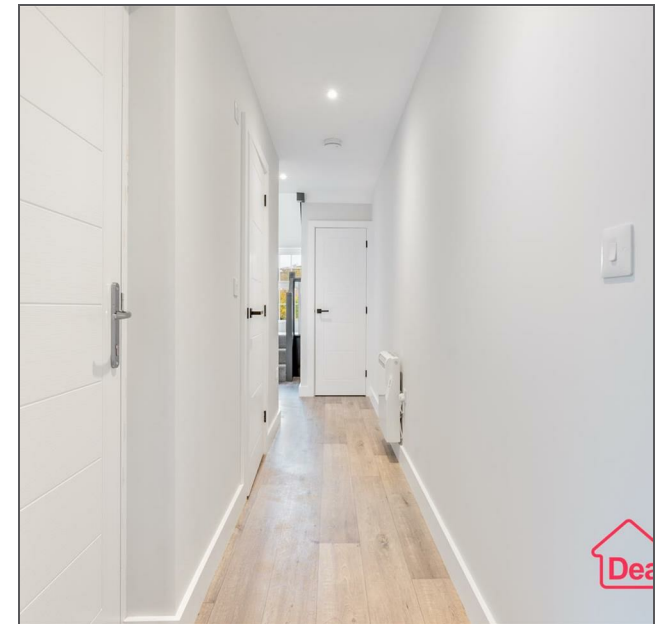
The accommodation is thoughtfully arranged over two levels and designed to maximise natural light. The ground floor features a welcoming entrance hall, a sleek, well-appointed contemporary kitchen, cloakroom, and a bright, spacious lounge with a pleasant outlook, ideal for both everyday living and entertaining.

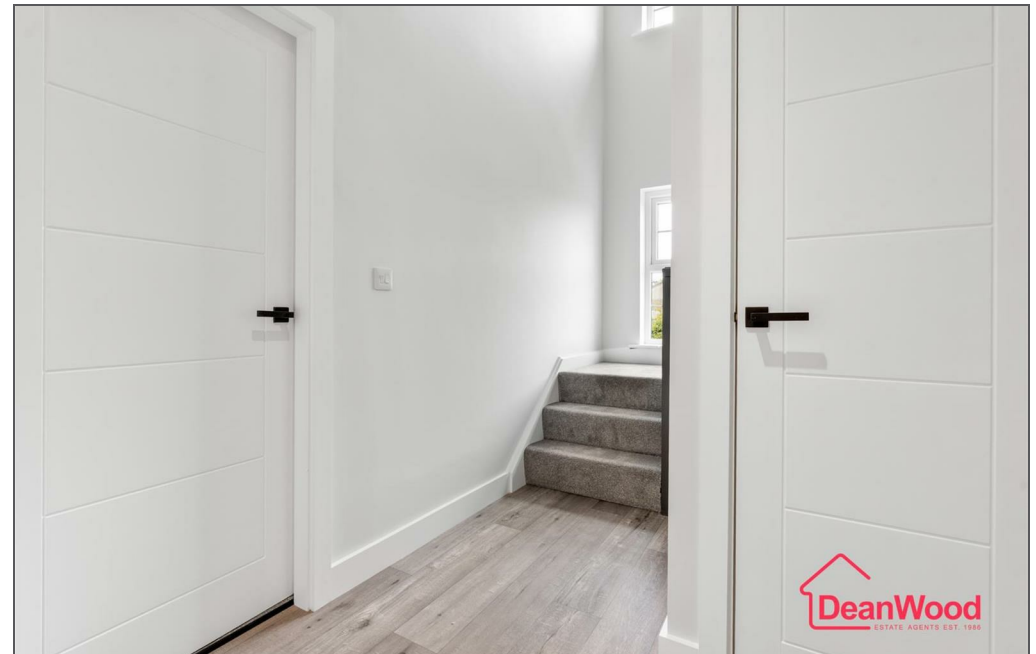
To the first floor are three well-proportioned bedrooms, including a principal bedroom with a modern ensuite shower room, complemented by a stylish family bathroom.

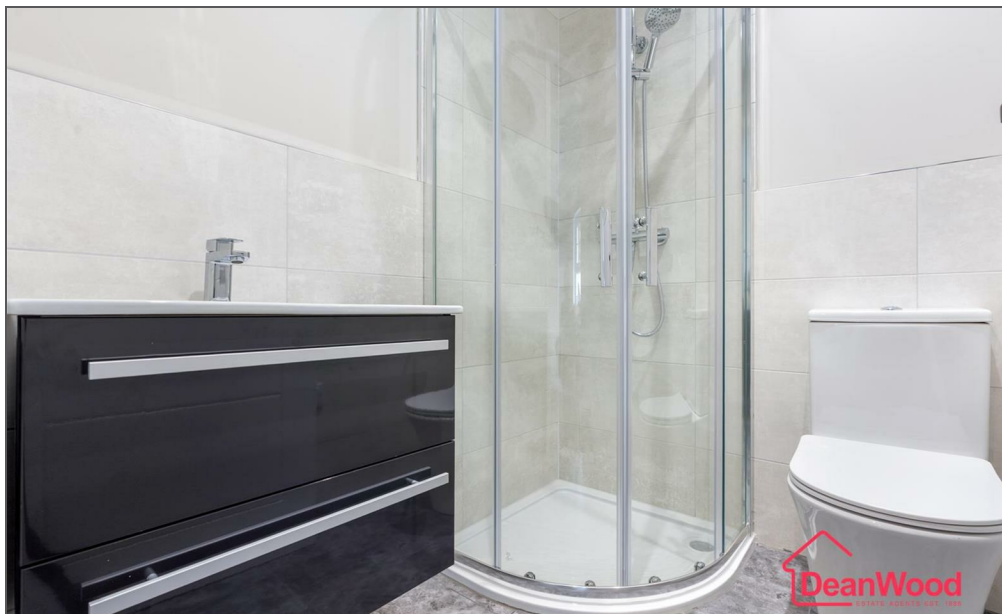
Externally, the property continues to impress. Sitting on a large plot, it benefits from a low-maintenance frontage and a private paved rear courtyard; perfect for relaxing or outdoor dining. A standout feature is the provision of two covered, private off-road parking spaces at ground level, along with a practical utility/store room.

Offered for sale with no onward chain, this is a superb opportunity to acquire a turnkey, high-quality home in a desirable riverside setting.

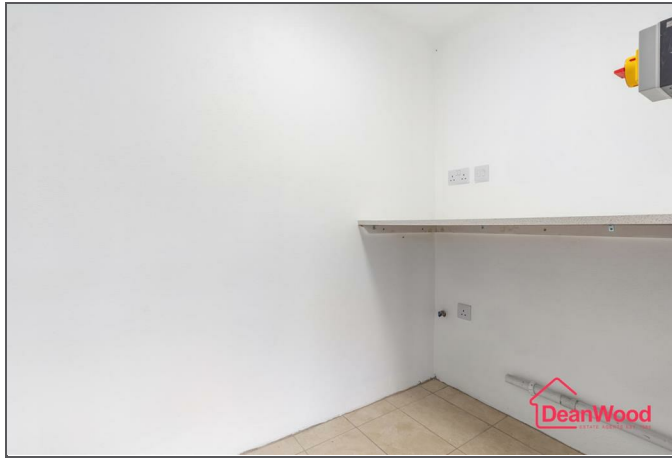






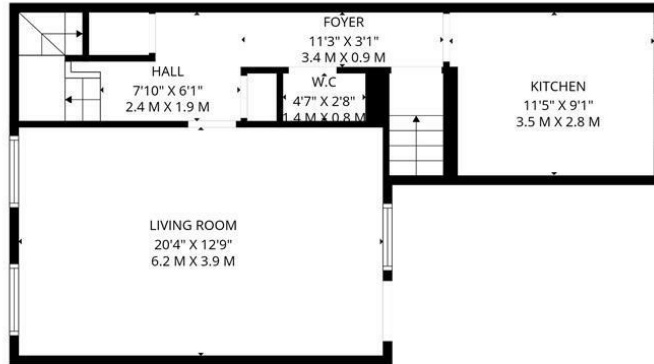




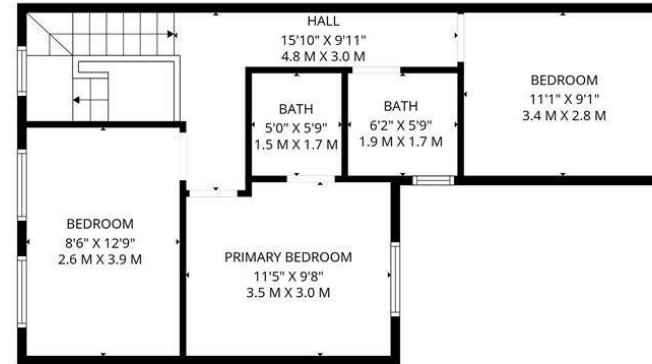


2 Kingfisher View Old Castletown Road, Douglas, IM1 5AW

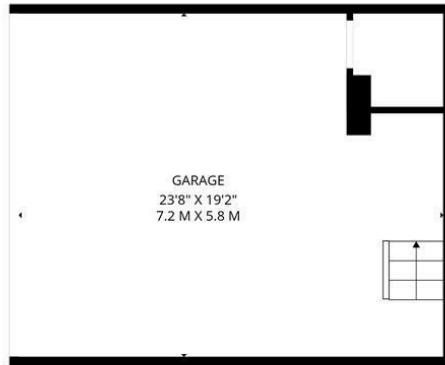




FLOOR 2



FLOOR 3



FLOOR 1

TOTAL: 1080 sq. ft, 100 m2

FLOOR 1: 26 sq. ft, 2 m2, FLOOR 2: 527 sq. ft, 49 m2, FLOOR 3: 527 sq. ft, 49 m2
 EXCLUDED AREAS: GARAGE: 424 sq. ft, 39 m2, WALLS: 160 sq. ft, 15 m2



FLOOR PLAN CREATED BY INVISION MEDIA & MARKETING. MEASUREMENTS DEEMED HIGHLY RELIABLE BUT NOT GUARANTEED.



DOUGLAS

37 VICTORIA STREET
 DOUGLAS
 ISLE OF MAN IM1 2LF

T 01624 620606
F 01624 677363
E info@deanwood.co.im

CASTLETOWN

COMPTON HOUSE
 9 CASTLE STREET CASTLETOWN
 ISLE OF MAN IM9 1LF

T 01624 825995
F 01624 825996
E castletown@deanwood.co.im

RAMSEY

LEZAYRE HOUSE
 87 PARLIAMENT STREET
 RAMSEY ISLE OF MAN IM8 1AQ

T 01624 816111
F 01624 816588
E ramsey@deanwood.co.im

These particulars are for information purposes only. They do not constitute or form any contract nor should any statement contained herein be relied upon as a representation of fact. Neither the vendor nor DeanWood Agencies Limited ('the firm'), nor any officer or employee of the firm accept liability or responsibility for any statement contained herein. The vendor does not by these particulars, nor does the firm, nor does any officer or any employee of the firm have any authority to make or give any representation or warranty whatsoever as regards the property or otherwise. It is the sole responsibility of any person interested in the property described in these particulars to make all proper enquiries and searches to verify the description of the property and all other particulars herein.

FOR MORE PROPERTIES VISIT OUR WEBSITE @ deanwood.im