

**8 HOOKS
CLOSE, ANSTEY LE7 7DA**

£169,000
LEASEHOLD

- 0116 236 7000
- sales@judgeestateagents.co.uk
- judgeestateagents.co.uk
- 13 The Nook, Anstey, Leicester,
Leicestershire, LE7 7AZ



2 2 1

THIS VERY WELL PRESENTED, TWO BEDROOM, FIRST FLOOR FLAT THAT IS LOCATED WITHIN CLOSE PROXIMITY TO THE CENTRE OF ANSTEY BOASTS CHARACTER AND CHARM WITHIN A MODERN/INDUSTRIAL BLOCK. AS YOU ENTER THIS LOVELY HOME THERE IS AN ENTRANCE HALL WITH DOORS THAT LEAD TO A LIVING/DINING THROUGH TO KITCHEN, TWO BEDROOMS, THE PRIMARY BEDROOM HAVING ACCESS TO THE EN-SUITE AS WELL AS A BATHROOM. THERE IS AN ALLOCATED OFF ROAD PARKING SPACE TO THE OUTSIDE. A VIEWING COMES HIGHLY RECOMMENDED TO FULLY APPRECIATE.



ENTRANCE HALL

There is an airing cupboard with doors that lead to:

LIVING/DINING AREA 14'9 - 11'10 x 17'1

Benefiting from dual windows, electric storage heaters, power points and access through to:

KITCHEN 9'9 x 8'2

Having a range of wall and base units with work surfaces, sink with a mixer tap, integral oven, hob with extractor, plumbing for a washing machine and power points.

PRIMARY BEDROOM 15'11 x 9'3

Benefiting from dual windows, electric storage heater, power points, fitted wardrobes and a door that leads to:

EN-SUITE

Comprising a low level WC, wash hand basin, walk in shower, complimentary tiling, heated towel rail and a window.

BEDROOM 11'11 x 7'4

There is a window, electric storage heater and power points.

BATHROOM

Comprising a low level WC, wash hand basin, bath, complimentary tiling and a heated towel rail.

PARKING

There is an allocated off road parking space.

LEASEHOLD INFORMATION:

The seller has informed us of the following:
 Length of lease - 125 years since April 2007
 Ground Rent: £394 per annum
 Service Charge: £1,518 per annum

ANSTHEY VILLAGE

Situated just off the A46 Leicester Western By-Pass which allows for a quick and easy access to the M1 at junction 21a, whilst further north is the A52 to both Nottingham and Grantham. Regular bus services run into Leicester where there is a Main Line railway station. Trains to London (St. Pancras) take from one hour and the East Midlands International Airport is approximately 25 minutes drive away, traffic allowing.

Anstey is a Leicestershire village on the edge of the renowned Charnwood and National Forests with their many scenic country walks and golf courses. The village is situated north-west of Leicester's City centre which is just four miles away. Anstey still retains some of the charm of a traditional village but with easy access to major road routes. The village has a variety of different shops and services making it the commercial centre for surrounding smaller villages. A supermarket is close by and a number of independent, family run business including our office can be found as well as Post Office, Vets, restaurants and a couple of fast-food outlets. There is a regular bus service which operates to Leicester, Loughborough, Rothley, Cropston and Quorn. Football and cricket teams are within the village. Anstey also has a GP surgery, dentist and pubs. There are two primary schools (Latimer and Woolden Hill) plus The Martyn High School for Secondary Education.

VIEWINGS

We always like any potential purchaser to follow our four steps

- 1) Read property description
- 2) Look at Floorplan
- 3) Watch our virtual viewing video
- 4) Please provide and assist proof of affordability

After these stages, we are happy to arrange a viewing suitable to both purchaser and vendor.

MEASUREMENTS & FLOORPLANS

Purchasers should note that if a floor plan is included within property particulars it is intended to show the relationship between rooms and does not reflect exact dimensions or indeed seek to exactly replicate the layout of the property. Floor plans are produced for guidance only and are not to scale. Every care has been taken to reflect the true dimensions of this property but they should be treated as approximate and for general guidance only.

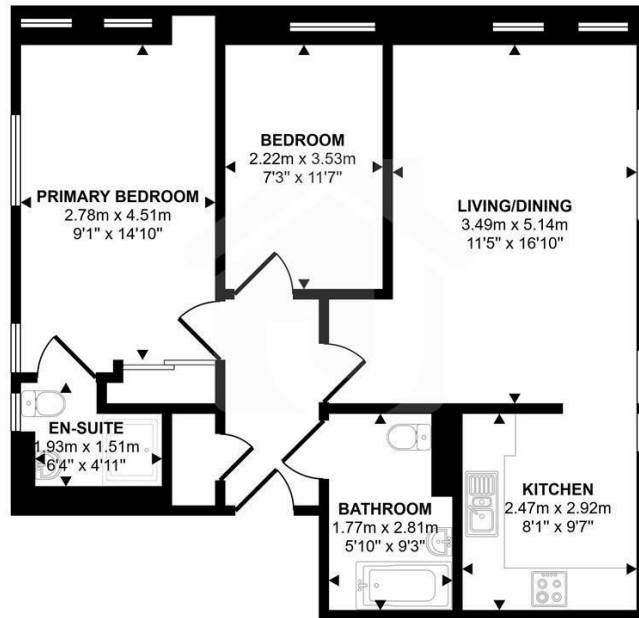
MONEY LAUNDERING

In line with current money laundering regulations, prospective buyers will be asked to provide us with photo I.D. (e.g. Passport, driving licence, bus pass etc) and proof of address (e.g. Current utility bill, bank statement etc). We ask for your cooperation in this matter as this information will be required before a sale can be agreed.

1. MONEY LAUNDERING REGULATIONS: Intending purchasers will be asked to produce identification documentation at a later stage and we would ask for your co-operation in order that there will be no delay in agreeing the sale.
2. General: While we endeavour to make our sales particulars fair, accurate and reliable, they are only a general guide to the property and, accordingly, if there is any point which is of particular importance to you, please contact the office and we will be pleased to check the position for you, especially if you are contemplating travelling some distance to view the property.
3. The measurements indicated are supplied for guidance only and as such must be considered incorrect.
4. Services: Please note we have not tested the services or any of the equipment or appliances in this property, accordingly we strongly advise prospective buyers to commission their own survey or service reports before finalising their offer to purchase.
5. THESE PARTICULARS ARE ISSUED IN GOOD FAITH BUT DO NOT CONSTITUTE REPRESENTATIONS OF FACT OR FORM PART OF ANY OFFER OR CONTRACT. THE MATTERS REFERRED TO IN THESE PARTICULARS SHOULD BE INDEPENDENTLY VERIFIED BY PROSPECTIVE BUYERS OR TENANTS. JUDGE ESTATE AGENTS LIMITED NOR ANY OF ITS EMPLOYEES OR AGENTS HAS ANY AUTHORITY TO MAKE OR GIVE ANY REPRESENTATION OR WARRANTY WHATSOEVER IN RELATION TO THIS PROPERTY.



Approx Gross Internal Area
69 sq m / 743 sq ft



Floorplan

This floorplan is only for illustrative purposes and is not to scale. Measurements of rooms, doors, windows, and any items are approximate and no responsibility is taken for any error, omission or mis-statement. Icons of items such as bathroom suites are representations only and may not look like the real items. Made with Snappy 360.

LOCATION



MEASUREMENTS

Every care has been taken to reflect the true dimensions of this property but they should be treated as approximate and for general guidance only. This floorplan is only for illustrative purposes and is not to scale. Measurements of rooms, doors, windows, and any items are approximate and no responsibility is taken for any error, omission or mis-statement. Icons of items such as bathroom suites are representations only and may not look like the real items. Made with Snappy 360.



VIEWINGS

Viewings strictly by appointment via Judge Estate Agents.

We always like any potential purchaser to follow our four steps:

- 1 Read property description**
- 2 Look at floorplan**
- 3 Watch our virtual viewing video**
- 4 Please provide and assist proof of affordability**

After these stages, we are happy to arrange a viewing suitable to both purchaser and vendor.

LET'S TALK



0116 236 7000



judgeestateagents.co.uk



sales@judgeestateagents.co.uk



13 The Nook, Anstey, Leicester, Leicestershire, LE7 7AZ



All properties are listed on Rightmove, Zoopla & our website.



TERMS & CONDITIONS

Money laundering

In line with current money laundering regulations, prospective buyers will be asked to provide us with photo I.D. (e.g. Passport, driving licence, bus pass etc) and proof of address (e.g. Current utility bill, bank statement etc). We ask for your cooperation in this matter as this information will be required before a sale can be agreed.

1. Money laundering regulations: Intending purchasers will be asked to produce identification documentation at a later stage and we would ask for your co-operation in order that there will be no delay in agreeing the sale.

2. General: While we endeavour to make our sales particulars fair, accurate and reliable, they are only a general guide to the property and, accordingly, if there is any point which is of particular importance to you, please contact the office and we will be pleased to check the position for you, especially if you are contemplating travelling some distance to view the property.

3. The measurements indicated are supplied for guidance only and as such must be considered incorrect.

4. Services: Please note we have not tested the services or any of the equipment or appliances in this property, accordingly we strongly advise prospective buyers to commission their own survey or service reports before finalising their offer to purchase.

5. These particulars are issued in good faith but do not constitute representations of fact or form part of any offer or contract. The matters referred to in these particulars should be independently verified by prospective buyers or tenants. Judge estate agents limited nor any of its employees or agents has any authority to make or give any representation or warranty whatever in relation to this property.