



## Springfield Drive, SW17

£525,000

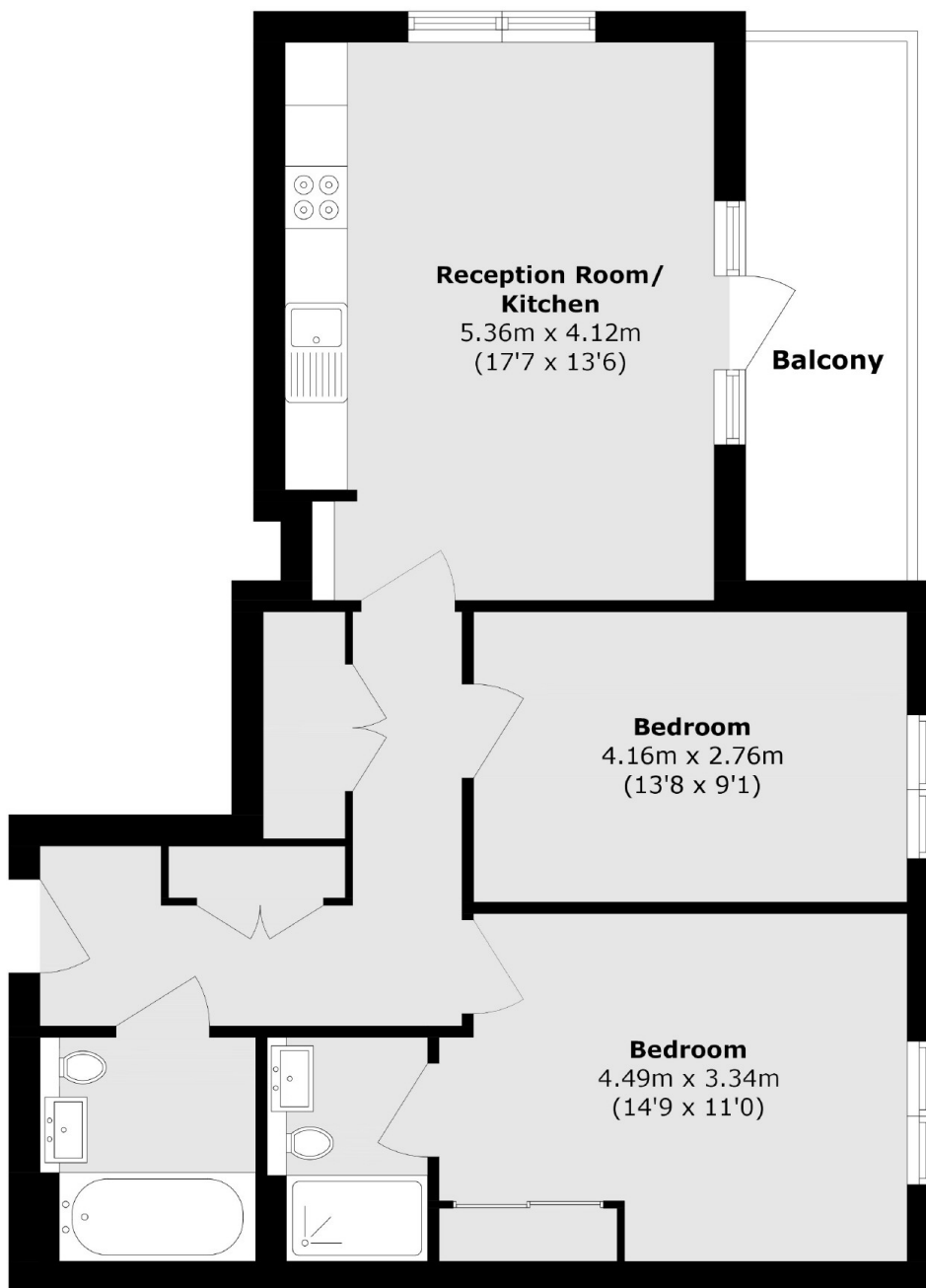
A beautifully presented and modern two double bedroom two bathroom apartment in the heart of Springfield Village with an immaculate interior. Opening onto a large open plan kitchen with fitted appliances, a comfortable seating and dining area and a private balcony, the property also benefits from two bathrooms.

Springfield Drive sits within the highly desirable Springfield Place development, nestled conveniently between the popular neighbourhoods of Earlsfield, Tooting Bec and Wandsworth Common, all offering fantastic transport links into Central London via the tube and multiple overground Stations. A gym, Sainsbury's Local, nursery and cafe are set within the grounds of Springfield Place as well as the vast array of shops, restaurants and pubs on Earlsfield and Tooting High St. A new 32-acre park alongside the green spaces of Wandsworth common are only a short stroll away.

### Features

- Two Double Bedrooms
- Balcony
- Modern Development
- Stylish Kitchen
- Two Bathrooms
- Springfield Place

# Springfield Drive, London, SW17



Total area (approx.): 69.3 sq. m (745.9 sq. ft)

Total Balcony Area (approx.): 8.0 sq. m (86.1 sq. ft)