



Worthington Close, CR4
£200,000

Dexters



Worthington Close, CR4

A well presented one bedroom ground floor apartment, ideally situated in a quiet cul-de-sac. The property benefits from its own private entrance and an allocated parking space, and is offered to the market chain-free.

Located just 0.6 miles from Mitcham Eastfields Station, the property enjoys excellent transport connections for commuters and is surrounded by a range of local amenities, with shops, cafés and restaurants nearby along Mitcham High Street. Residents can also benefit from easy access to extensive green spaces such as Mitcham Common and nearby parks, as well as community facilities including leisure centres, markets and schools.

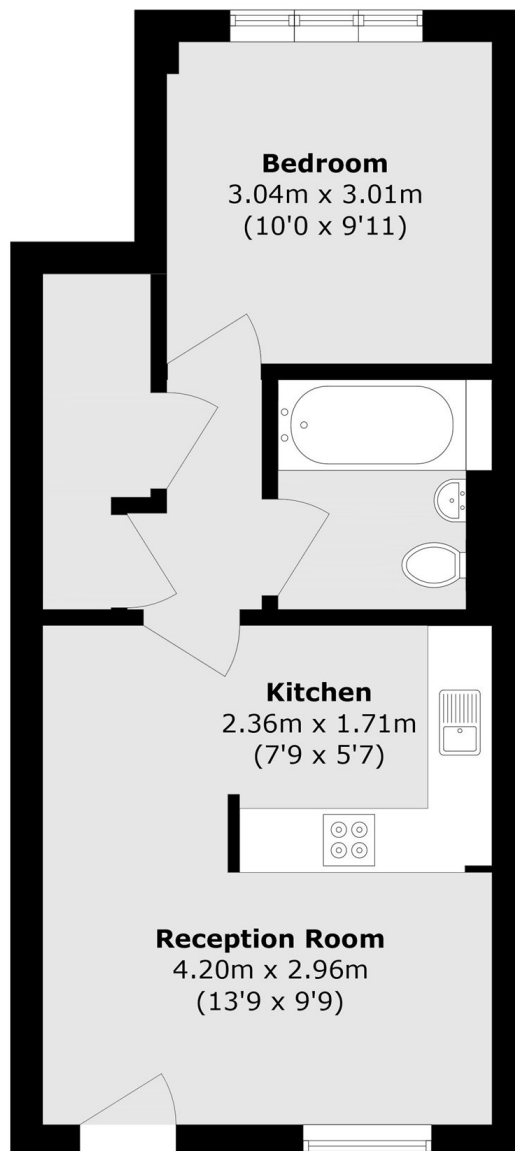
Features

- Chain free
- Low service charge
- Private entrance
- Allocated parking
- 0.6 miles to station
- EPC D





Worthington Close, Mitcham, CR4



Total area (approx.): 40.0 sq. m (430.5 sq. ft)