



## Garfield Road, SW11

£625,000

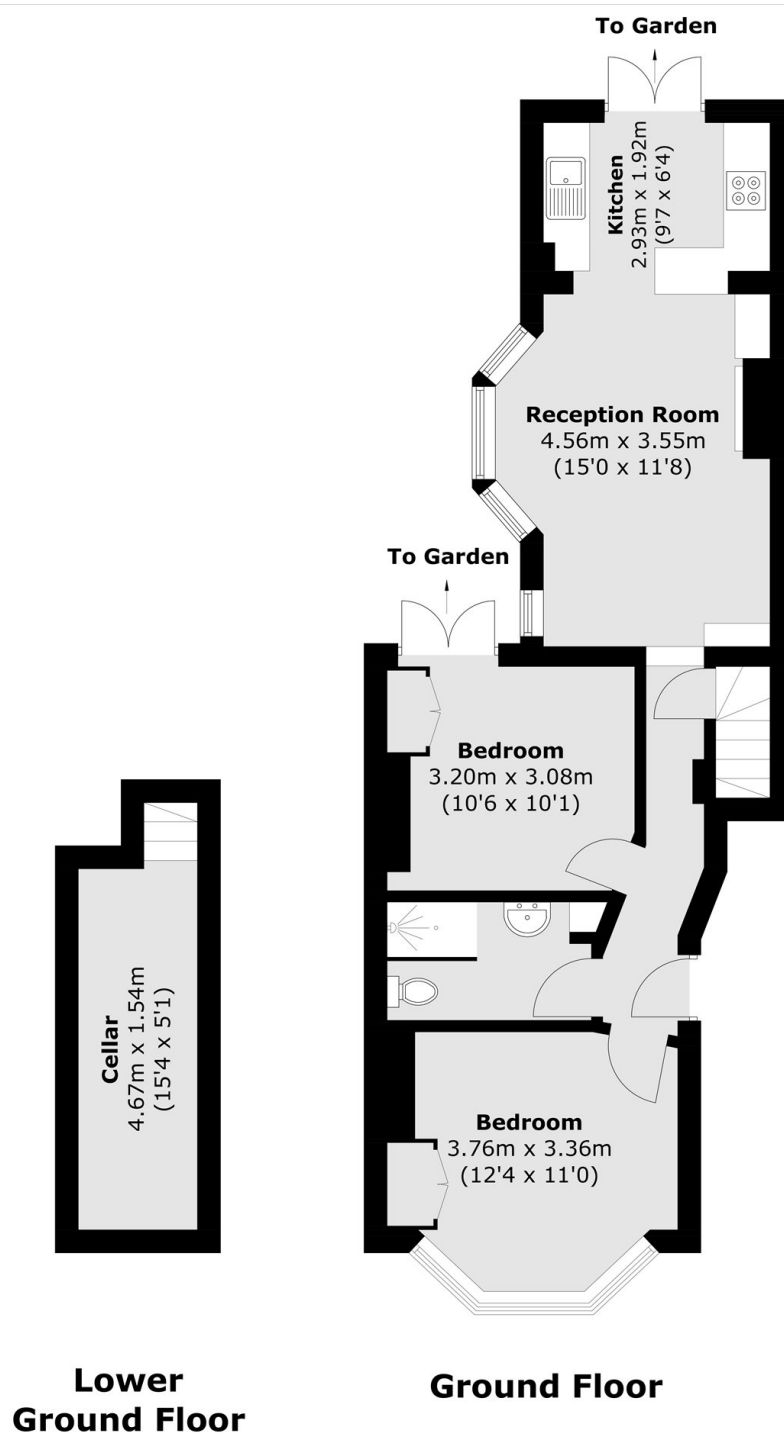
A spacious, ground floor period conversion ideally located on Garfield Road. Arranged to include an open plan reception room/kitchen which opens up to private and south facing garden. There are two double bedrooms, a family bathroom and cellar with large amounts of storage. The property benefits from extension potential into the side return (STPP) and is being sold chain free.

Garfield Road is a sought-after residential street just a short stroll from Clapham Common. You'll find an array of bars, restaurants and cafés nearby, with Clapham Old Town, Northcote Road and Lavender Hill all within easy reach. Transport links can be found at Clapham Common and Clapham Junction.

### Features

- Ground Floor Flat
- Open Plan Reception/Kitchen
- Two Bedrooms
- Cellar
- Secluded Garden
- Amazing Location

# Garfield Road, London, SW11



Total area (approx.): 61.7 sq. m (634.1 sq. ft)