

shepherds  
A better home  
moving experience



11 Mead Lane  
Hertford, SG13 7AG

Price Guide £375,000



## 11 Mead Lane

Hertford, SG13 7AG

Charming Two/Three-Bedroom End-Terrace Character Cottage – Mead Lane, Hertford

Situated on Mead Lane, just moments from Hertford East station and within easy walking distance of the town centre's shops, cafés and restaurants, this three-bedroom end-terrace character cottage offers flexible accommodation arranged over three levels, together with a private garden and garage.

Full of warmth and personality, the property blends period features with a welcoming atmosphere throughout. The sitting room is a particular highlight, featuring an attractive original fireplace with ornate detailing, wall panelling, and large sash-style window allowing for excellent natural light.

To lower ground floor, the kitchen/dining room provides a practical and characterful space with solid wood worktops, panelled cabinetry and room for a dining table — ideal for everyday living. A door leads directly out to the private rear garden.

The accommodation is arranged over three floors, offering versatility for modern lifestyles. The principal bedroom is generous and characterful, while the additional bedrooms provide flexible options for children, guests or home working. The family bathroom is fitted with a shower over bath.

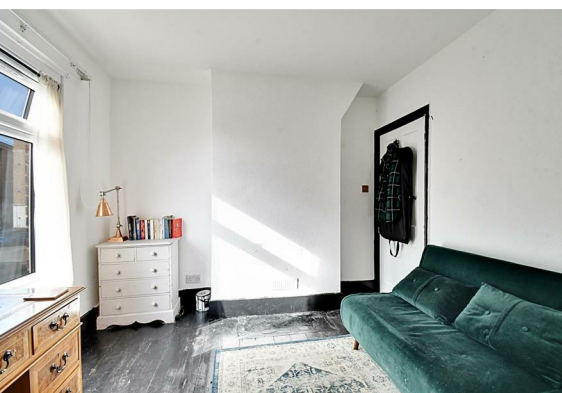
Externally, the rear garden offers a private space with lawn and mature planting, suitable for relaxing or al fresco dining. The property further benefits from a garage — a valuable feature so close to the station and town centre.

Offering charm, flexibility and exceptional convenience for commuters, this Hertford cottage presents an excellent opportunity to acquire a character home in a central and well-connected setting.

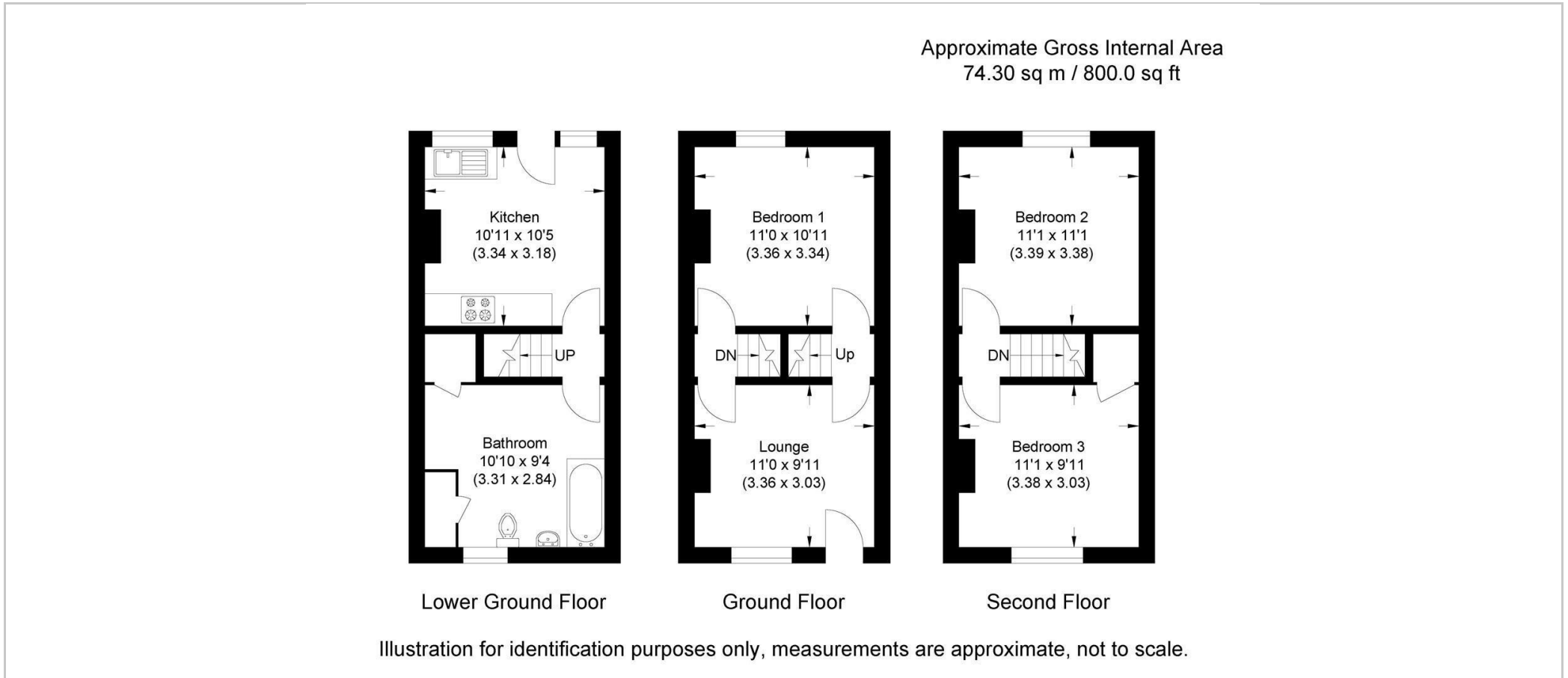




- Two/Three-bedroom end-terrace character cottage
- Accommodation arranged over three floors
- Flexible layout suitable for family living or home working
- Character features including original fireplace and wall panelling
- Kitchen/dining room with solid wood worktops
- Private rear garden with lawn and mature planting
- Garage providing valuable additional storage/parking
- Convenient location close to Hertford East station and town centre amenities



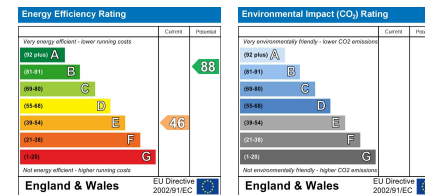
## Floor Plan



## Viewing

Please contact Shepherds of Hertford on 01992 551955 if you wish to arrange a viewing appointment for this property or require further information.

## Energy Performance Graph



These particulars, whilst believed to be accurate are set out as a general outline only for guidance and do not constitute any part of an offer or contract. Intending purchasers should not rely on them as statements of representation of fact, but must satisfy themselves by inspection or otherwise as to their accuracy. No person in this firm's employment has the authority to make or give any representation or warranty in respect of the property.

Riverside House, 6 Millbridge, Hertford, SG14 1PY  
Tel: 01992 551955 Email: enquiries@shepherdsfhertford.co.uk