



30 Christleton Avenue, Heaton Chapel, Stockport, SK4 5EQ

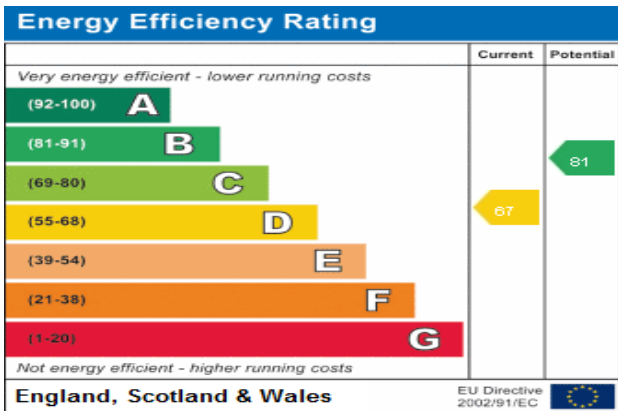
JohnMellor



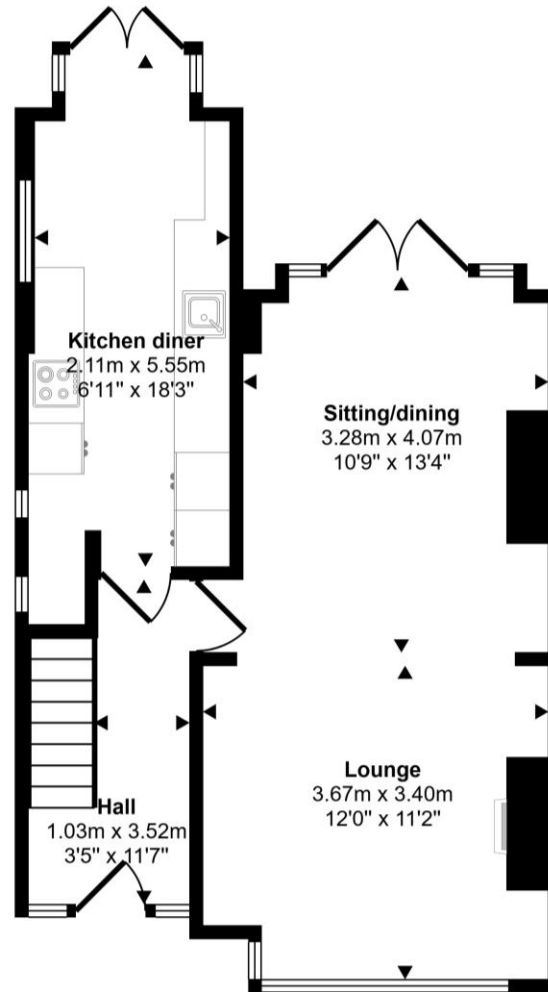
Simply stunning! A superb and most attractive three bedroom semi detached family home located on what is arguably Heaton Chapel's premier road and situated towards the top of the cul de sac with a south westerly rear aspect. The property has undergone an incredible transformation since our vendor bought in 2022 with improvements to include a complete kitchen refurbishment with new units, quartz worktops, new appliances and patio doors into the rear garden, a beautifully refitted bathroom (waterfall shower over bath), new combi gas boiler and the garden benefitted from a new raj green Indian stone patio and path.



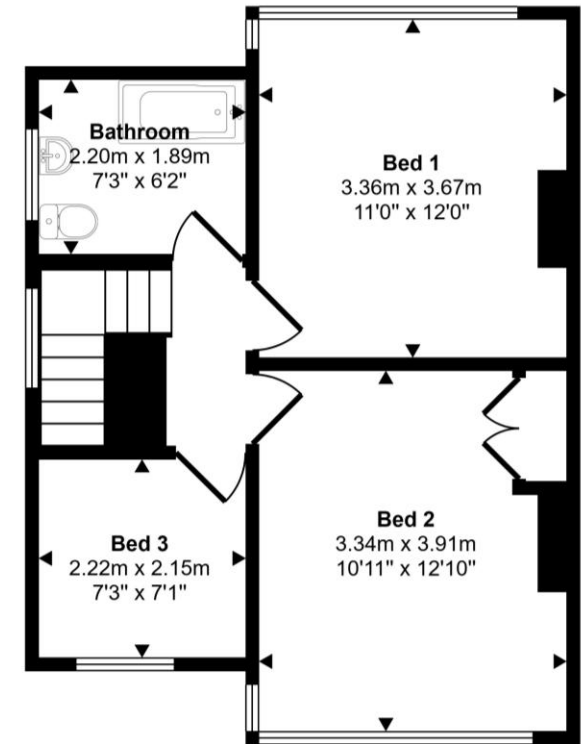
Naturally the property is double glazed and the loft has boarding, a light and pull down ladder. The driveway provides off road parking and the rear garden is an excellent size and affords a good degree of privacy. Christleton Avenue is convenient for local amenities in both The Heaton and Reddish catering for most of the everyday wants and needs. For commuters Heaton Chapel train station is just a 0.6 mile walk away and operates into both Stockport and Manchester centres. Leasehold for the remainder of a 995 year period from 1935 with a ground rent of £5.00 per annum. Council tax band C. A viewing is the only way to truly appreciate this wonderful home!



Approx Gross Internal Area
86 sq m / 922 sq ft



Ground Floor
Approx 45 sq m / 484 sq ft



First Floor
Approx 41 sq m / 438 sq ft

This floorplan is only for illustrative purposes and is not to scale. Measurements of rooms, doors, windows, and any items are approximate and no responsibility is taken for any error, omission or mis-statement. Icons of items such as bathroom suites are representations only and may not look like the real items. Made with Made Snappy 360.

JohnMellor

182 Heaton Moor Road, Heaton Moor,
Stockport, Cheshire, SK4 4DU
Tel: 0161 442 4142
sales@john-mellor.co.uk
www.john-mellor.co.uk

IMPORTANT! These particulars and floor plans are set out as a general outline only for the guidance of intending purchasers or lessees and do not constitute part of an offer or contract, nor may they be regarded as representations. All interested parties must themselves verify their accuracy. All measurements are approximate. The agents have not tested any apparatus, equipment, fixtures, fittings or services and so cannot verify that they are in working order, or fit for purpose. The buyer is advised to obtain verification from their solicitor or surveyor. J273