



## 16 Coppice Close, Cheslyn Hay, Walsall, WS6 7EZ

£1,475 Per Month

- Four bedroom semi-detached family home
- Re-fitted utility
- Located in Cheslyn Hay
- Re-fitted kitchen & Dining room
- Available now
- Viewing recommended

# 16 Coppice Close, Walsall WS6 7EZ

Nestled in the charming area of Coppice Close, Cheslyn Hay, Walsall, this delightful four-bedroom semi-detached family home offers a perfect blend of comfort and modern living. The property was built in 1963 and has been thoughtfully updated throughout.

Upon entering, you are welcomed into a spacious hallway, lounge that provides an inviting atmosphere for relaxation and entertaining. The heart of the home is undoubtedly the re-fitted kitchen, which boasts modern appliances and ample storage, making it a joy for any home cook. Adjacent to the kitchen, a convenient utility area adds to the practicality of the space, ensuring that daily chores are easily managed.

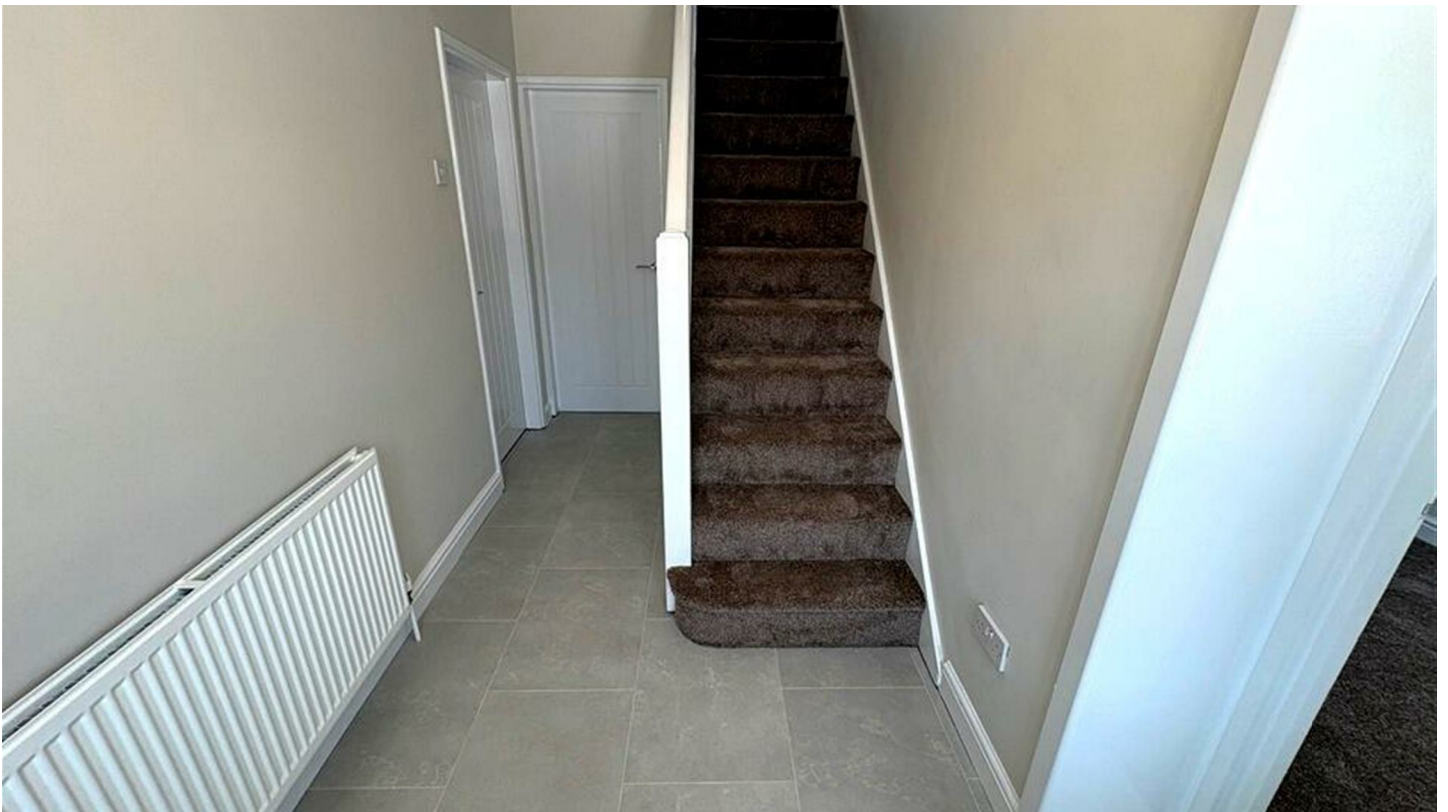
The property features four bedrooms, each offering a peaceful retreat for rest and relaxation. The layout is designed to accommodate family life, with plenty of room for everyone to enjoy their own space.

Outside, the semi-detached nature of the home provides a sense of privacy while still being part of a friendly community. The garden offers a lovely outdoor space for children to play or for hosting summer gatherings with friends and family.

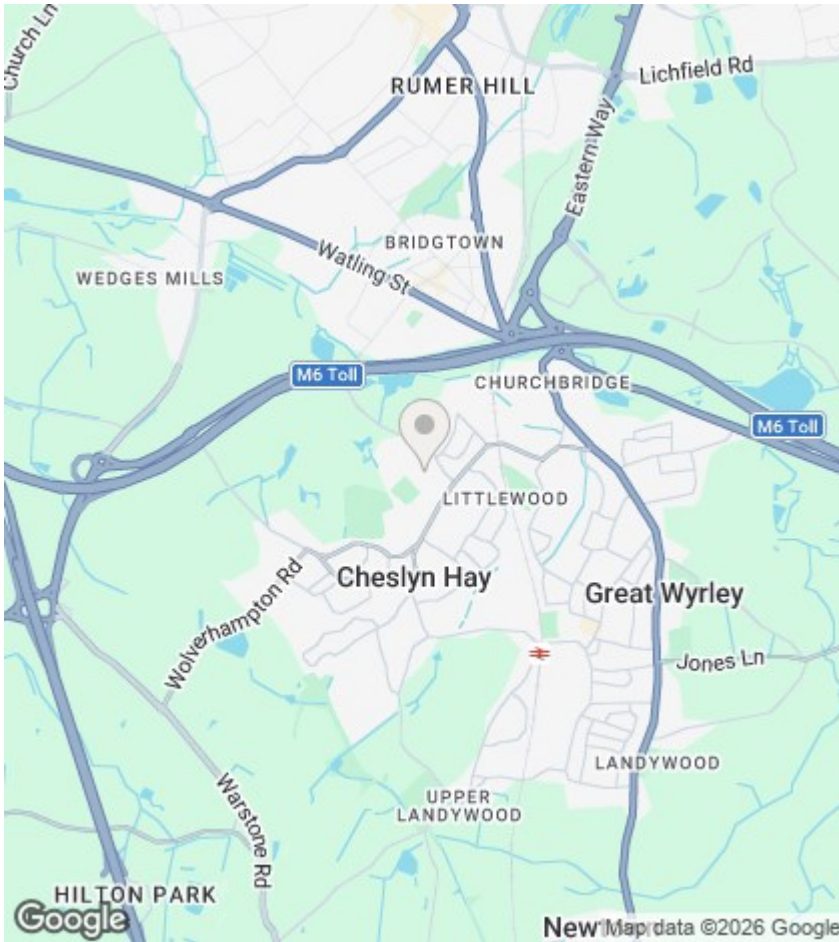
Available now, this property presents an excellent opportunity for those seeking a family home in a desirable location. With its modern updates and spacious layout, this house is ready to welcome its new owners.



Council Tax Band: B







## Directions

## Viewings

Viewings by arrangement only. Call 01543 686877 to make an appointment.

## EPC Rating:

D

Energy Efficiency Rating		Current	Potential
Very energy efficient - lower running costs			
(92 plus) A			
(81-91) B			
(69-80) C			
(55-68) D		56	
(39-54) E			
(21-38) F			
(1-20) G			
Not energy efficient - higher running costs			
<b>England &amp; Wales</b>		EU Directive 2002/91/EC	