



Connells
connells.co.uk 0121 525 1777
FOR SALE

65

63

Connells

Greets Green Road
West Bromwich



Property Description

This two bedroom property is situated within a quiet residential part of West Bromwich. With easy access to the town centre itself as well as the bus station and the tram stop West Bromwich Central. This makes any commute far or near, just that little bit easier on a day to day basis. The town centre offers an array of shops and amenities such as The New Square which is a relatively new shopping complex within the town, as well as all the well known and reliable smaller shops and convenient stores on the high street. The property itself briefly comprises of a family reception room, a fitted kitchen diner with a rear garden. This home offers a great opportunity for a first time purchase or your next buy to let investment. To the first floor you have three generously sized bedrooms with a ground floor family bathroom. To the rear of the property you have a low maintenance rear garden ideal for pots and plants with a detached garage with access via communal driveway.

CALL NOW TO ARRANGE YOUR VIEWINGS!

On Approach

Set back from the roadside, the property benefits from a small gated frontage, with access provided via an entrance porch.

Entrance Porch

Featuring a double glazed door and window to the front and door leading into the front reception room.

Reception Room

Double glazed window to the front, fire set in a feature surround, central heated radiator and door to the lounge.

Lounge

Double glazed window to the rear, stairs to the first floor, fire set in a feature surround and door to the kitchen.

Kitchen

Fitted wall and base units with work surfaces over, stainless steel sink and drainer, splash back tiling, central heated radiator, double glazed door and window to the side and door to the shower room.

Shower Room

Fitted shower cubicle, wash hand basin, WC, tiling to walls, central heated radiator and double glazed window to the side.

First Floor Landing

Stairs from the lounge and door to;

Bedroom One

Featuring a double glazed window to the front and a central heated radiator.

Bedroom Two

Featuring a double glazed window to the rear and a central heated radiator.

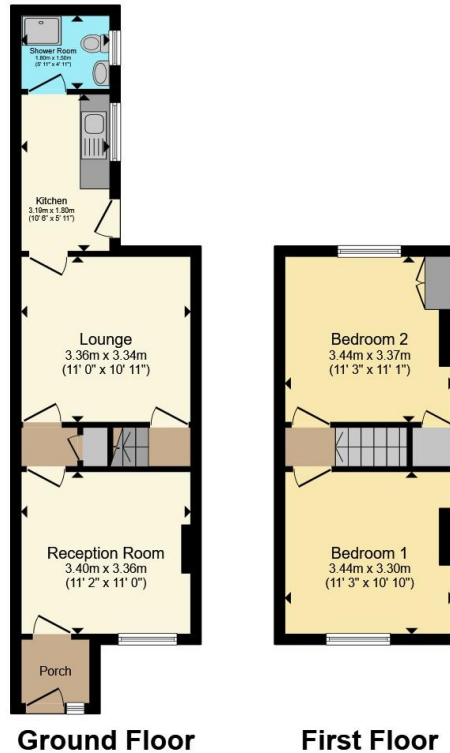
Rear Garden

Slabbed rear garden providing access to garage at the rear.









Total floor area 63.5 m² (684 sq.ft.) approx

This floor plan is for illustrative purposes only. It is not drawn to scale. Any measurements, floor areas (including any total floor area), openings and orientation are approximate. No details are guaranteed, they cannot be relied upon for any purpose and they do not form part of any agreement. No liability is taken for any error, omission or misstatement. A party must rely upon its own inspection(s). Powered by www.propertybox.io



To view this property please contact Connells on

T 0121 525 1177
E westbromwich@connells.co.uk

3 Astle Park
 WEST BROMWICH B70 8NS

EPC Rating: D Council Tax
 Band: A

Tenure: Freehold

view this property online connells.co.uk/Property/WBW311365



1. MONEY LAUNDERING REGULATIONS Intending purchasers will be asked to produce identification documentation at a later stage and we would ask for your co-operation in order that there will be no delay in agreeing the sale. 2. These particulars do not constitute part or all of an offer or contract. 3. The measurements indicated are supplied for guidance only and as such must be considered incorrect. Potential buyers are advised to recheck measurements before committing to any expense. 4. We have not tested any apparatus, equipment, fixtures, fittings or services and it is in the buyers interest to check the working condition of any appliances.

Connells Residential is registered in England and Wales under company number 1489613, Registered Office is Cumbria House, 16-20 Hockliffe Street, Leighton Buzzard, Bedfordshire, LU7 1GN. VAT Registration Number is 500 2481 05.

See all our properties at www.connells.co.uk | www.rightmove.co.uk | www.zoopla.co.uk

Property Ref: WBW311365 - 0002