



Snowberry House, Moor Lane, Youlgrave, DE45 1US

Snowberry House, Moor Lane Youlgrave, DE45 1US

Description

Nestled in the charming village of Youlgrave near Bakewell, this delightful house on Moor Lane offers a perfect blend of comfort and style. Upon entering through the solid wood front door, you are welcomed into a spacious entrance hall, complete with a cloakroom area and stairs leading to the first floor. The utility room, conveniently located off the hallway, is equipped with a range of units, worktops, and plumbing for a washing machine and dryer and provides a useful downstairs W.C.

The well-appointed kitchen, features attractive fitted units, a newly fitted induction hob with extractor, a double oven, and a fridge. The window above the sink provides a lovely view of the front garden. The kitchen flows seamlessly into the dining room, which offers ample space for a dining table and chairs, along with picturesque views of the garden. The decor throughout this property is simply beautiful, having been tastefully thought out by the current owners. Descending a few steps, you will find the inviting sitting room, complete with a living flame gas fire and French doors that open directly to the garden terrace, allowing for a perfect indoor-outdoor living experience.

On the first floor the landing leads to three well-proportioned bedrooms. The largest bedroom is a very generous double with dual aspect views, currently utilised as an additional reception/study/hobby space, and enjoys views of the surrounding countryside to front and back. Bedroom two is a further double room with stunning views to the south, ample fitted wardrobes and an attractive en-suite bathroom. Bedroom three accommodates a 'small double' bed, also with a lovely view, this time out to the front. The family bathroom is tastefully finished with a white suite, including a bath with a chrome shower over.

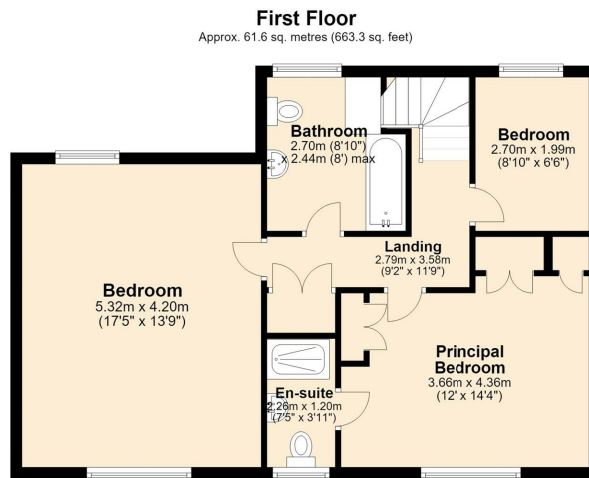
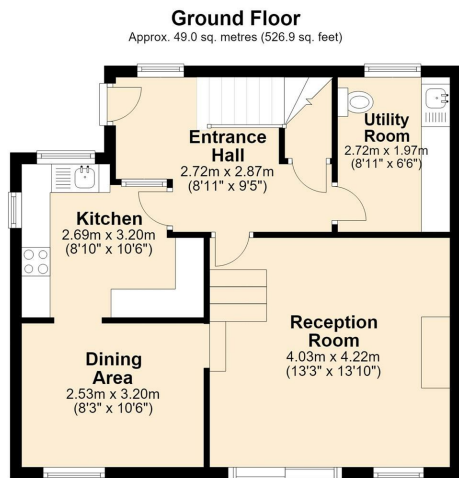
Outside, the property offers off-road parking for two vehicles and a car port, including an EV charging point. The south-facing garden is a true highlight, basking in sunlight throughout the day. It features a gently terraced layout with a patio terrace and vibrant floral borders. At the bottom of the garden is a purpose built, fully-insulated two room studio suite with electric underfloor heating and internet provision, perfect for either home working, a fitness studio or simply as a tranquil retreat. A secure store for bikes and tools completes the annexe, which blends into its surroundings with its attractive design and green roof.

This property is a wonderful opportunity for those seeking a peaceful yet vibrant lifestyle in the heart of the Peak District and offers so much more than meets the eye - do not miss out on the opportunity to appreciate the stunning countryside views in this idyllic setting.

- GUIDE PRICE £450,000 to £475,000
- Beautiful, stone faced, three bedroom property
- Desirable Youlgrave village location with impressive views to front and back in a peaceful backwater position
- Contemporary decor throughout with complementary period style features
- Delightful rear garden with purpose built garden studios
- Open plan living and dining areas opening on to sunny garden terrace







Total area: approx. 110.6 sq. metres (1190.2 sq. feet)



Bakewell
3 Royal Oak Place
Matlock Street
Bakewell DE45 1HD
T: 01629 700699
E: bakewell@elr.co.uk

Banner Cross
888 Ecclesall Road
Banner Cross
Sheffield S11 8TP
T: 01142 683388
E: bannercross@elr.co.uk

Dore
33 Townhead Road
Sheffield
S17 3GD
T: 0114 2362420
E: dore@elr.co.uk

Hathersage
Main Road, Hathersage
Hope Valley
Derbyshire S32 1BB
T: 01433 651888
E: peakdistrict@elr.co.uk

Rotherham
149 Bawtry Road
Wickersley
Rotherham S66 2BW
T: 01709 917676
E: wickersley@elr.co.uk

**EADON
LOCKWOOD
& RIDDLE**
ESTD 1840