

Exhibition Close, White
City, London, W12 7EF

Asking Price £750,000



Exhibition Close, White City, London, W12 7EF

Asking Price £750,000



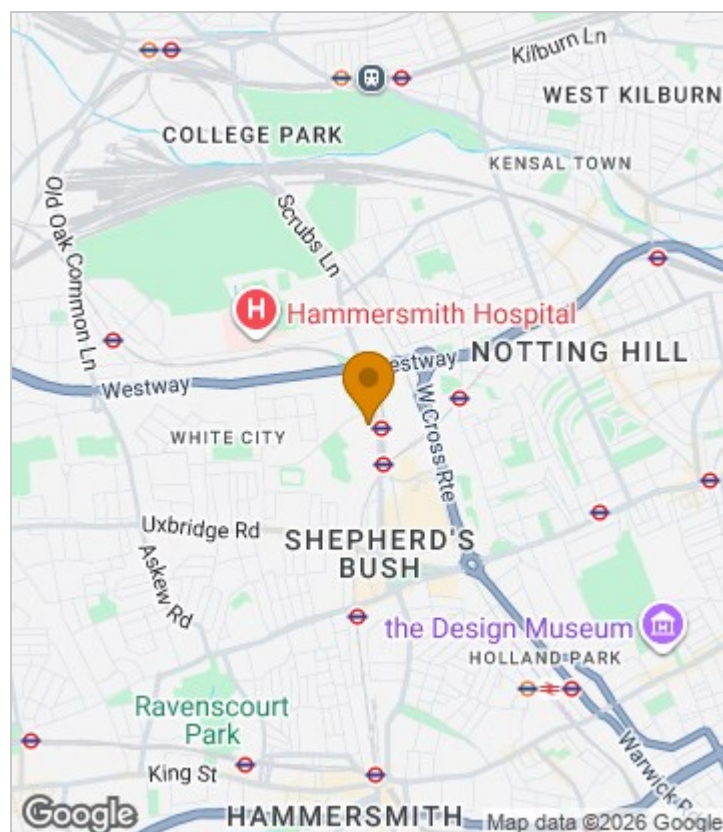
Summary Description

Exhibition Close, White City, W12. A centrally located three storey four bedroom townhouse only moments from all the amenities of Westfield White City. The property offers, four double bedrooms, two bathrooms, a spacious reception room and an open plan kitchen breakfast room. The property further benefits from a South facing private rear garden.

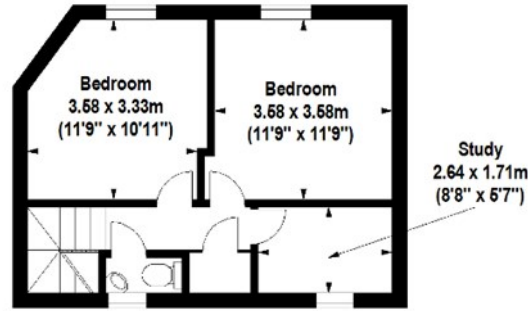
With White City Station (approximately 0.1 mile, Central line), Wood Lane (approximately 0.1 mile, Hammersmith & City and Circle lines) and Shepherds Bush (approximately 0.6 miles, Central line and Overground lines) stations on your doorstep. The location is served by excellent Underground stations (White City and Wood Lane (Central Line), Shepherds Bush (Overground)). There are also a number of excellent bus routes into the West End and the City.

Freehold, Hammersmith and Fulham Band E.

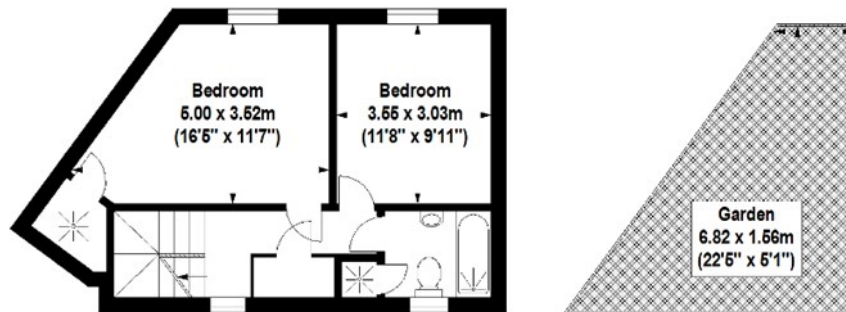
Area Map



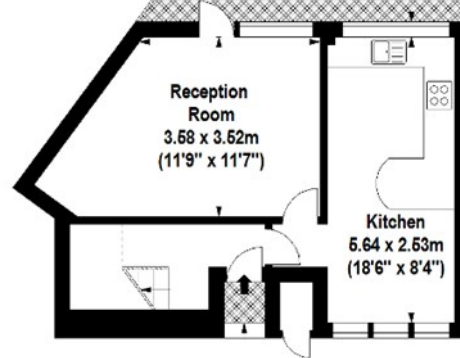
Floor Plan



Second Floor



First Floor



Ground Floor

For Identification Purposes Only. Not To Scale. © www.totalvista.uk 2018

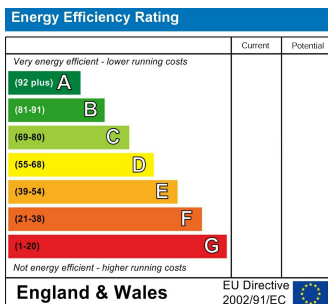


Exhibition Close, W12

Approx. Gross Internal Area
118.73 Sq M - 1278 Sq Ft



Energy Efficiency Graph



Viewing

Please contact our Sales SB Office on 0208 740 8740 if you wish to arrange a viewing appointment for this property or require further information.

- THREE STOREY TOWNHOUSE
- TWO BATHROOMS
- CHAIN FREE
- SHORT WALK TO WESTFIELD
- FOUR BEDROOMS
- PRIVATE SOUTH FACING GARDEN
- MOMENTS FROM WHITE CITY TUBE
- CENTRAL LOCATION WHITE CITY

For further information contact:

Sales SB, 234 Uxbridge Road, Shepherds Bush, London, W12 7JD

Tel: 0208 740 8740 Email: enquiries@jorgensenturner.com

<https://www.jorgensenturner.com/>

Disclaimer

These particulars, whilst believed to be accurate are set out as a general outline only for guidance and do not constitute any part of an offer or contract. Intending purchasers should not rely on them as statements of representation of fact, but must satisfy themselves by inspection or otherwise as to their accuracy. No person in this firm's employment has the authority to make or give any representation or warranty in respect of the property.