



Cheney Close
Gillingham | ME8 9PB

Cheney Close

Parkwood, Gillingham, ME8 9PB

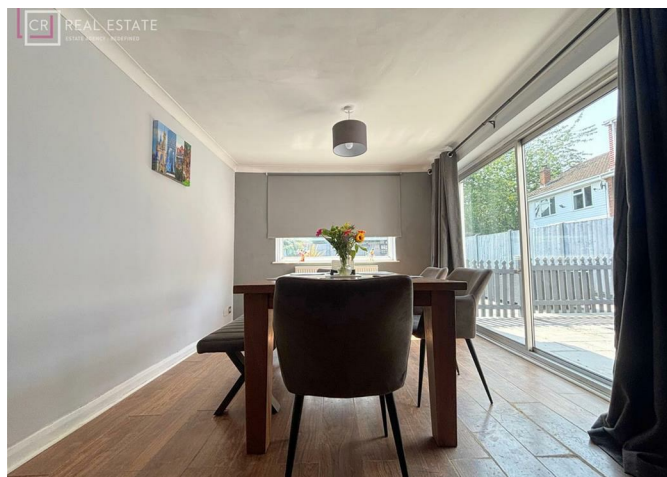
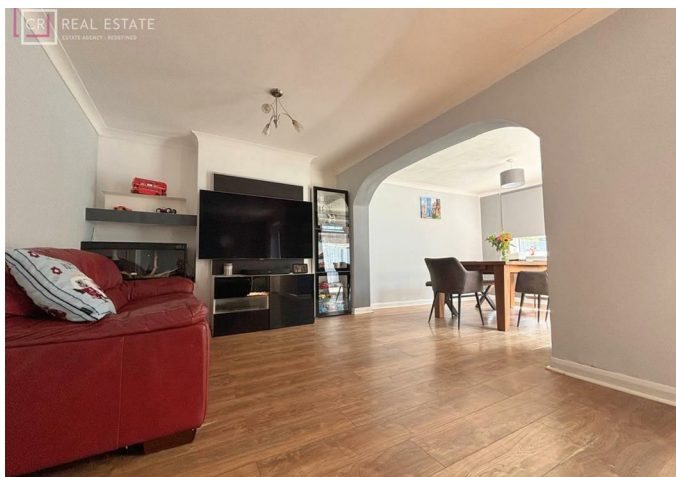
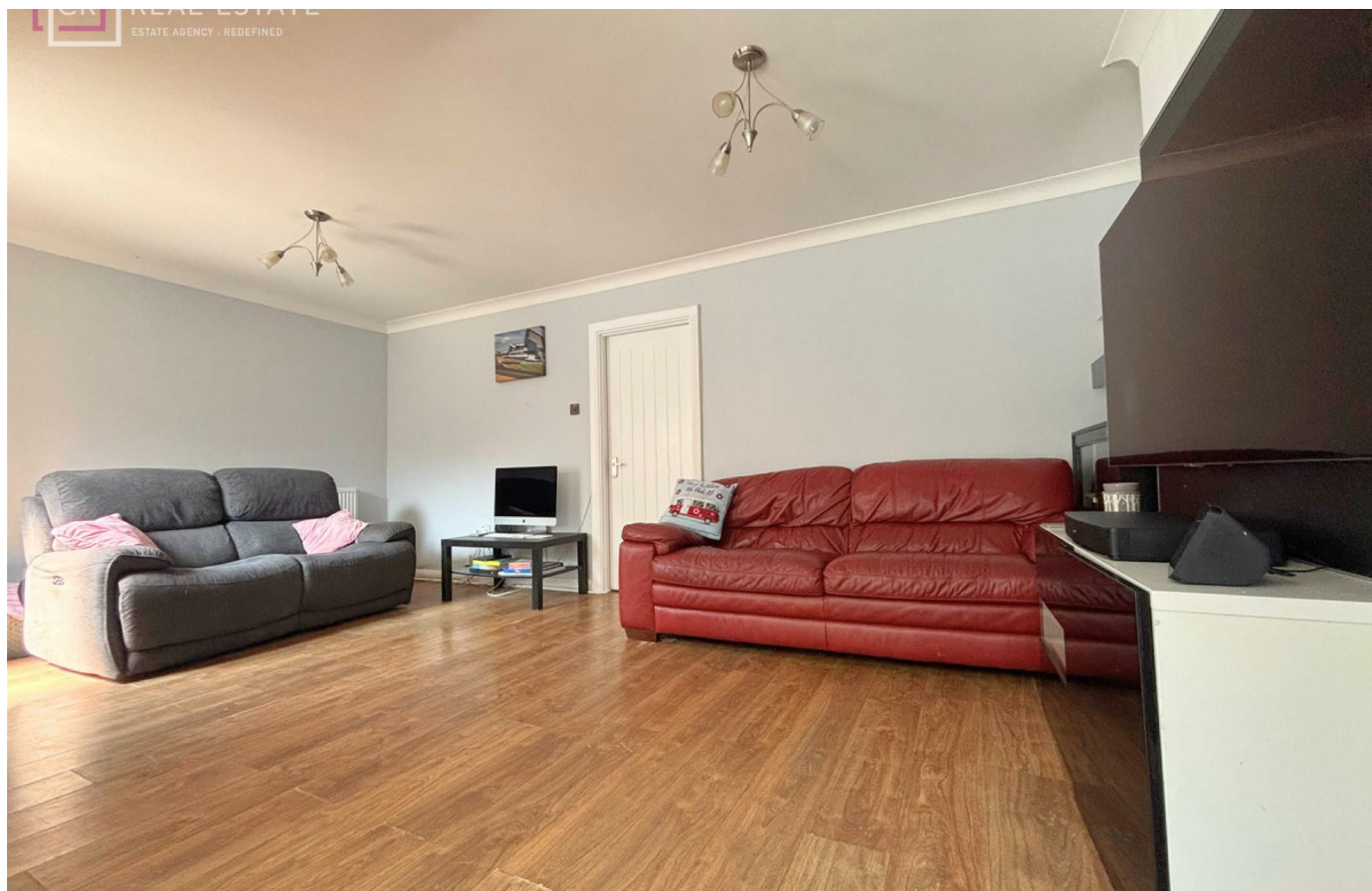
Nestled in a sought-after and peaceful cul-de-sac in Parkwood, near Rainham, this beautifully extended three double bedroom semi-detached home offers the perfect setting for family living.

The ground floor boasts a generous living area ideal for relaxing and entertaining, alongside a modern kitchen and convenient cloakroom/WC. Upstairs, you'll find three well-proportioned double bedrooms and a family bathroom, providing ample space for all.

Outside, enjoy a low-maintenance rear garden complete with a fantastic garden bar — perfect for summer gatherings. Additional benefits include off-street parking, a garage, and the convenience of local schools, shops, and transport links nearby.

A rare find in a popular location — early viewing is highly recommended

£345,000



Entrance Hall

Kitchen

9'6 x 7'5 (2.90m x 2.26m)

Cloakroom/WC

Living Room

19'1 x 10'4 (5.82m x 3.15m)

Dining Area

10'5 x 9'8 (3.18m x 2.95m)

Bedroom

14'8 x 11'0 (4.47m x 3.35m)

Bedroom

11'9 x 9'1 (3.58m x 2.77m)

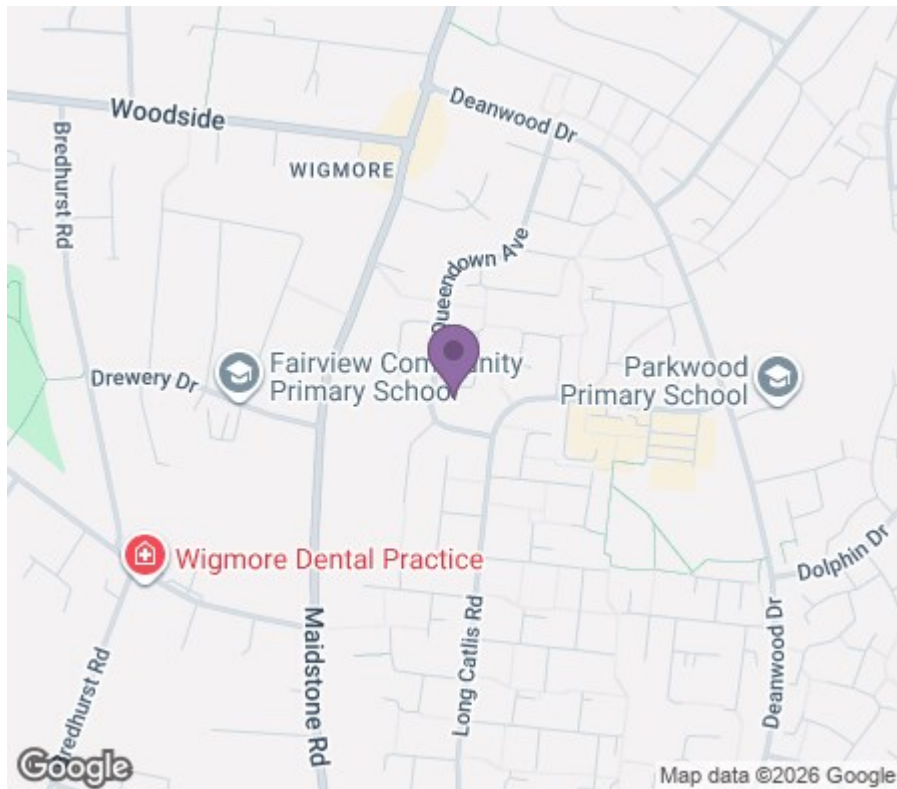
Bedroom

10'7 x 9'6 (3.23m x 2.90m)

Bathroom

9'8 x 7'6 (2.95m x 2.29m)

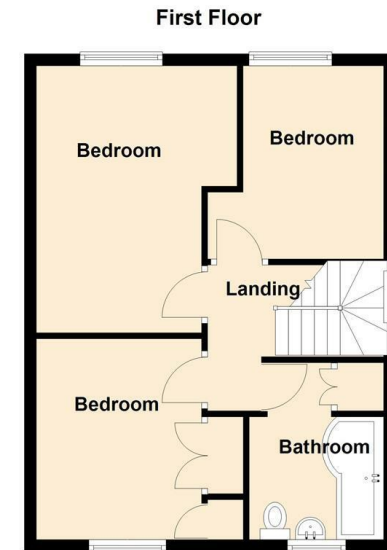




18 - 20 High Street
Gillingham
Kent
ME7 1BB

01634 570057

www.crralestate.co.uk
twitter.com/CRRealEstateUK
facebook.com/CRRealEstateUK



Energy Efficiency Rating		
	Current	Potential
Very energy efficient - lower running costs		
(92 plus) A		
(81-91) B		
(69-80) C		
(55-68) D		
(39-54) E		
(21-38) F		
(1-20) G		
Not energy efficient - higher running costs		
England & Wales		
	EU Directive 2002/91/EC	

Environmental Impact (CO ₂) Rating		
	Current	Potential
Very environmentally friendly - lower CO ₂ emissions		
(92 plus) A		
(81-91) B		
(69-80) C		
(55-68) D		
(39-54) E		
(21-38) F		
(1-20) G		
Not environmentally friendly - higher CO ₂ emissions		
England & Wales		
	EU Directive 2002/91/EC	

CR Real Estate endeavour to maintain accurate depictions of properties in Virtual Tours, Floor Plans and descriptions, however, these are intended only as a guide and purchasers must satisfy themselves by personal inspection.