



**McArthur
Stanton**

Letting & Estate Agents

Hove To

Gullybridge, Shandon, Helensburgh, Argyll And Bute. G84 8NN

Hove To

Gullybridge , Shandon, Helensburgh, Argyll And Bute. G84 8NN





Hove To
Gullybridge , Shandon, Helensburgh, Argyll And Bute. G84 8NN



Tucked away and enjoying a glorious loch side position "Hove To" is a beautifully maintained three-bedroom detached bungalow that sits within magnificent mature gardens and enjoys breath-taking views over the Gareloch.

Built in the mid 1970's "Hove To" has been occupied and owned by the current family since new. The property has been lovingly maintained and has had the advantage of a replaced roof, extensive grounds and as mentioned fabulous views over the Gareloch.

Internally the property is bright and airy and offers around 1,000 square feet of internal accommodation. On entering there is a welcoming vestibule and entrance hallway which has two useful store cupboards and a handy shower room. The lounge is a wonderful part of the property with floor to ceiling patio doors overlooking the garden and loch beyond. The lounge also has a lovely dining area with ample space for a good-sized table and chairs and views over a secluded patio to the rear of the property. The kitchen is fitted with traditional style units and has a range of integral appliances with lots of space for free-standing white-goods. The kitchen also has a courtesy door accessing outside.

"Hove To" has three spacious bedrooms one of which has built-in wardrobes. The main bathroom is fitted with an easy access bath, WC, sink and contrasting tiling. The property is double glazed and has gas central heating.

Externally "Hove To" sits within a magical setting which offers a high degree of privacy and outstanding views. The gardens are mainly laid to lawn with mature planting and there are various areas to sit and relax in the summer months including a large patio. There is a private driveway, carport and detached garage.

EPC Band C
Council Tax Band E



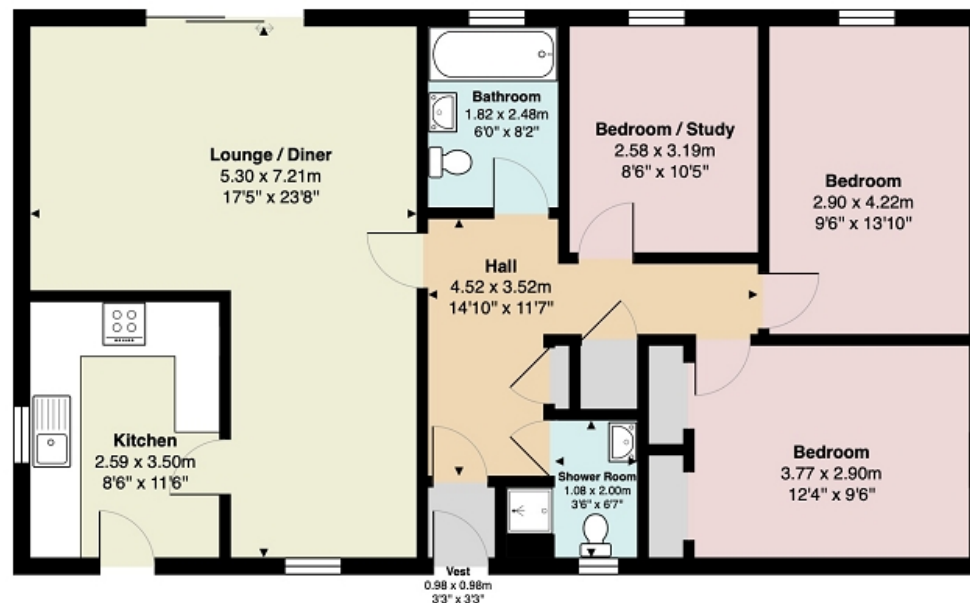
Hove To
Gullybridge , Shandon, Helensburgh, Argyll And Bute. G84 8NN





Measurements

Hallway	14' 10" Max x 11' 07" Max or 4.52m Max x 3.53m Max
Shower Room	6' 07" Max x 3' 06" Max or 2.01m Max x 1.07m Max
Lounge/diner	23' 08" Max x 17' 05" Max or 7.21m Max x 5.31m Max
Kitchen	11' 06" x 8' 06" or 3.51m x 2.59m
Bedroom 1	12' 04" x 9' 06" or 3.76m x 2.90m
Bedroom 2	13' 10" x 9' 06" or 4.22m x 2.90m
Bedroom 3/Study	33' 0" x 26' 5" or 10.05m x 8.06m
Bathroom	8' 02" x 6' 0" or 2.49m x 1.83m



All measurements are approximate and for display purposes only

Contact our office for further details



rightmove 
find your happy

NOTE: These details have been prepared for guidance. If there is any point which you find misleading please contact McArthur Stanton where further information is available. Measurements have been taken from wall to wall, unless otherwise stated, and have been recorded by use of a sonic beam. Services and appliances not tested. Details have been prepared by June 2026. If required, we can arrange for a property market appraisal to be carried out on your existing property.

Hove To

Gullybridge , Shandon, Helensburgh, Argyll And Bute. G84 8NN

