



OAKFIELD



High Street, Burwash, TN19 7EP

Price Guide £475,000



High Street, Burwash, TN19 7EP

PRICE GUIDE: £475,000 - £500,000

An exceptional and deceptively spacious four double-bedroom, two-bathroom end of terrace period home, ideally located on Burwash High Street in the heart of this highly sought-after village, within easy reach of charming cafés, local pubs, a village shop, and the historic church.

1 Ashdown House is a distinguished Grade II listed property set within one of the area's most desirable locations, surrounded by beautiful countryside. The accommodation is arranged over three floors and is complemented by a useful cellar.

The home has been carefully maintained over the years and combines modern improvements, including stylishly refitted bathroom suites, with a wealth of original period features throughout.

The property is entered via an inviting hallway, leading to a front-facing sitting room and a separate dining room. To the rear, there is an impressive kitchen/breakfast room, enhanced by a walk-in pantry and a convenient utility/cloakroom, creating a highly practical and functional space for everyday living.

Externally, the property enjoys a charming courtyard garden where there is a covered outdoor seating area with lighting, providing an ideal setting for relaxing or entertaining throughout the year.





Living Room

13'1" x 13'1" (3.99m x 3.99m)

Dining Room

13'3" x 11'5" (4.05m x 3.48m)

Kitchen

11'9" x 9'10" (3.58m x 3.00m)

WC

Bedroom

16'6" x 13'2" (5.03m x 4.01m)

Bedroom

11'5" x 10'7" (3.48m x 3.23m)

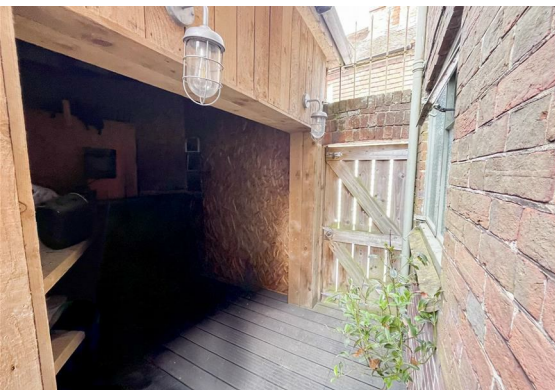
Bedroom

10'9" x 9'10" (3.28m x 3.00m)

Bathroom

Bedroom

19'10" x 16'7" (6.05m x 5.06m)



Shower Room

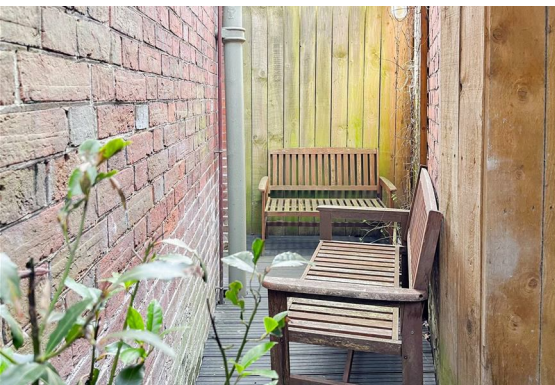
Cellar

17'1" x 12'2" (5.21m x 3.72m)

Covered Seating Area

11'3" x 7'10" (3.44m x 2.40m)

Council Tax Band D - £2,700.95 Per Annum



Floor Plan

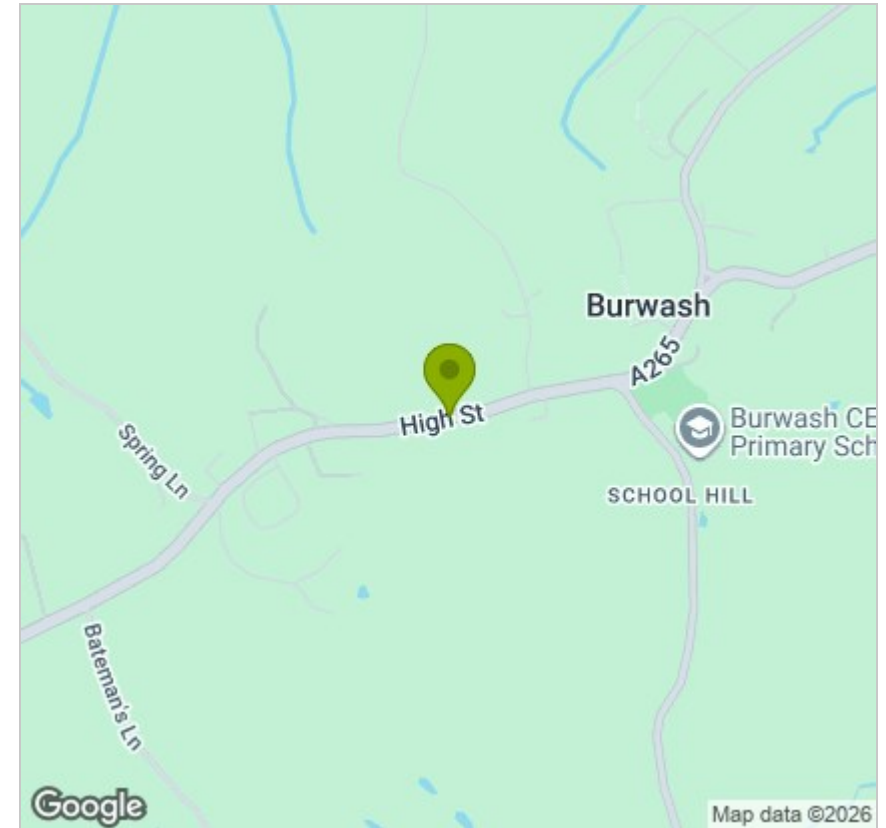


Viewing

Please contact us on 01435 864233 if you wish to arrange a viewing appointment for this property or require further information.

These particulars, whilst believed to be accurate are set out as a general outline only for guidance and do not constitute any part of an offer or contract. Intending purchasers should not rely on them as statements of representation of fact, but must satisfy themselves by inspection or otherwise as to their accuracy. No person in this firm's employment has the authority to make or give any representation or warranty in respect of the property.

Area Map



Energy Efficiency Graph

