



Shouldham Street, London, W1H
London

£1,900,000.

Tenure: Freehold

A rare opportunity to acquire a Grade II Listed freehold property arranged as three self-contained apartments, offering excellent investment, redevelopment, or owner-occupier potential.

The property is currently configured as a two-bedroom triplex apartment with a private roof terrace, a one-bedroom apartment on the ground floor, and a large studio garden flat with direct access to a west-facing garden. Subject to the necessary planning permissions (STPP), there is further potential to extend into the garden, enhancing the already versatile accommodation.

Situated on the highly sought-after Shouldham Street, renowned for its attractive Georgian terraces and prime central location, this unique property offers a wealth of possibilities. Early viewing is highly recommended to fully appreciate the character, flexibility, and future potential on offer.

Working in partnership with Simon Hedley Properties.

- Freehold
- Split in to three separate apartments
- Outside Space
- LGF One Bedroom Apartment with Garden
- Large Studio Apartment on Ground Floor
- Two Bedroom Triplex Apartment with Roof Terrace
- EPC - C



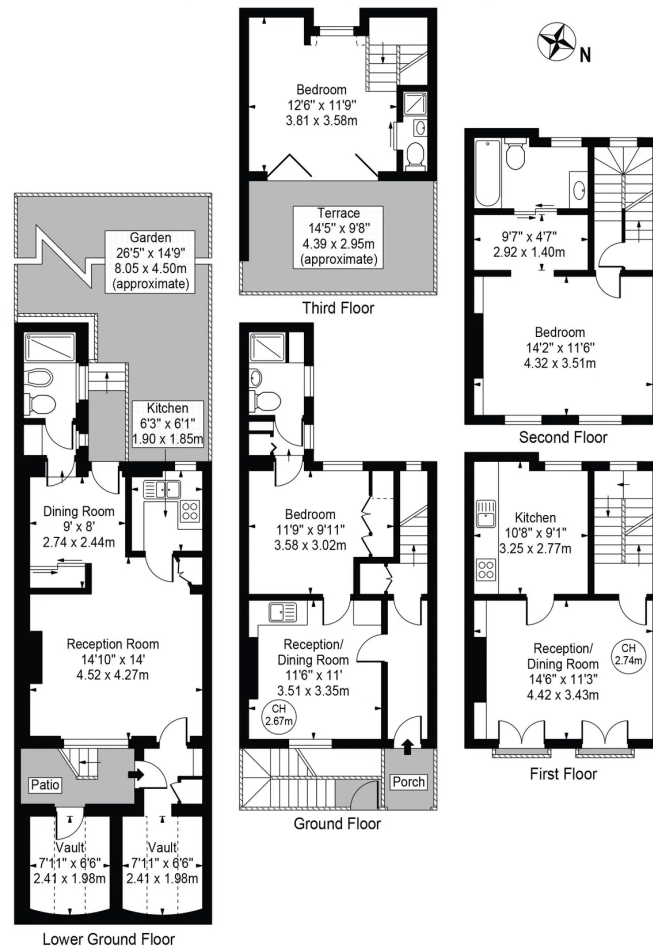


Shouldham Street

Approx. Total Internal Area 1657 Sq Ft - 153.94 Sq M
(Including Lower Ground Floor)

Approx. Gross Internal Area Of Lower Ground Floor 480 Sq Ft - 44.59 Sq M

Approx. Total External Area 521 Sq Ft - 48.40 Sq M
(Including Patio, Porch, Garden & Terrace)



For Illustration Purposes Only - Not To Scale

This floor plan should be used as a general outline for guidance only and does not constitute in whole or in part an offer or contract.
Any intending purchaser or lessee should satisfy themselves by inspection, searches, enquiries and full survey as to the correctness of each statement.
Any areas, measurements or distances quoted are approximate and should not be used to value a property or be the basis of any sale or let.