

Millharbour, E14

£484 Per week

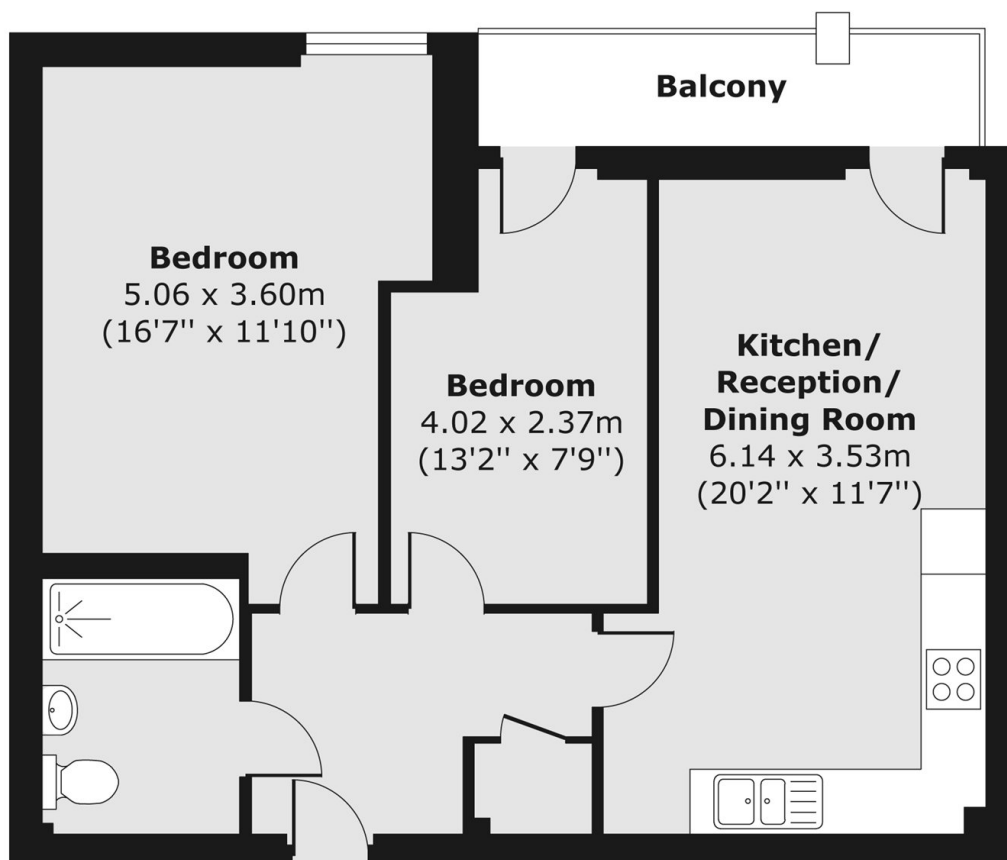
A spacious two bedroom apartment on the fourth floor of this dockside development. This recently refurbished apartment has an open-plan reception room, private balcony and ample storage.

Millharbour is moments away from the bars and restaurants of South Quay, including the popular Lotus Floating Restaurant.

Features

- Two Bedrooms
- One Bathroom
- Fourth Floor
- Ample Storage
- Private Balcony
- Open Plan

Millharbour, London, E14



Total area (approx.) 56.70 sq. m (610 sq. ft)
Balcony area (approx.) 4.81 sq. m (52 sq. ft)