

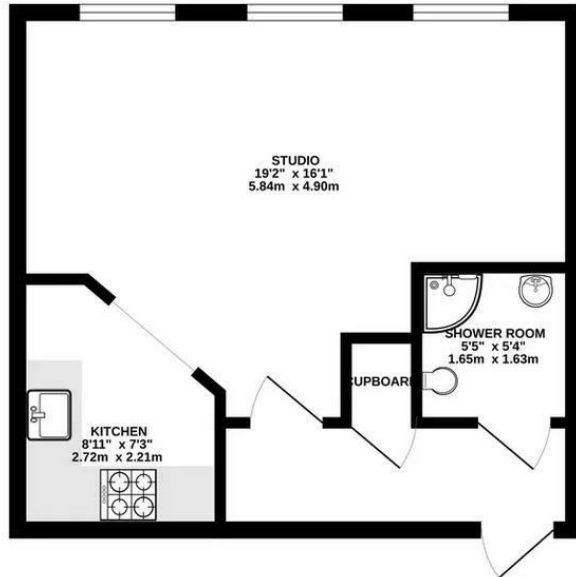


67 City House London Road, Croydon, CR0 2NS

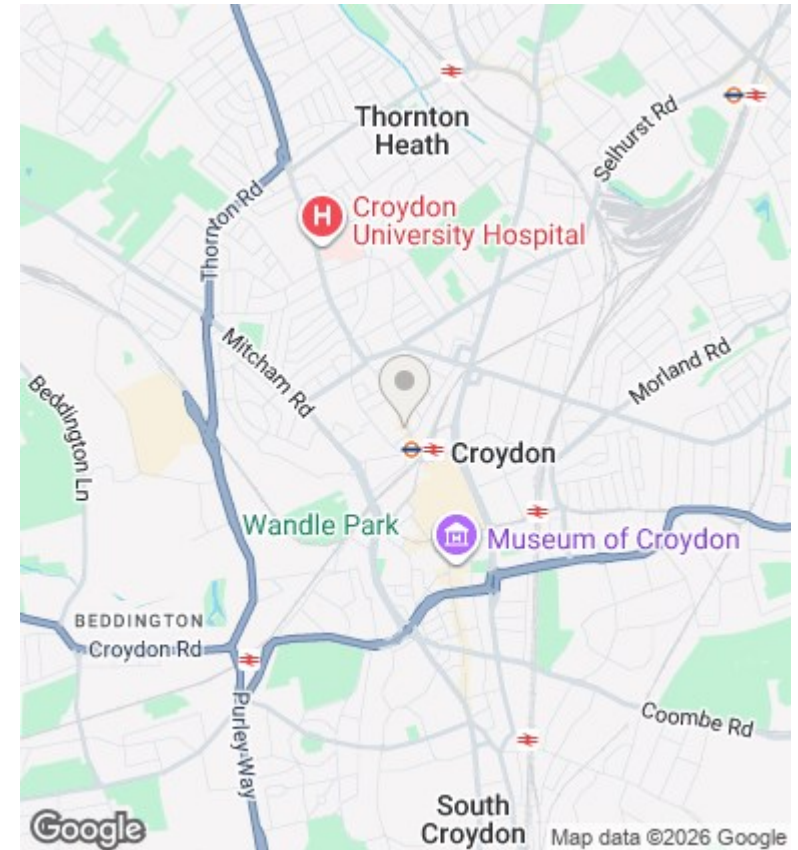
Asking Price £145,000

- Contemporary Spacious Studio
- Panoramic Views
- 5 Minute walk to Croydon Town Centre
- Communal Gardens
- Chain Free
- Easy Access to West Croydon Station
- Sought After Location
- Concierge
- Ideal For First Time Buyer

342 sq.ft. (31.8 sq.m.) approx.



TOTAL FLOOR AREA: 342 sq.ft. (31.8 sq.m.) approx.



Directions

Viewings

Viewings by arrangement only. Call 0208 681 8133 to make an appointment.

Council Tax Band

B

EPC Rating:

Energy Efficiency Rating		
	Current	Potential
<i>Very energy efficient - lower running costs</i>		
(92 plus) A		
(81-91) B		
(69-80) C		
(55-68) D		
(39-54) E		
(21-38) F		
(1-20) G		
<i>Not energy efficient - higher running costs</i>		
England & Wales	EU Directive 2002/91/EC	