




Billingham
exp

Sales. Lettings. Management

Rockmount Gardens, Brockleys Walk, Kinver, DY7 6JT

Offers In Region Of £435,000

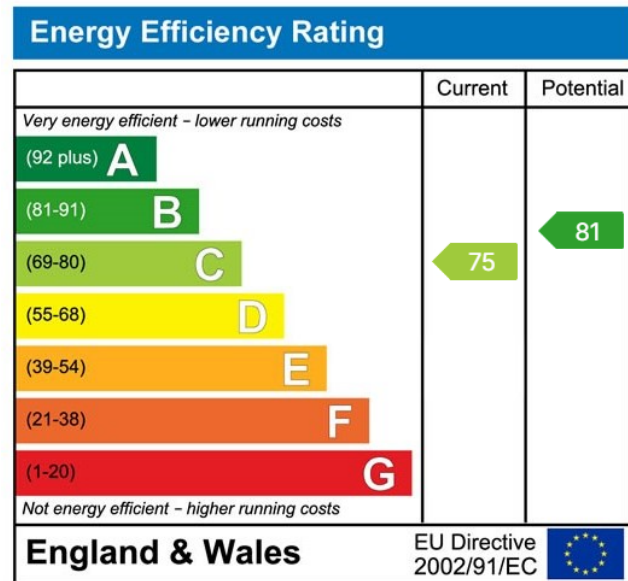
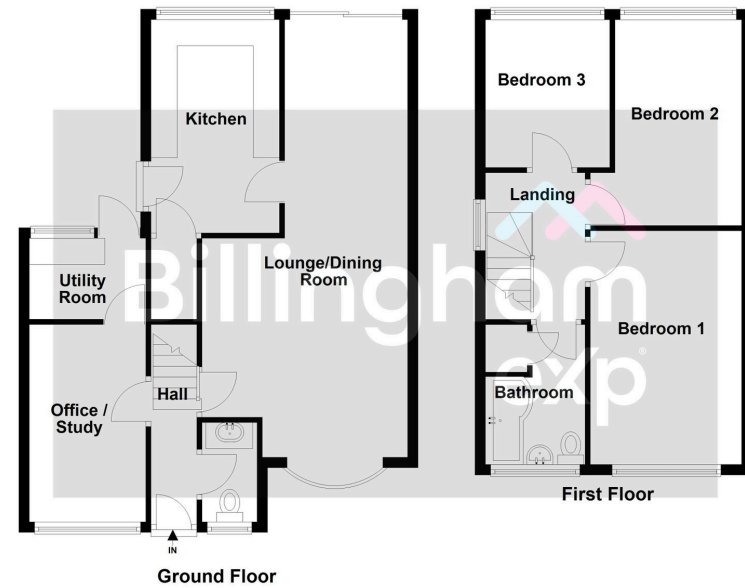
3 1 2

- Quiet sought after residential location just off Dark Lane.
- A few minutes walk into the Village.
- Stunning turn key ready family home.
- Living Room, Dining Area, Modern Kitchen.
- Sitting Room/Office, Utility Room, Downstairs Cloakroom.
- Three good size and well presented Bedrooms.
- Modern Family Bathroom.
- Beautiful rear gardens with scenic views.
- An early viewing is essential.
- EPC Rating C



TURN-KEY READY FAMILY HOME IN KINVER. This beautifully presented three-bedroom detached family home is nestled in a quiet, sought-after residential location just off Dark Lane, offering the convenience of being a few minutes' walk from the charming village of Kinver.





01384 444 004
www.billingham.properties

