



## Flora Gardens, W6

£425,000

Dexters are proud to present a two bedroom flat in the heart of Hammersmith by Ravenscourt Park.

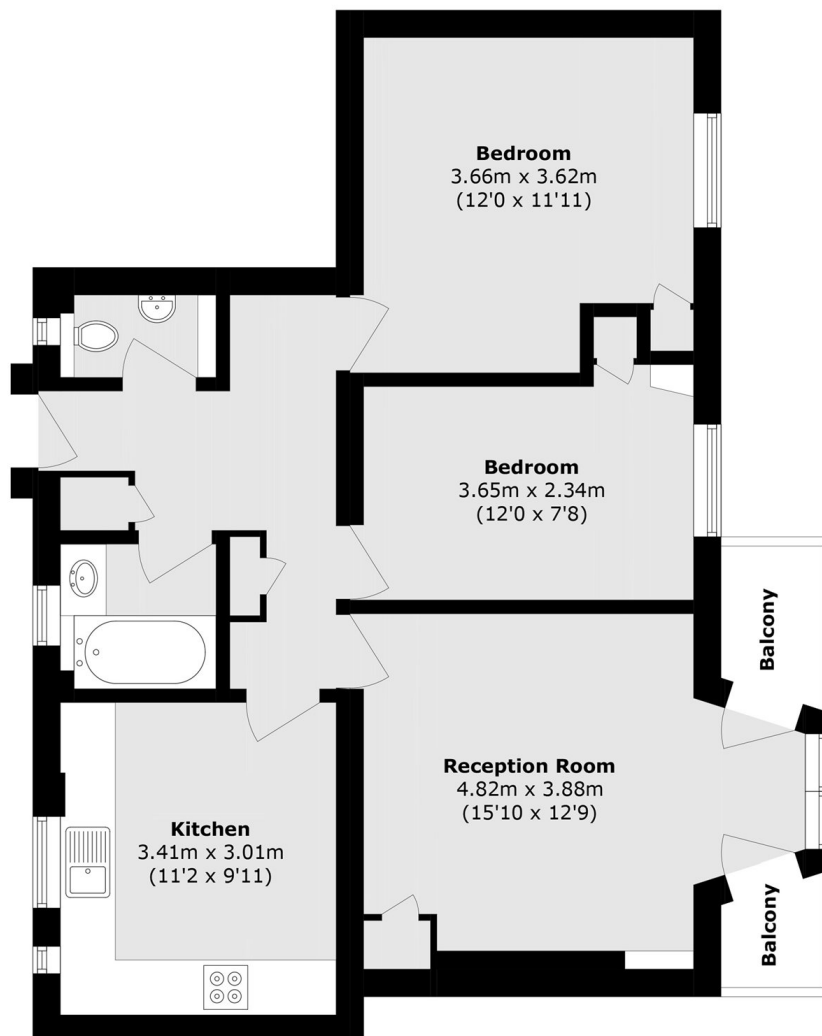
The flat has fantastic room proportions with two large bedrooms and a separate kitchen and reception room. The flat would make for a wonderful home or investment.

Flora Gardens lies between King Street, with its many shops and restaurants, and Brackenbury Village. Ravenscourt Park station is close by and also Ravenscourt Park is directly opposite. The River Thames with its great pubs and riverside walks is within easy reach.

### Features

- Two Bedrooms
- Separate Kitchen
- Lift
- Balcony
- Ravenscourt Park
- On Onward Chain

# Flora Gardens, London, W6



## Third Floor

Total area (approx.): 64.7 sq. m (696.4 sq. ft)

Balcony area (approx.): 2.8 sq. m (30.1 sq. ft)