

*Symonds
Taylor*

120 Biddlestone Road, Heaton

Newcastle Upon Tyne

Offers Over £180,000



120 Biddlestone Road

Heaton, Newcastle Upon Tyne

This beautifully presented end terraced ground floor Tyneside apartment is located in the heart of Heaton, close to Chillingham Road with 2 double bedrooms, a south facing courtyard that will appeal to first time buyers and where an internal inspection is essential.

Accommodation comprises:

Ground floor: Entrance vestibule, hallway, sitting room, kitchen, bathroom/wc, principal bedroom, bedroom 2.

Outside: Front town garden, rear south facing courtyard.

Council Tax band: A

Tenure: Leasehold

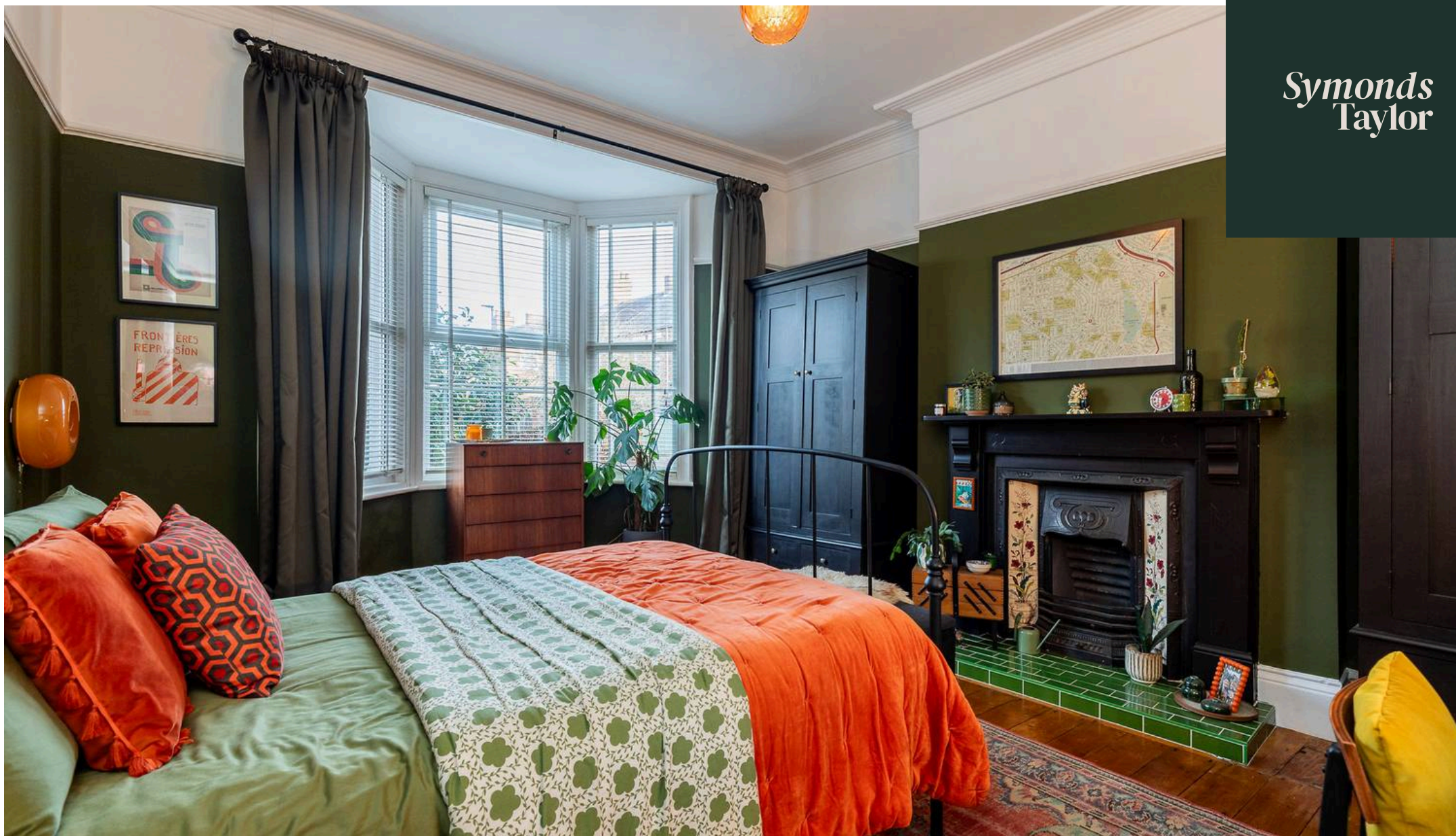




120 BIDDLESTONE ROAD, HEATON, NE6 5SN

APPROXIMATE GROSS INTERNAL AREA 67 SQ M 717 SQ FT - NOT TO SCALE - FOR ILLUSTRATIVE PURPOSES ONLY
All measurements and fixtures including doors and windows are approximate and should be independently verified.

*Symonds
Taylor*



Symonds Taylor

101 St. Georges Terrace, Jesmond – NE2 2DN

0191 338 9999 • hello@symondstaylor.co.uk • www.symondstaylor.co.uk

All descriptions, plans or references to condition are given in good faith only.

Whilst every endeavour is made to ensure accuracy, please check with us on any points of especial importance to you.