



LMS PROPERTY GROUP
FOR SALE
01869 248 339



16 Murcott Road, Upper Arcott

Bicester

Guide Price **£350,000**



16 Murcott Road

Upper Arncliffe, Birster

IMS are proud to present this three-bedroom semi-detached home. Ideally situated in the highly desirable village of Upper Arncliffe, a location known for its peaceful surroundings and strong sense of community.

Occupying a generous plot, the property offers a wonderful balance of indoor and outdoor living, featuring a private, well proportioned garden and a garage positioned to the rear. The tranquil setting makes it an excellent choice for families seeking both comfort and calm, while remaining well connected.

The ground floor has been thoughtfully designed with modern lifestyles in mind. At its heart lies an open plan modern kitchen and dining space, perfect for both everyday living and entertaining. Flooded with natural light from expansive windows, this inviting area enjoys uninterrupted views of the garden, creating a seamless connection between inside and out. Stylish tiled flooring flows throughout, enhancing both practicality and visual appeal.



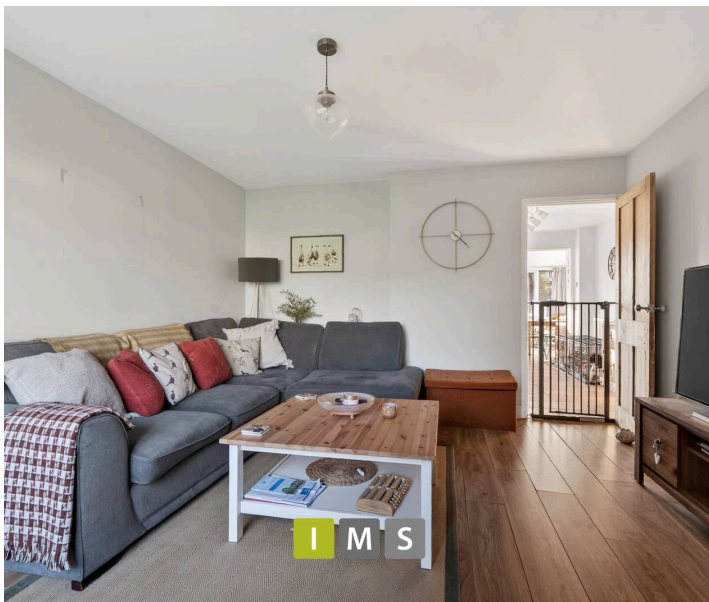


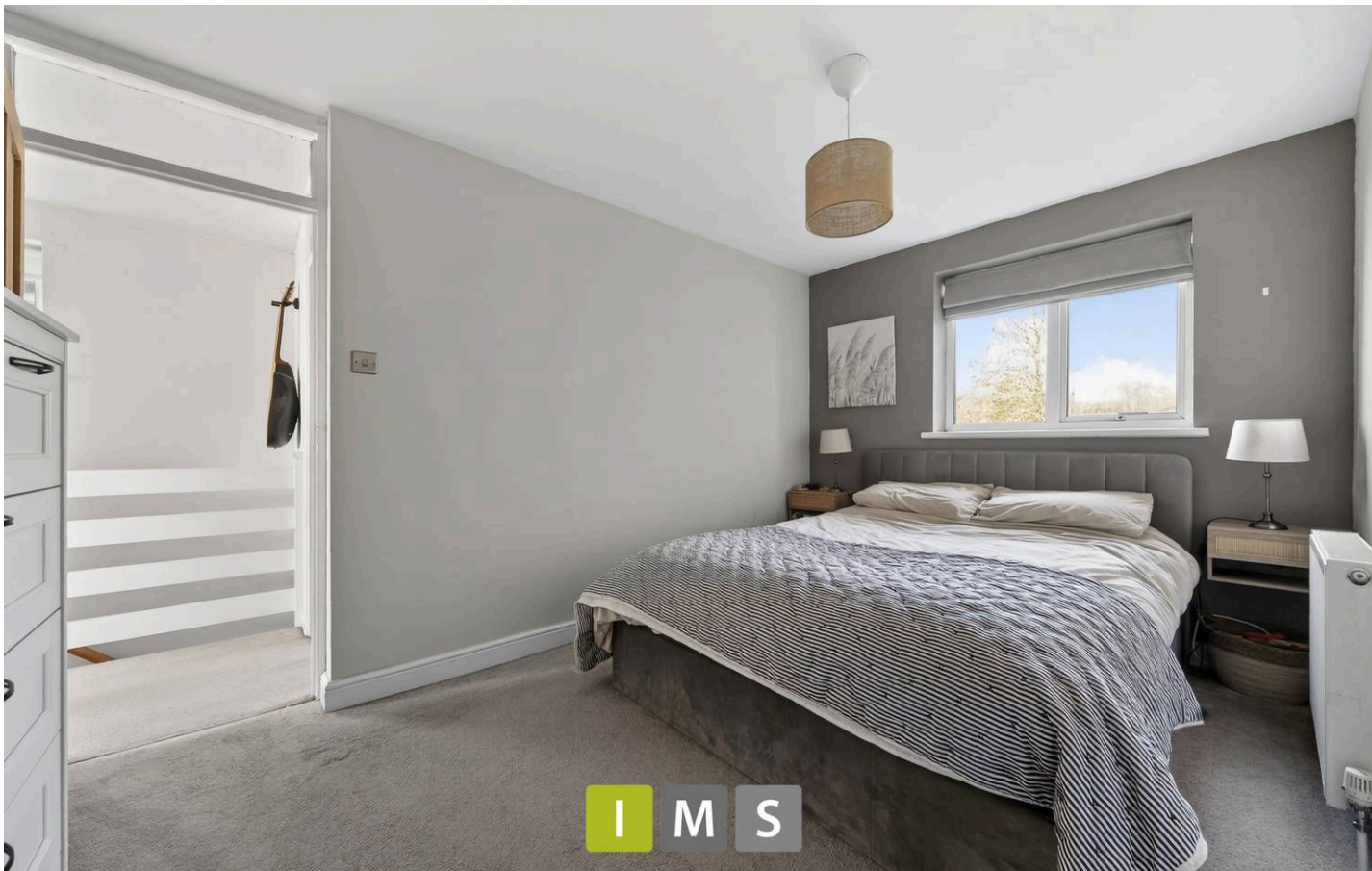
16 Murcott Road

Upper Arcott, Bicester

The living room is equally impressive in scale, offering a warm yet contemporary feel. Finished in neutral tones and complemented by sleek laminate flooring, the space is bathed in natural light from large windows. Creating an airy and welcoming atmosphere, ideal for relaxing or hosting guests.

The first floor continues to impress with three well proportioned bedrooms. Two generous doubles, whilst the third room offers flexibility as a nursery, home office, or guest bedroom. The family bathroom is fully tiled and fitted with a bath and overhead shower, WC, and pedestal basin, delivering both style and practicality. A well placed window on the landing ensures the first floor remains bright and uplifting throughout the day.





16 Murcott Road

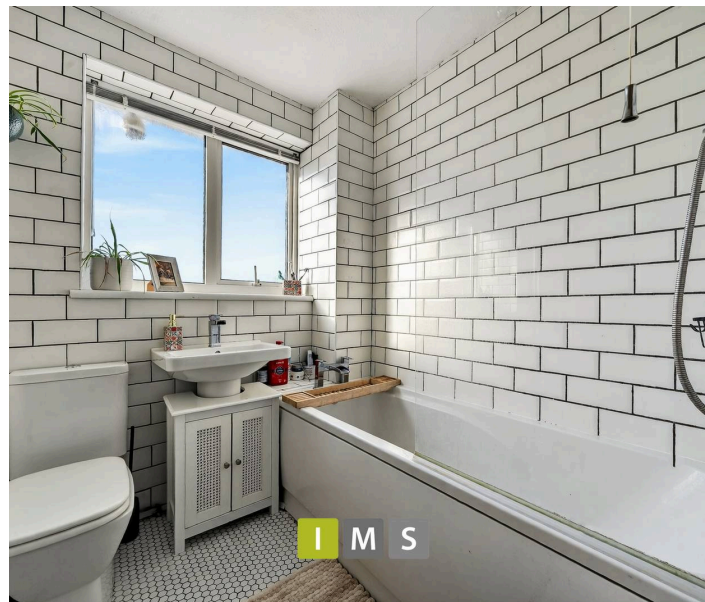
Upper Arncott, Bicester

French doors from the kitchen/dining area open directly onto the private garden. Ideal for simply unwinding in a peaceful outdoor space.

Blending space, light, and a sought after location, this is a home that truly delivers on both lifestyle and convenience. Perfect for growing families or those looking to settle into a welcoming community.

- Key Information

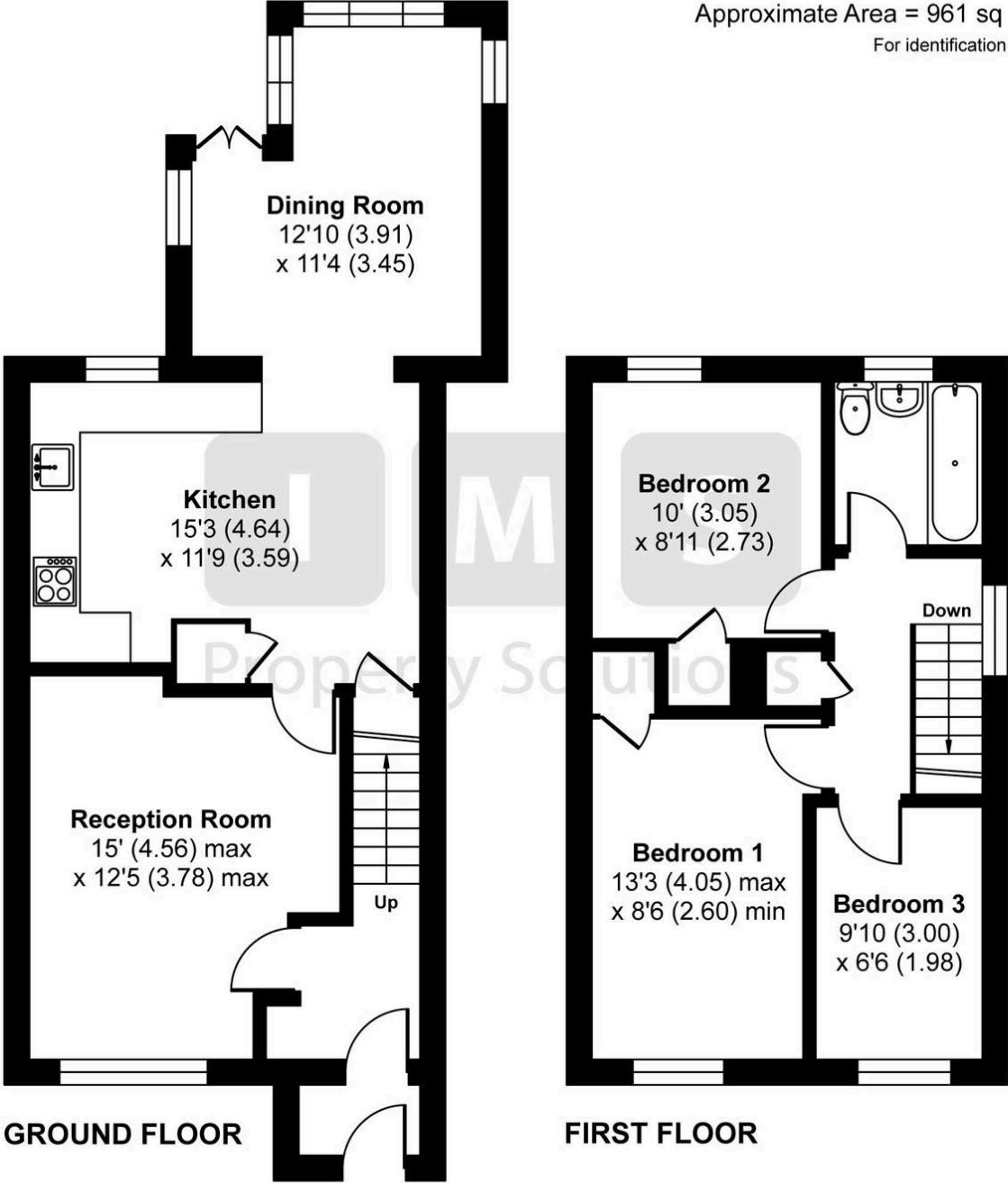
- Price £350,000
- Service charge £
- Council Tax Band B
- EPC C
- Utilities: Mains gas, water and drainage
- Parking: Garage
- Construction: Brick
- Estimated broadband speeds: Standard 11mbps / Superfast 74 mbps
- Mobile signal: check <https://checker.ofcom.org.uk/en-gb/mobile-coverage>
- Flood risk: Surface water Very low



Murcott Road, Bicester, OX25

Approximate Area = 961 sq ft / 89.3 sq m

For identification only - Not to scale



GROUND FLOOR

FIRST FLOOR



IMS Property Group

IMS Property Group, 18 Kings End - OX26 2AA

01869 248339

sales@imspropertygroup.co.uk

imspropertygroup.co.uk