



Taylor Close, CM20 2NW  
Harlow





# Taylor Close, CM20 2NW

\*\* AVAILABLE NOW \*\*

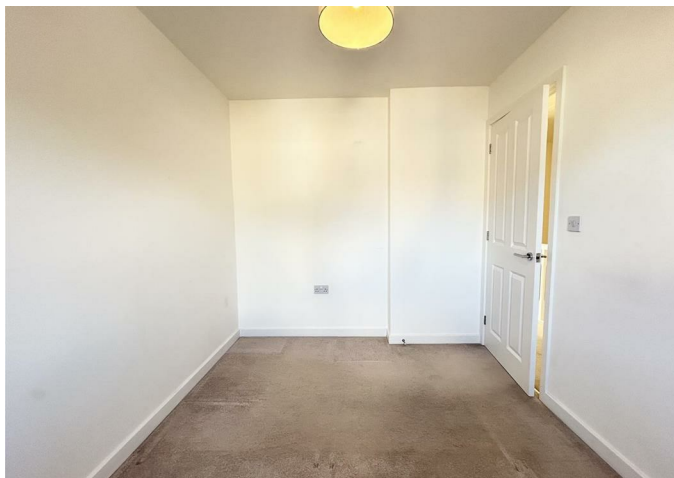
Two bedroom house with ensuite located in the new build development of Ram Gorse Park - just moments from Harlow Town Railway Station along with a short distance from Princess Alexandra Hospital & Harlow Town shopping centre!

Boasting spacious lounge/diner which leads out on to the private garden with separate contemporary kitchen and downstairs WC! The first floor offers two excellent size double bedrooms with an en suite to master bedroom.

Property comes with 2 allocated parking spaces.

Enquire today to book into our open day on Tuesday 31st March!

**£1,595 Per Month**



- **AVAILABLE NOW**
- **Open day Tuesday 31st March**
- **Council tax band C**
- **Ensuite**
- **Seconds from Harlow Town Railway Station**

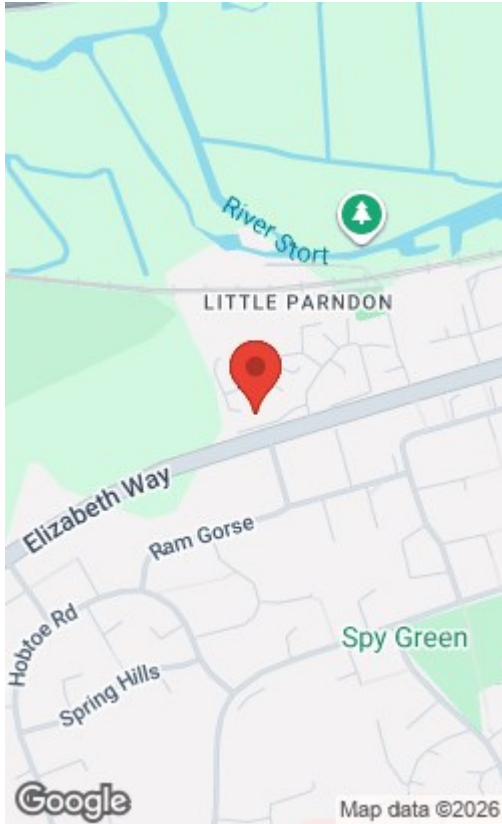
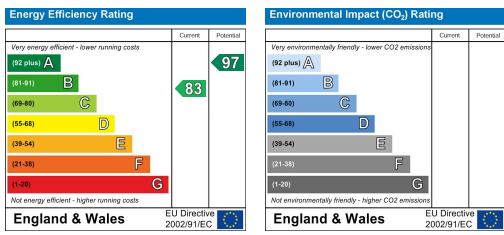
- **New build development**
- **EPC Rating B**
- **Desirable location**
- **Downstairs WC**
- **Short distance to PAH**











THE PROPERTY MISDESCRIPTIONS ACT 1991. The agent has not tested any apparatus, equipment, fixtures or services and so cannot verify that they are in working order, or fit for the purpose. References to the Tenure of a property are based on information supplied by the vendor. The agent has not had sight of the Title documents. A buyer is advised to obtain verification from their Solicitor or Surveyor. Note: These details are correct at time of going to press.



Unit 4 Church Langley Way, Harlow,  
Essex, CM17 9TE  
T: 01279 450400  
E:  
www.kings-group.net

