



Hawker Drive, Addlestone, KT15 2FP





Grants Homes are delighted to present this beautifully maintained, modern four-bedroom, three-bathroom freehold home, complete with views out over horse paddocks to the rear of the property, a part-converted garage, private driveway, and a low-maintenance rear garden.

Designed for versatile contemporary living and arranged over three spacious floors, the ground floor features a bright and airy kitchen/dining room, flooded with natural light. The space is fitted with contemporary wall and base units, integrated appliances and a central island, perfect for both everyday living and entertaining. This level also benefits from a convenient downstairs cloakroom and the garage which has been replastered and flooring installed allowing the space to be used as a gym, storage room or potential additional living space.



The first floor hosts a generous front-aspect living room, enhanced by large windows and double doors opening onto an attractive balcony—an ideal spot to relax. Also on this floor is a well-proportioned double bedroom with fitted storage, a stylish en-suite shower room, and a charming Juliet balcony.



On the second floor, you'll find a spacious principal bedroom with a contemporary en-suite shower room, alongside two further bedrooms and a modern family bathroom, all thoughtfully arranged to suit family living.

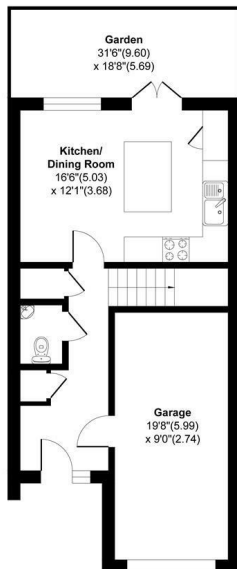
Externally, the property boasts a good-sized rear garden designed for

Freehold

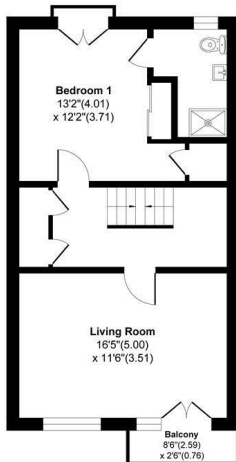
Hawker Drive, Addlestone, KT15

Approximate Area = 1557 sq ft / 144.6 sq m

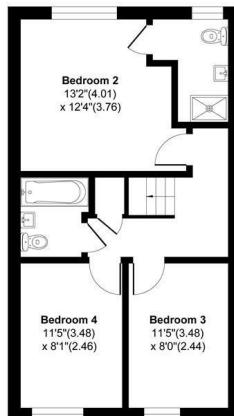
For Identification Only - Not to scale



Ground Floor



First Floor



Second Floor

Floor plan Produced in accordance with RICS Property Measurement 2nd Edition, Incorporating International Property Measurement Standards (IPMS2 Residential). Produced for Grants Homes Agents.



EPC Rating: 85 B





Grants Homes 60 Church Street, Weybridge, Surrey, KT13 8DL
T: 01932 858885 E: addestone@grantshomes.co.uk

