



*15 Pauntley Road, Christchurch BH23 3JH*

*£500,000*

**Mitchells**

1963 — TODAY



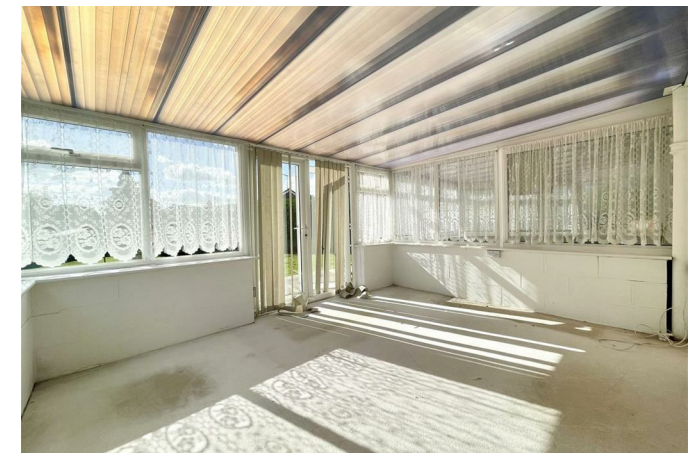
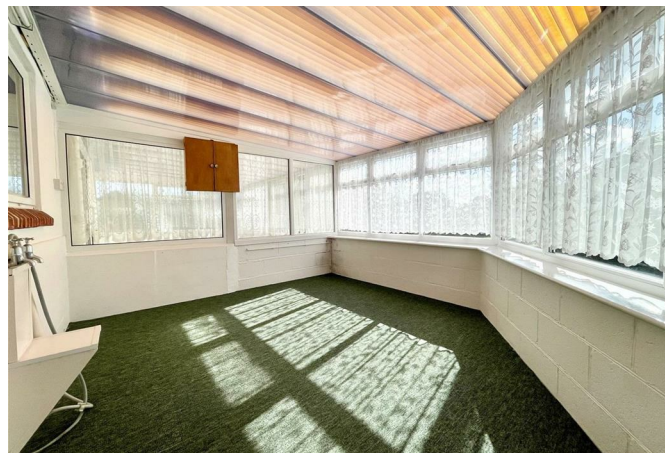
# *Pauntley Road, Christchurch*

A spacious detached bungalow of 1060 sqft offering huge scope and potential, featuring generous room sizes, a large south facing rear garden, ample off-road parking and a single garage.



## The Property

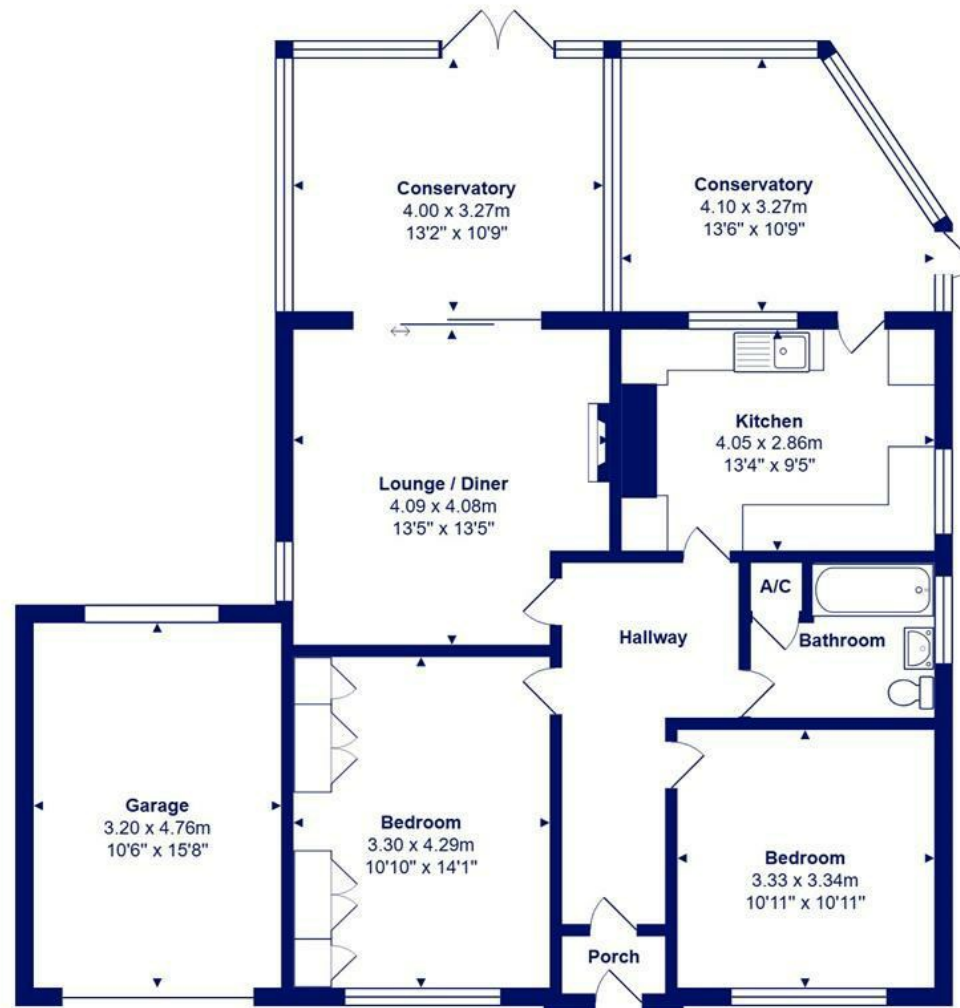
- Detached chalet bungalow of approximately 1060 sqft
- Large, south facing garden
- Two double bedrooms
- Kitchen
- Lounge and conservatory extension
- Family bathroom
- Driveway parking and attached garage with electric door
- Gas central heating and uPVC double glazing
- Walking distance of excellent local schools, Mudeford Quay and Avon Beach
- No chain, vacant possession





Location

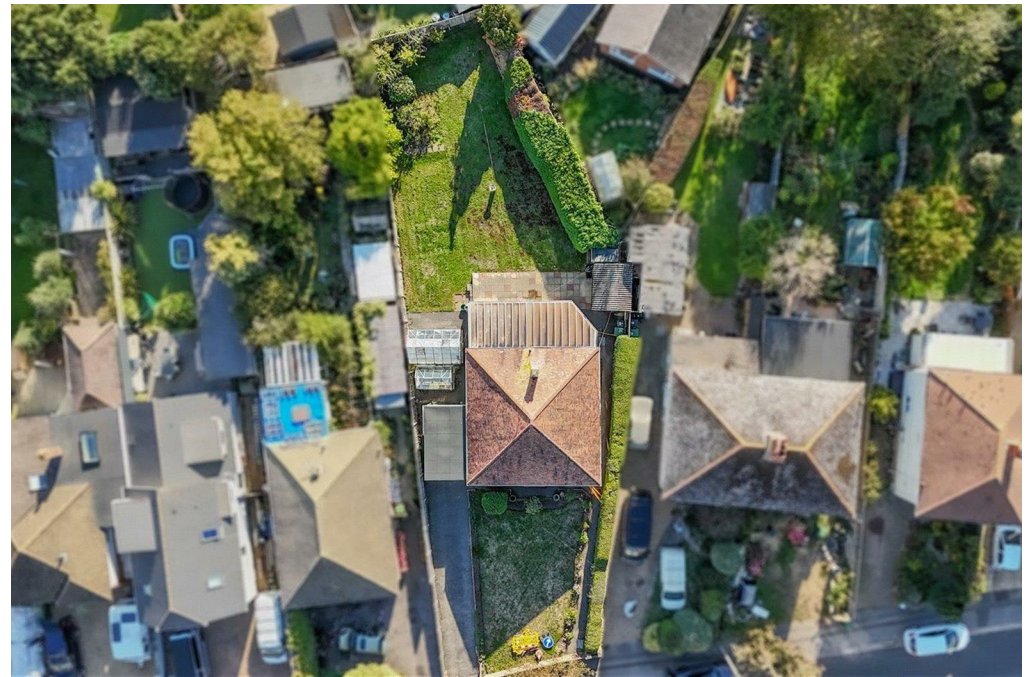


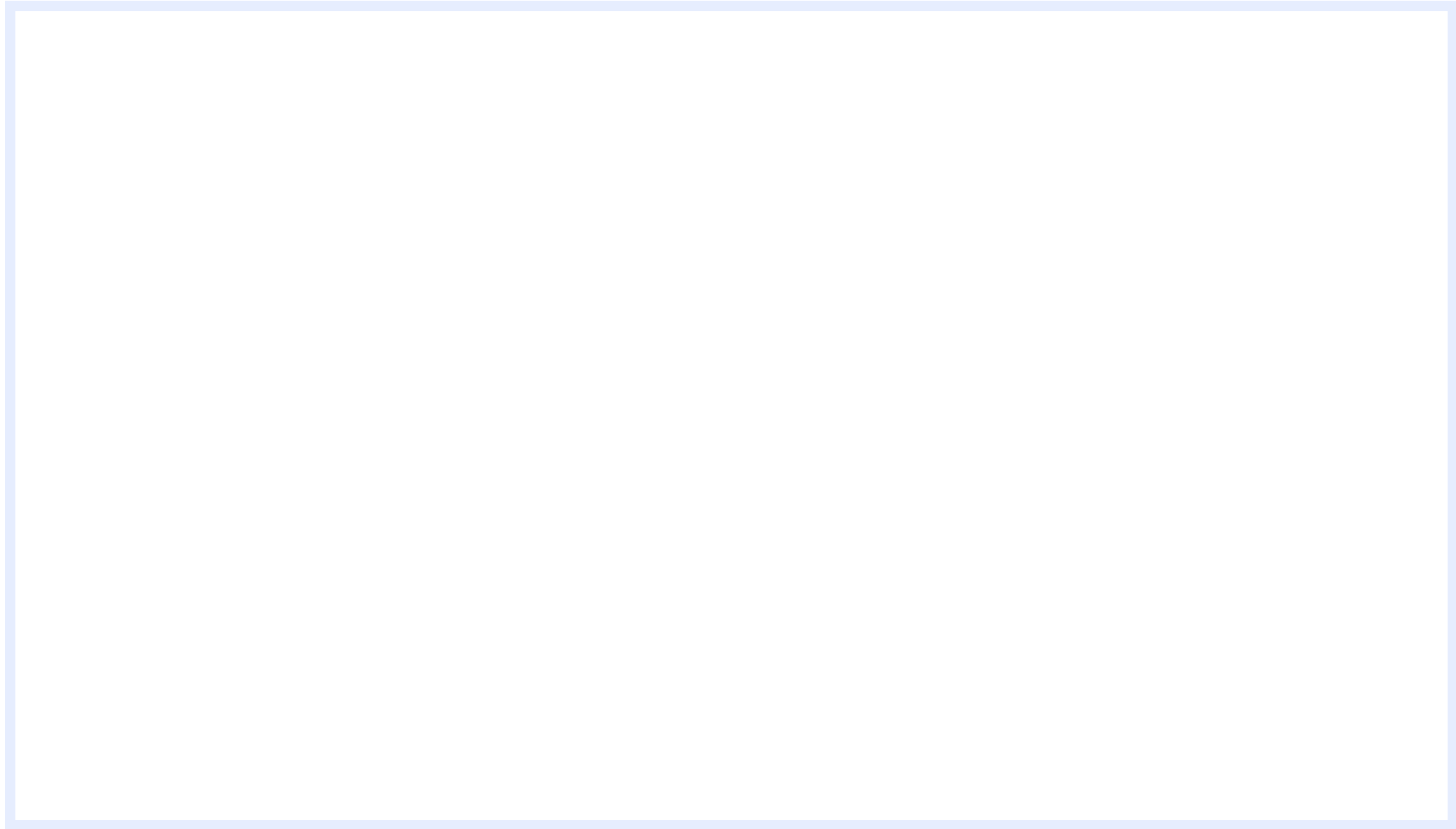


Total Area: 98.5 m<sup>2</sup> ... 1060 ft<sup>2</sup> (excluding garage)

All measurements are approximate and for display purposes only







---

[www.mitchells.uk.com](http://www.mitchells.uk.com)  
[Mundeford@mitchells.uk.com](mailto:Mundeford@mitchells.uk.com)  
01202 499295

Mundeford  
112-114 Cambridge House Stanpit  
Christchurch  
BH23 3ND

