



Belgrave Gardens, Oakwood, London, N14
Chain Free £800,000 Freehold

Anthony Webb
ESTATE AGENTS

Belgrave Gardens, Oakwood, London, N14

Nestled in the charming area of Oakwood, N14, this delightful semi-detached house offers four bedrooms and three receptions. Built in the 1930s, this property has been thoughtfully extended to provide ample living space, boasting an impressive 1,420 square feet.

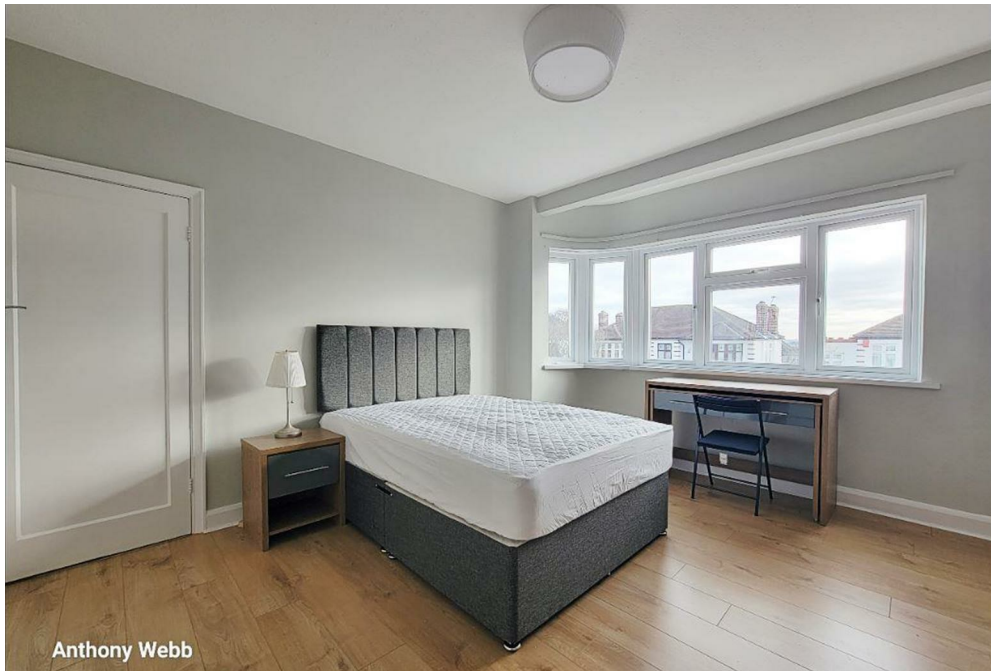
Upon entering the hallway with parquet wood floor, you are greeted by three inviting reception rooms, each offering a unique space for relaxation, entertainment, or family gatherings. A modern kitchen, utility and guest cloakroom complete the ground floor. The first floor offers three double bedrooms, one single bedroom and a modern bathroom and separate wc. Externally there is a good size rear garden, side entrance and off street parking for several cars.

One of the standout features of this home is its prime location. Situated within a few moments walk to the underground station, commuting to central London is a breeze, making it an excellent choice for professionals. Additionally, Trent Park and a range of local shops are just a stone's throw away, providing all the necessary amenities for everyday living.

Enfield Council Tax Band F

- Four bedrooms
- 1930s Semi-detached house
- Three receptions
- Modern kitchen
- Utility + w.c
- Modern Bathroom + separate wc
- Off Street parking
- Rear garden





Belgrave Gardens Oakwood London N14 4TS

Tenure: Freehold
Gross Internal Area: 1420.00 sq ft



Energy Efficiency Rating		Current	Potential
Very energy efficient - lower running costs			
(92 plus) A			83
(81-91) B			
(69-80) C			
(55-68) D		60	
(39-54) E			
(17-38) F			
(1-20) G			
Not energy efficient - higher running costs			
England & Wales		EU Directive 2002/91/EC	
Environmental Impact (CO ₂) Rating		Current	Potential
Very environmentally friendly - lower CO ₂ emissions			
(92 plus) A			
(81-91) B			
(69-80) C			
(55-68) D			
(39-54) E			
(17-38) F			
(1-20) G			
Not environmentally friendly - higher CO ₂ emissions			
England & Wales		EU Directive 2002/91/EC	



TOTAL FLOOR AREA: 132.0 sq.m. (1421 sq.ft.) approx.
Whilst every attempt has been made to ensure the accuracy of the floorplans contained here, measurements of doors, windows, rooms and any other items are approximate and no responsibility is taken for any error, omission or mis-statement. This plan is for illustrative purposes only and should be used as such by any prospective purchaser. The services, systems and appliances shown have not been tested and no guarantee as to their operability or efficiency can be given.
Made with Metapix ©2025

Property particulars as supplied by Anthony Webb Estate Agents are set out as a general outline in accordance with the Property Misdescriptions Act (1991) only for the guidance of intending purchasers of lessees, and do not constitute any part of an offer or contract. Details are given without any responsibility, and any intending purchasers, lessees or third parties should not rely on them as inspection or otherwise as to the correctness of each of them. We have not carried out a structural survey and the services, appliances and specific fittings have not been tested. All photographs, measurements, floor plans and distances referred to are given as a guide only and should not be relied upon for the purchase of carpets or any other fixtures statements or representations of fact, but must satisfy themselves by or of fittings, gardens, roof terraces, balconies and communal gardens as well as tenure and lease details cannot have their accuracy guaranteed for intending purchasers. Lease details, service ground rent (where applicable) are given as a guide only and should be checked and confirmed by your solicitor prior to exchange of contracts. no person in the employment of Anthony Webb has any authority to make any representation or warranty whatever in relation to this property.

348 Green Lanes, Palmers Green, London N13 5TJ
020 8882 7888
palmersgreen@anthonywebb.co.uk
anthonywebb.co.uk

Anthony Webb
ESTATE AGENTS