



90 Woodnesborough Road,

Guide Price £325,000

DOMINIC MURPHY POWERED BY exp TM UK

@ dominic.murphy@exp.uk.com

🌐 dominicmurphy.exp.uk.com

☎ 01304 746 016

90 Woodnesborough Road,

Situated in the charming and historic town of Sandwich, this beautifully proportioned semi-detached period home effortlessly blends character with modern living. Ideally positioned just a 10-minute stroll from the town centre, fast link train station, and well-regarded schools, the location is perfectly suited to families and professionals alike.

Inside, the heart of the home is the impressive open-plan ground floor, seamlessly combining the lounge and dining areas. A striking log burner takes centre stage, creating a warm and inviting atmosphere ideal for both relaxing and entertaining. To the rear, a bespoke fitted kitchen of excellent quality leads through to a conservatory, currently used as a practical utility space, offering flexibility to suit your needs. An external WC adds further convenience.

Upstairs, the property offers three bedrooms, including a bright and airy dual-aspect principal bedroom that is flooded with natural light. A well-appointed family bathroom completes the first floor.

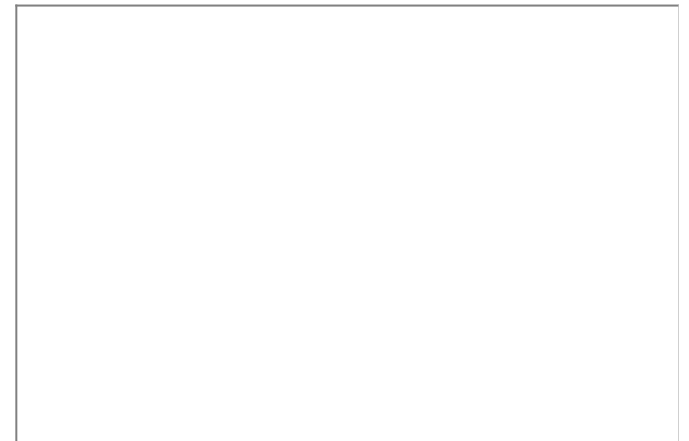
Outside, the rear garden is of a generous size, mainly laid to lawn, and benefits from side access and three useful storage sheds. To the front, newly laid off-road parking enhances the home's practicality.

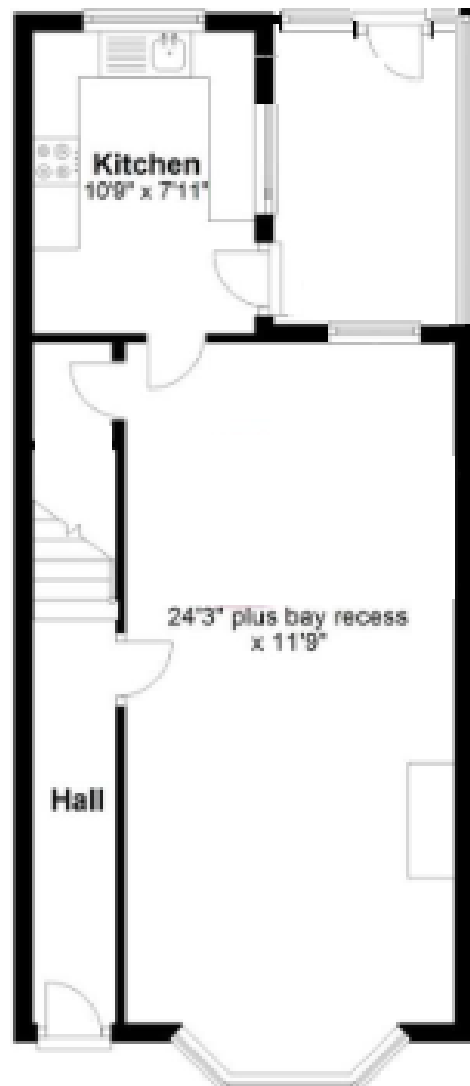
Offered with no onward chain, this delightful home presents a fantastic opportunity to move straight in and personalise to your taste. Early viewing is highly recommended to fully appreciate everything this property has to offer.











GROUND



FIRST