

BRENNAN

BESPOKE

£325,000

Manor Road

Kettering, NN15 6WE

PROPERTY SUMMARY

A beautifully presented three-bedroom semi-detached home, the ever-popular "Letchworth" design by Redrow, instantly recognisable by its striking diamond front window which adds real kerb appeal. Set on a sought-after modern development, the property offers driveway parking to the front and a private, low-maintenance rear garden ideal for relaxing or entertaining without the upkeep. Inside, the layout is practical and family-friendly, with a welcoming entrance hall, a comfortable lounge and a spacious kitchen/diner forming the heart of the home. Upstairs you'll find three well-proportioned bedrooms, including a main bedroom with en-suite, plus a modern family bathroom. Perfectly positioned for convenience, this location remains a firm favourite thanks to its close proximity to Wicksteed Park, along with easy access to local amenities and commuter links.

3



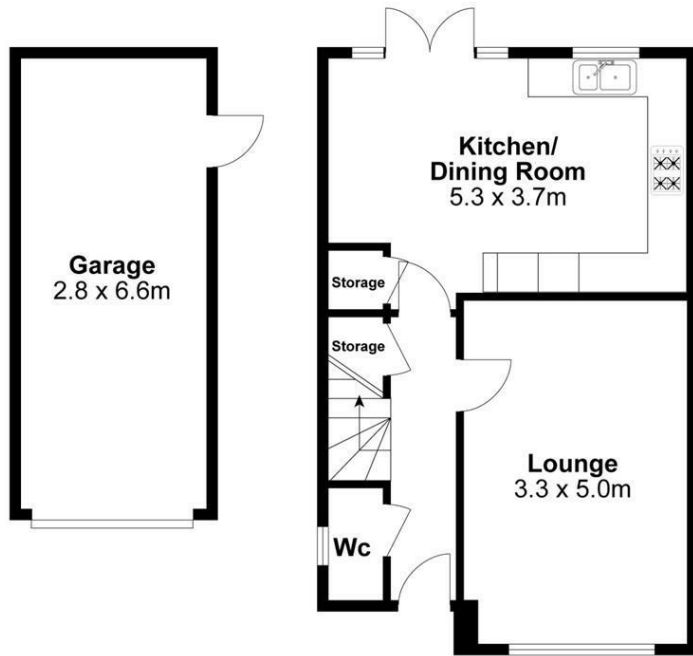
2



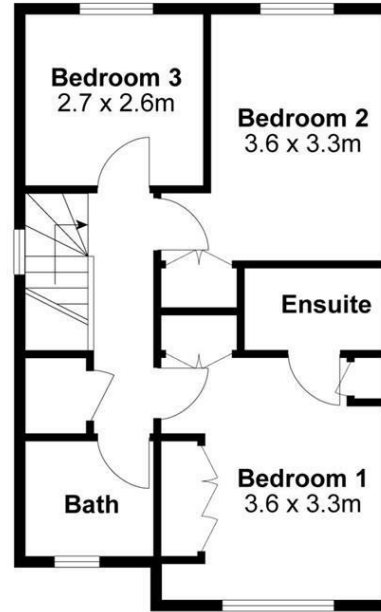
1







Ground Floor



First Floor

Internal Area Approx. : 1129 ft²

For identification only not to scale

BRENNAN
BESPOKE

LOCAL AUTHORITY
North Northamptonshire

TENURE
Freehold

COUNCIL TAX BAND
C

VIEWINGS
By prior appointment only

Energy Efficiency Rating		
	Current	Potential
<i>Very energy efficient - lower running costs</i>		
(92 plus) A		
(81-91) B		
(69-80) C		
(55-68) D		
(39-54) E		
(21-38) F		
(1-20) G		
<i>Not energy efficient - higher running costs</i>		
England & Wales	EU Directive 2002/91/EC	

Agents Note: Whilst every care has been taken to prepare these particulars, they are for guidance purposes only. All measurements are approximate and are for general guidance purposes only and whilst every care has been taken to ensure their accuracy, they should not be relied upon and potential buyers/tenants are advised to recheck the measurements

BRENNAN
BESPOKE

OFFICE ADDRESS
BRENNAN BESPOKE
2 The Tithe Barn Glendon Lodge Farm
Glendon
Kettering
Northamptonshire
NN14 1QF

OFFICE DETAILS
01536 904400
info@brennanbespoke.co.uk
<https://www.brennanbespoke.co.uk>