



# Belmont Street

London, NW1

Asking Price £600,000

A well-proportioned three-bedroom garden flat moments from Chalk Farm Underground Station.

The property features a spacious reception room, a separate kitchen, three well sized bedrooms, and a family bathroom. The principal bedroom benefits from direct access to a generous private rear patio, while a second bedroom benefits from its own private courtyard.

**CHESTERTONS**



# Belmont Street

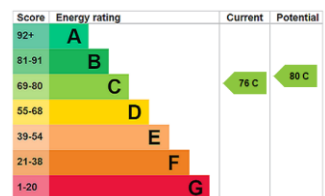
London, NW1

- Three Bedrooms
- Excellent Location
- Share Of Freehold
- Two Patio Gardens
- Good Condition



Belmont Street is the perfect location to explore the fantastic amenities of Camden Town, Chalk Farm, Belsize Park and Primrose Hill. Transport links are excellent with Chalk Farm underground around the corner and Kentish Town West overground Station in close proximity.

**Tenure:** Share of Freehold  
**Service Charge:** Ad/ Hoc  
**Ground Rent:** N/A  
**Local Authority:** Camden  
**Council Tax Band:** D

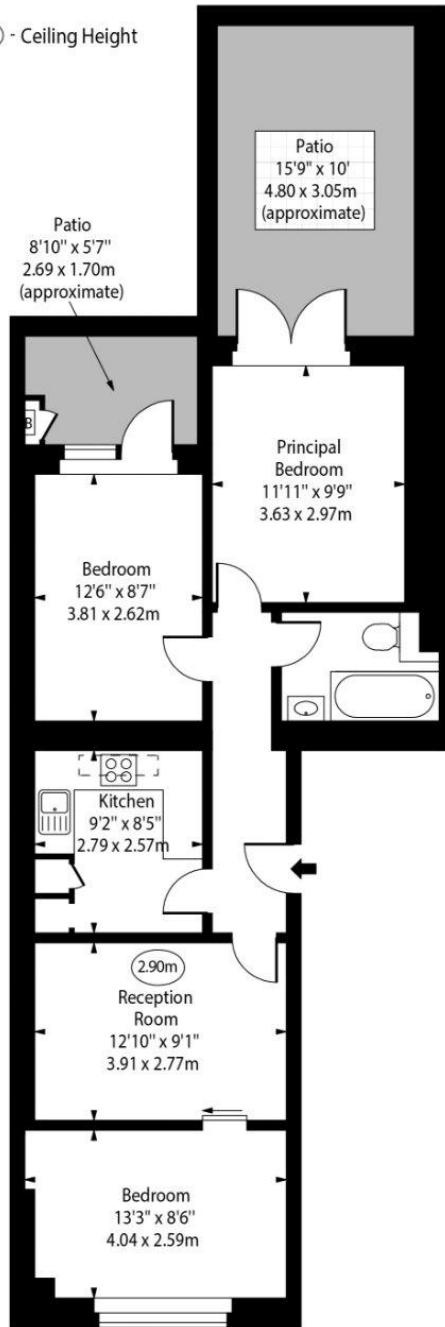


### *Chestertons Camden & Kentish Town Sales*

99-101 Parkway  
Camden  
London  
NW1 7PP  
camden@chestertons.co.uk  
020 7267 2053  
chestertons.co.uk

Belmont Street

○ - Ceiling Height



Ground Floor

Gross Internal Area - 680 Sq Ft - 63.17 Sq M

Approx Gross Internal Area 680 Sq Ft - 63.17 Sq M

Every attempt has been made to ensure the accuracy of the floor plan shown. However, all measurements, fixtures, fittings, and data shown are approximate interpretations and for illustrative purposes only. Measured according to the RICS. Not To Scale.

www.goldlens.co.uk  
Ref. No. 032167K

