

Savoy Court, Firecrest Drive
Hampstead, NW3

WAYNE & SILVER



The Property

A wonderful opportunity to acquire a spacious lateral three-bedroom, two-bathroom apartment in the highly sought-after Savoy Court on Firecrest Drive, extending to approximately 1,794 sq ft / 166.6 sq m.

The apartment features an impressive 21-foot reception room with semi-open-plan kitchen, opening onto a terrace with views over Hampstead Heath. The principal bedroom benefits from built-in storage, an en-suite bathroom and a private balcony overlooking the beautifully maintained communal gardens. Two further well-proportioned double bedrooms complete the accommodation.

Savoy Court is an exceptionally well-located, gated purpose-built development, directly opposite Hampstead Heath. The building is impeccably maintained and offers a lift service and a resident caretaker. Additional benefits include secure underground parking, with a space large enough to accommodate two vehicles. Hampstead Underground Station (Northern Line) is approximately a 10–15 minute walk away.

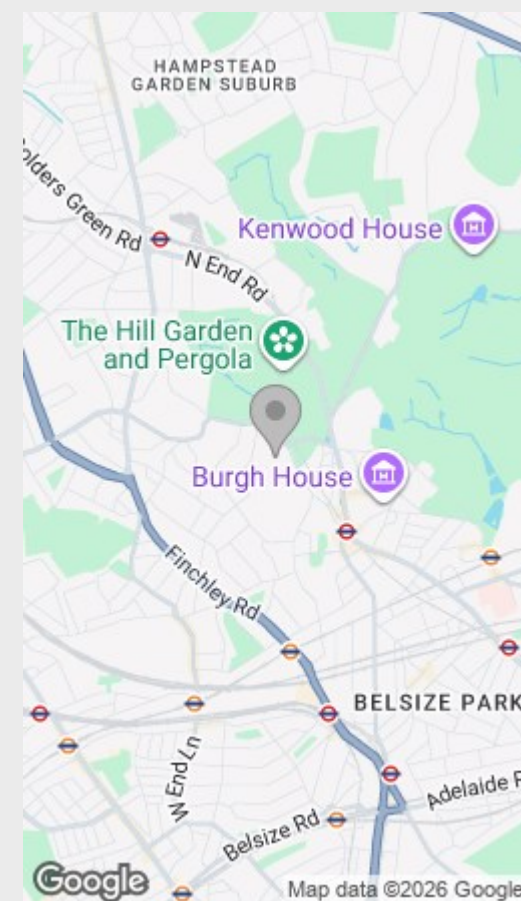
Key Features

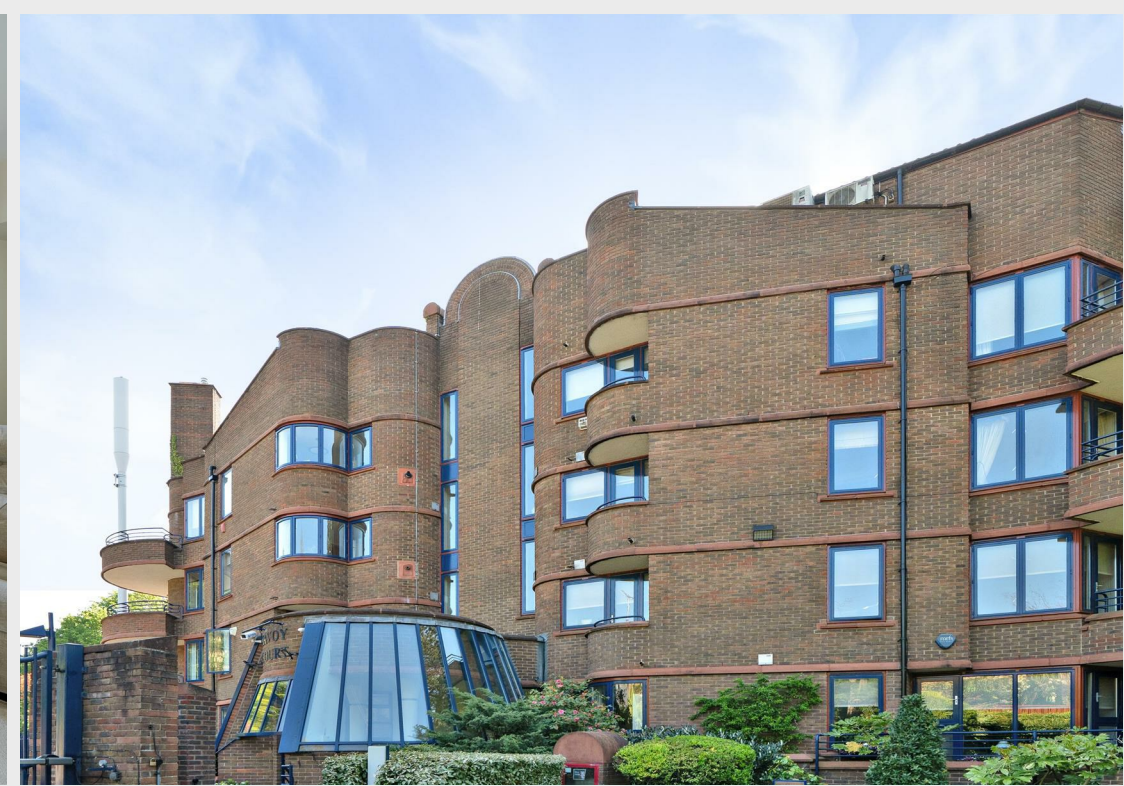
- Directly opposite Hampstead Heath
- Gated purpose built development
- Caretaker
- Underground parking space
- Lateral 3 bedroom 2 bathroom apartment





Location







WAYNE
& SILVER

Savoy Court, Firecrest Drive

£2,000,000

BEDROOMS

3

BATHROOMS

2

INTERNAL

1794.00 sq ft

EPC

C

LOCAL COUNCIL

Camden

TAX BAND

H

TENURE

Share of Freehold

Floorplan & EPC

£2,000,000

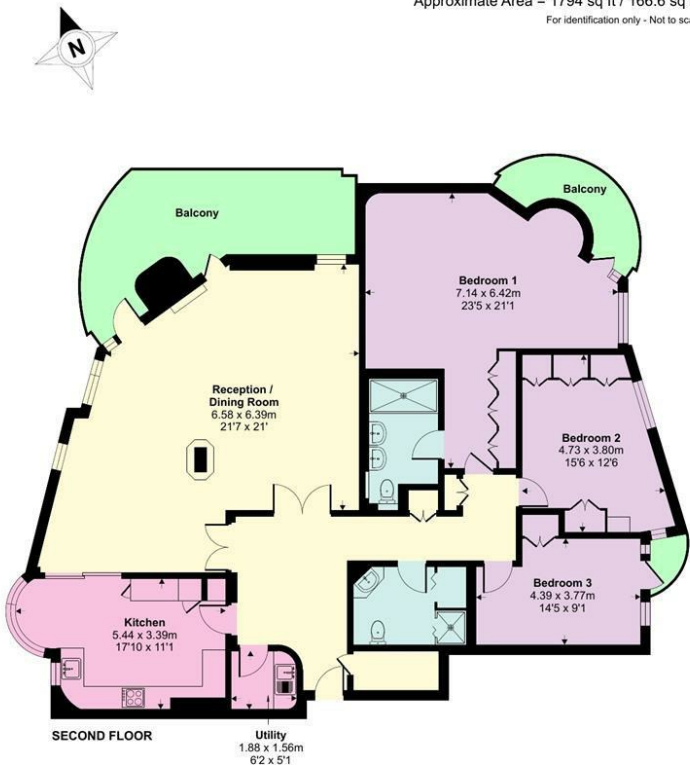
IMPORTANT INFORMATION

Wayne & Silver, its clients and any joint agents give notice that 1: They are not authorised to make or give any representations or warranties in relation to the property either here or elsewhere, either on their own behalf or on behalf of their client or otherwise. They assume no responsibility for any statement that may be made in these particulars. These particulars do not form part of any offer or contract and must not be relied upon as statements or representations of fact. 2: Any areas, measurements or distances are approximate. The text, photographs and plans are for guidance only and are not necessarily comprehensive. It should not be assumed that the property has all necessary planning, building regulation or other consents and Wayne & Silver have not tested any services, equipment or facilities. Purchasers must satisfy themselves by inspection or otherwise.

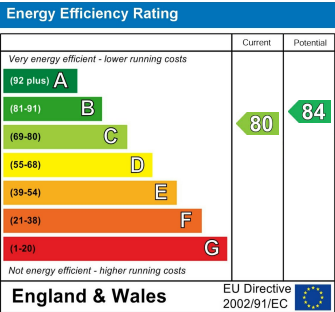
WAYNE
& SILVER

Savoy Court, Firecrest Drive, Hampstead, NW3

Approximate Area = 1794 sq ft / 166.6 sq m
For identification only - Not to scale



Floor plan produced in accordance with RICS Property Measurement 2nd Edition, incorporating International Property Measurement Standards (IPMS2 Residential). © nichcom 2025. Produced for TK (Hampstead) Ltd. REF: 1278561



WAYNE & SILVER

41 Heath Street
Hampstead
London
NW3 6UA

wayne-silver.com

We would be delighted to tell you more
020 7431 4488
info@wayne-silver.com

Important Notice: Wayne & Silver, its clients and any joint agents give notice that 1: They are not authorised to make or give any representations or warranties in relation to the property either here or elsewhere, either on their own behalf or on behalf of their client or otherwise. They assume no responsibility for any statement that may be made in these particulars. These particulars do not form part of any offer or contract and must not be relied upon as statements or representations of fact. 2: Any areas, measurements or distances are approximate. The text, photographs and plans are for guidance only and are not necessarily comprehensive. It should not be assumed that the property has all necessary planning, building regulation or other consents and Wayne & Silver have not tested any services, equipment or facilities. Purchasers must satisfy themselves by inspection or otherwise.