

Penn Grove, Norwich, NR3

Offers In Region Of £230,000

3 1 2



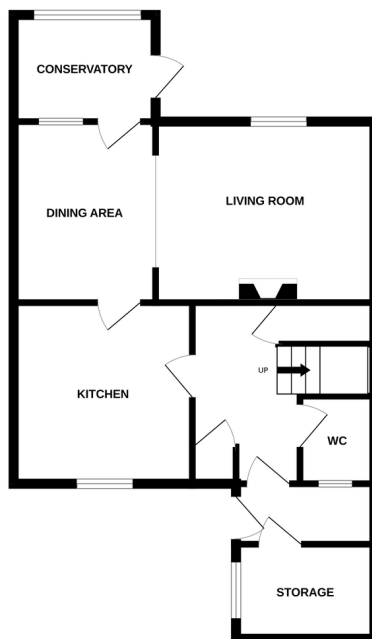
Moneyproperties bring to market this spacious three-bedroom terraced house enjoying views over open park land. The property is an ideal purchase for small families, first-time buyers or investors. The accommodation comprises of an entrance porch with a versatile storage room which could easily be converted to suit buyers' requirements, generous kitchen, open plan living room/diner, conservatory and downstairs wc. To the upstairs comes three well-proportioned bedrooms with built in wardrobes to bedroom one along with a family bathroom off the landing. Outside the property benefits from a good-sized rear garden along with ample on-street parking.

Tenure: Freehold EPC: C Council Tax: B

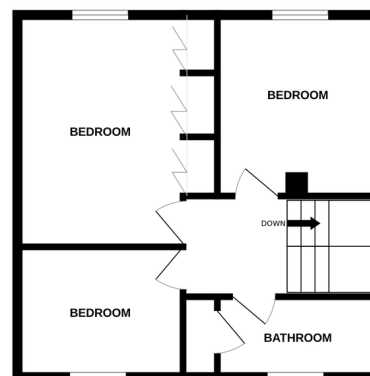
Key Features

- Spacious three-bedroom terraced house
- Spacious kitchen with an open plan living room/diner
- Ideal purchase for first time buyers, small families or investors
- Located within walking distance to Norwich City Centre and local amenities
- Must be viewed to fully appreciate
- Three well-proportioned bedrooms with built in wardrobes to bedroom one
- Versatile storage room which could be converted to meet buyers requirements
- Good-sized rear garden with ample on-street parking
- Within ease of access to the NDR and A47 for commuting
- See our full online listing for further details including flood risk, broadband speed and other material information

GROUND FLOOR



1ST FLOOR



Whilst every attempt has been made to ensure the accuracy of the floorplan contained here, measurements of doors, windows, rooms and any other items are approximate and no responsibility is taken for any error, omission or mis-statement. This plan is for illustrative purposes only and should be used as such by any prospective purchaser. The services, systems and appliances shown have not been tested and no guarantee as to their operability or efficiency can be given.
Made with Metropix ©2026