



£295,000

*At a glance...*



3



1



2



EPC

C



COUNCIL  
TAX

C

**holland  
& odam**

3 Countryman Close  
Meare  
Meare  
Somerset  
BA6 9FU

**TO VIEW**

30 High Street, Glastonbury,  
Somerset BA6 9DX

**01458 833123**

[glastonbury@hollandandodam.co.uk](mailto:glastonbury@hollandandodam.co.uk)



## Directions

Upon entering the village of Meare, along the B3151 from Glastonbury, continue on through, passing the village school on your left. After approximately 0.5 miles, you will see the turning for Countryman Close on your right hand side.

## Services

Mains electricity, water and drainage are connected.  
Electric central heating system.

## Local Authority

Somerset Council  
0300 1232224  
[somerset.gov.uk](http://somerset.gov.uk)

## Tenure

Freehold



## Location

Meare is a rural village set on the picturesque Somerset Levels, 3 miles to the west of Glastonbury. The village provides a primary school, parish church and farm shop. The historic town of Glastonbury offers a range of shopping facilities, St Dunstan's Community School and Millfield Preparatory School in Edgarley. Street is within 4 miles and provides a further choice of shopping facilities, Strode College and Strode Theatre. The M5 (junction 22) is within 12 miles, Bristol International Airport 22 miles and the nearest main line rail link to London Paddington is at Castle Cary, 19 miles.

## Insight

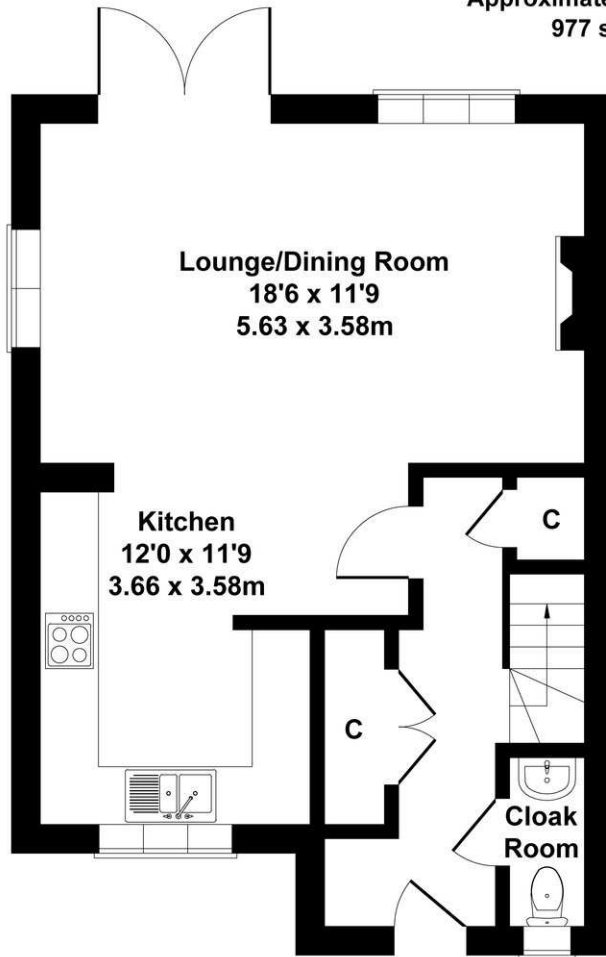
Situated within a small development on the edge of the popular village of Meare, this well presented three bedroom home offers light and practical accommodation arranged over two floors. The property benefits from an open-plan sitting and dining room with wood burning stove, a fitted kitchen, principal bedroom with en suite, enclosed rear garden and off road parking. Energy efficient photovoltaic roof panels further enhance the appeal of this comfortable village home.

- Modern three-bedroom semi-detached home situated within a small development on the edge of the village of Meare, conveniently placed for Glastonbury, Street and the surrounding Somerset countryside.
- Bright and spacious open-plan sitting and dining room featuring a wood-burning stove, ample space for entertaining and French doors opening directly onto the rear patio and garden.
- Well-appointed fitted kitchen with a range of contemporary wall and base units, integrated oven, hob, extractor hood, dishwasher and fridge/freezer, with outlook to the front.
- Principal bedroom enjoying its own en suite shower room, complemented by two further bedrooms and a family bathroom fitted with a white suite and shower over the bath.
- Energy conscious design incorporating photovoltaic roof panels, double glazing and electric heating, helping to reduce running costs and improve efficiency throughout the year.
- Enclosed rear garden designed for ease of maintenance, comprising a paved seating terrace, lawn and timber shed, providing a safe and manageable outdoor space.

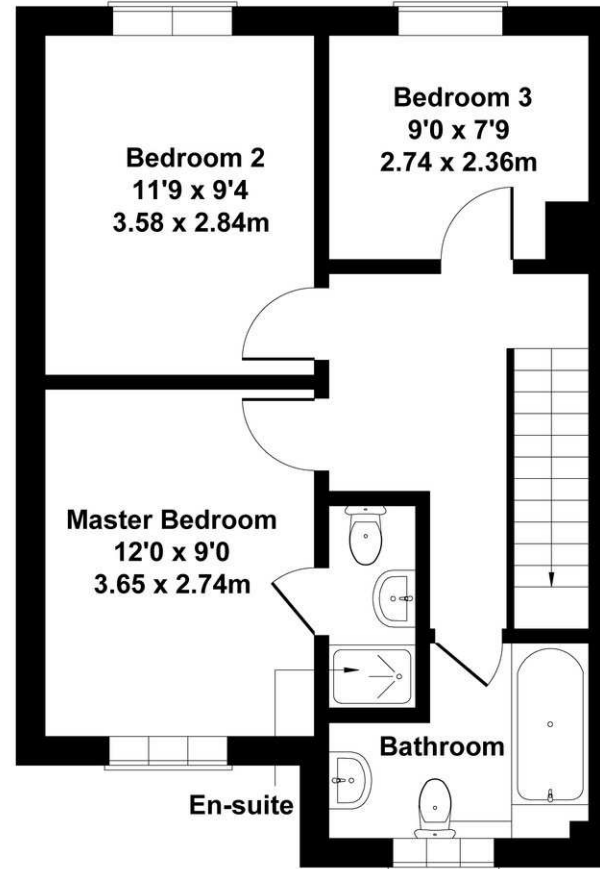


# 3 Countryman Close

Approximate Gross Internal Area  
977 sq ft - 91 sq m



**GROUND FLOOR**



**FIRST FLOOR**

Not to Scale. Produced by The Plan Portal 2026  
For Illustrative Purposes Only.

## DISCLAIMER

CONSUMER PROTECTION FROM UNFAIR TRADING REGULATIONS 2008. The Agent has not tested any apparatus, equipment, fixtures and fittings or services and so cannot verify that they are in working order or fit for the purpose. A Buyer is advised to obtain verification from their Solicitor or Surveyor. References to the Tenure of a Property are based on information supplied by the Seller. The Agent has not had sight of the

title documents. A Buyer is advised to obtain verification from their Solicitor. Items shown in photographs are not included unless specifically mentioned within the sales particulars. They may however be available by separate negotiation. Buyers must check the availability of any property and make an appointment to view before embarking on any journey to see a property.

DATA PROTECTION. Personal information provided by customers wishing to receive information and/or services from the estate agent and the Property Sharing Experts (of which it is a member) for the purpose of providing services associated with the business of an estate agent but specifically excluding mailing or promotions by a third party. If you do not wish your personal information to be used for any of these purposes, please notify us.