



## Braemar Road, TW8

£553 Per week

A beautifully presented and generous three double bedroom Victorian cottage, full of period charm and character. Perfect for a professional couple or family, this lovely home offers a bright reception room, separate dining area, and a modern fully fitted kitchen with wood flooring throughout.

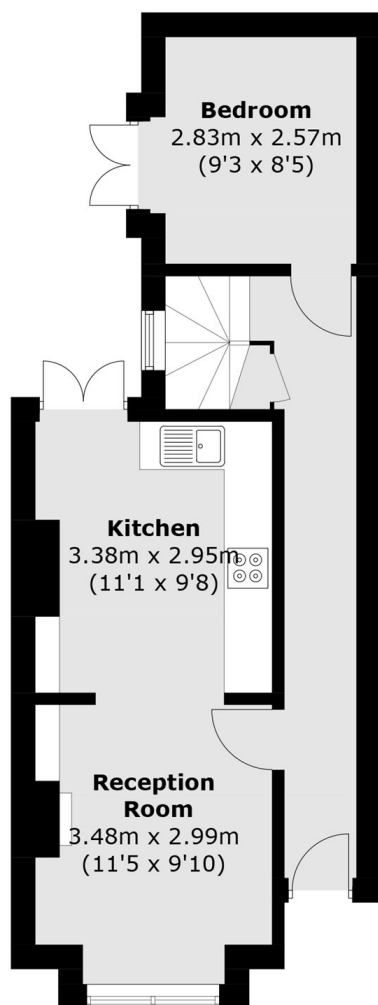
One of the double bedrooms is conveniently located on the ground floor, offering flexibility as a guest room or home office. Upstairs, there are two further spacious double bedrooms and a large family bathroom. To the rear, the property features a beautiful south-facing private garden.

Braemar Road is a popular road in Central Brentford and less than half a mile to Brentford Mainline Station and even closer to the High Street and the River Thames. The location offers easy access to Boston Manor and South Ealing underground stations (Piccadilly line) and great links

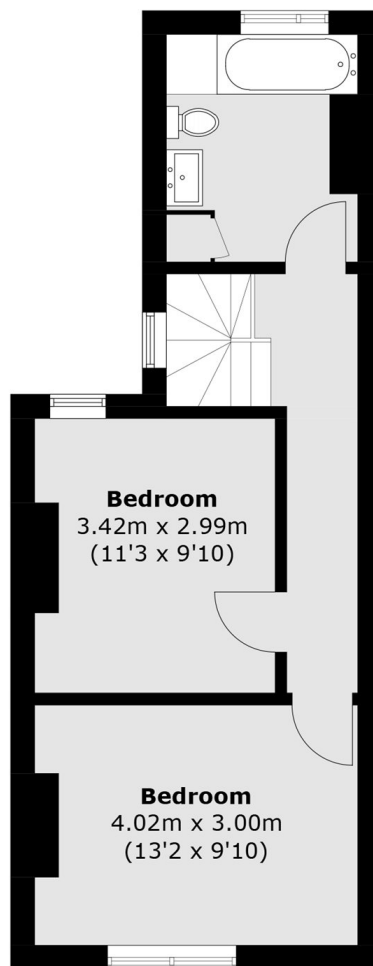
### Features

- Two Bedrooms
- Two Reception Rooms
- Private Garden
- Modern Kitchen
- Family Bathroom
- South Facing Garden

# Braemar Road, Brentford, TW8



**Ground Floor**



**First Floor**

Total area (approx.): 75.8 sq. m (815.9 sq. ft)