



Guide Price
£450,000

Freehold

3x  1x  3x 

**Hatch Gardens,
Tadworth, Surrey, KT20**

OVER 60?

Secure this property
for up to **59% less!**

cubitt & west
Helping you move forwards



Main features

- Off-road parking for multiple cars
- Low-maintenance rear garden
- Open-plan living area with conservatory
- Potential to extend (side, rear, loft - STPP)
- Short walk to Tattenham Corner station and several well-regarded schools

Accommodation

GROUND FLOOR

- Porch
- Hallway
- Lounge: 14'7 x 11'0 (4.45m x 3.36m)
- Dining Room: 11'9 x 9'5 (3.58m x 2.87m)
- Kitchen: 9'5 x 9'3 (2.87m x 2.82m)
- Conservatory: 10'3 x 9'0 (3.13m x 2.75m)

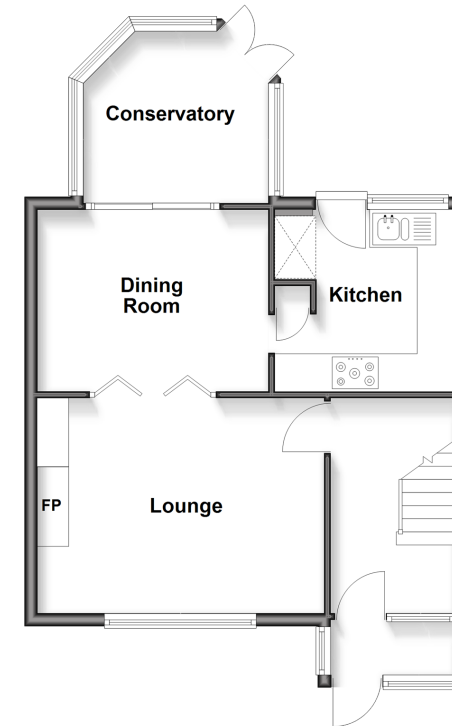
FIRST FLOOR

- Landing
- Bedroom 1: 13'5 x 9'1 (4.09m x 2.77m)
- Bedroom 2: 11'10 x 9'0 (3.61m x 2.75m)
- Bedroom 3: 8'0 x 6'3 at narrowest point (2.44m x 1.91m)
- Bathroom
- Separate Toilet

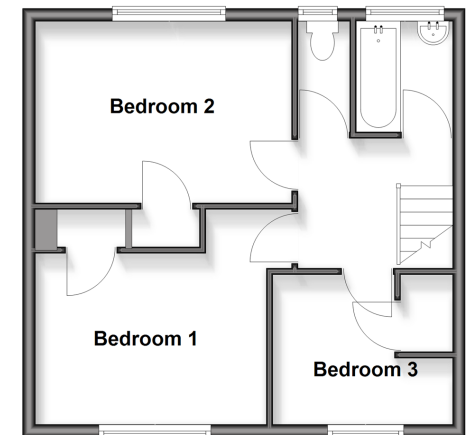
OUTSIDE

- Rear Garden
- Driveway

Ground Floor
Approx. 51.5 sq. metres (554.6 sq. feet)



First Floor
Approx. 42.1 sq. metres (452.8 sq. feet)



Call Banstead - 01737 352233 ■ cubittandwest.co.uk

- If buying to rent, please check if Local Authority licensing schemes apply before proceeding
- Through a Homewise Home For Life Plan people aged 60+ can secure this property for up to 59% less, by purchasing a Lifetime Lease



20105633/20260509/NF1/OK