



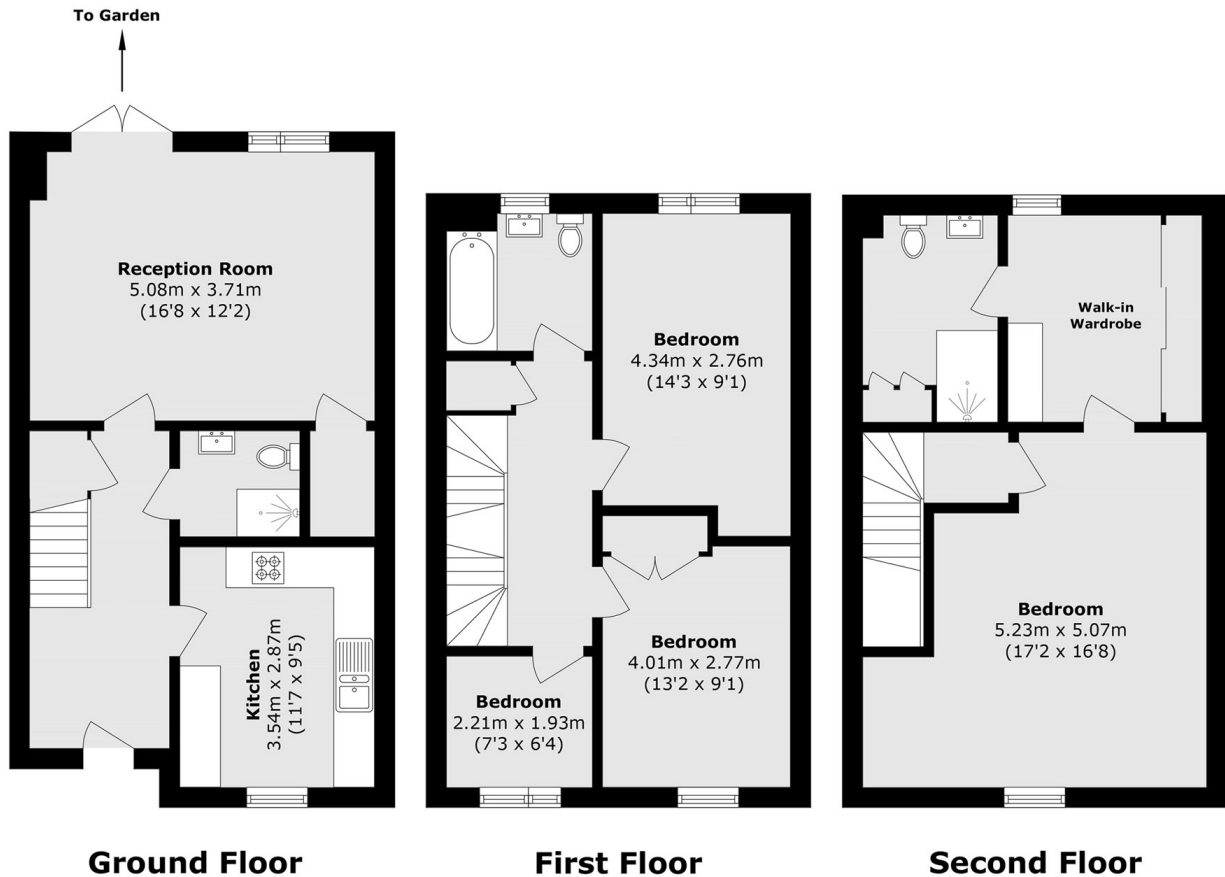
Avedon Close, HA2

£625,000

This modern end of terrace house, is an ideal family home. The spacious layout is well-maintained, offering ample room for relaxation and entertaining guests. Conveniently located, this property also features off-street parking, ensuring hassle-free access for residents.

Avedon Close is conveniently located for local shops, schools and Headstone Manor Park. Headstone Lane Station is within easy reach, providing convenient links into Central London via London Overground services.

- Town House • Four Bedrooms • Solar Panels •
- Walk In Wardrobe • Three Bathrooms • EPC Rating A •



Total area (approx.): 131.8 sq. m (1418.6 sq. ft)

David Conway
020 8422 5222

Energy Rating: A We aim to make our particulars both accurate and reliable. However they are not guaranteed; nor do they form part of an offer or contract. If you require clarification on any points then please contact us, especially if you're travelling some distance to view. Please note that appliances and heating systems have not been tested and therefore no warranties can be given as to their good working order.