

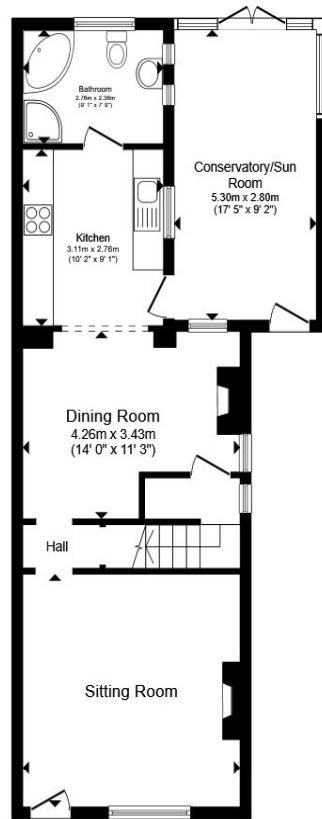


31 Pepys Terrace, Impington, Cambridge, CB24 9NT

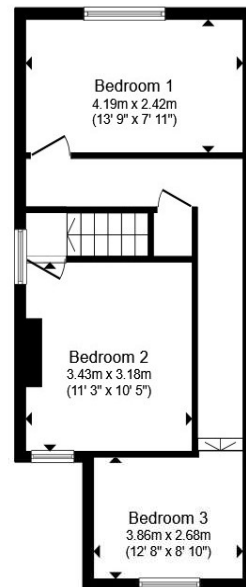
welcome to Pepys Terrace, Impington

An attractive, older-style semi-detached family home offering three generous double bedrooms, off-road parking and a detached one-bedroom annexe set within the rear garden. The property is offered for sale with no upward chain.

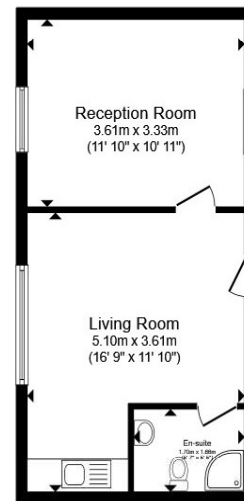




Ground Floor



First Floor



Annex

Total floor area 145.4 m² (1,565 sq.ft.) approx

This floor plan is for illustrative purposes only. It is not drawn to scale. Any measurements, floor areas (including any total floor area), openings and orientation are approximate. No details are guaranteed, they cannot be relied upon for any purpose and they do not form part of any agreement. No liability is taken for any error, omission or misstatement. A party must rely upon its own inspection(s). Powered by www.focalagent.com



Accommodation -

Sitting Room

Inner Hall

Dining Room

Kitchen

Conservatory/Sun Room

Family Bathroom

First Floor Landing

Bedroom One

Bedroom Two

Bedroom Three

Outside

Annexe

Open Plan Living/Diner

Double Bedroom/Reception Room

Shower Room

welcome to Pepys Terrace, Impington

- Semi Detached Character Home
- Three Double Bedrooms
- Open Plan Kitchen/Diner
- Conservatory
- One Bedroom Annexe/Home Office Studio

Tenure: Freehold EPC Rating: D
Council Tax Band: C

£515,000



view this property online [sequencehome.co.uk/Property/HIS100210](https://www.sequencehome.co.uk/Property/HIS100210)

Please note the marker reflects the
postcode not the actual property



Property Ref:
HIS100210 - 0007

1. MONEY LAUNDERING REGULATIONS Intending purchasers will be asked to produce identification documentation at a later stage and we would ask for your co-operation in order that there is no delay in agreeing the sale. 2. These particulars do not constitute part or all of an offer or contract. 3. The measurements indicated are supplied for guidance only and as such must be considered incorrect. Potential buyers are advised to recheck measurements before committing to any expense. 4. We have not tested any apparatus, equipment, fixtures or services and it is in the buyers interest to check the working condition of any appliances. 5. Where an EPC, or a Home Report (Scotland only) is held for this property, it is available for inspection at the branch by appointment. If you require a printed version of a Home Report, you will need to pay a reasonable production charge reflecting printing and other costs. 6. We are not able to offer an opinion either written or verbal on the content of these reports and this must be obtained from your legal representative. 7. Whilst we take care in preparing these reports, a buyer should ensure that his/her legal representative confirms as soon as possible all matters relating to title including the extent and boundaries of the property and other important matters before exchange of contracts.



01223 214400



histon@tylers.net



19 High Street, CAMBRIDGE, Cambridgeshire,
CB24 9JD



[sequencehome.co.uk](https://www.sequencehome.co.uk)