



**The Esplanade, Plymouth, PL1 2PJ**  
**£390,000 Share of the Freehold**



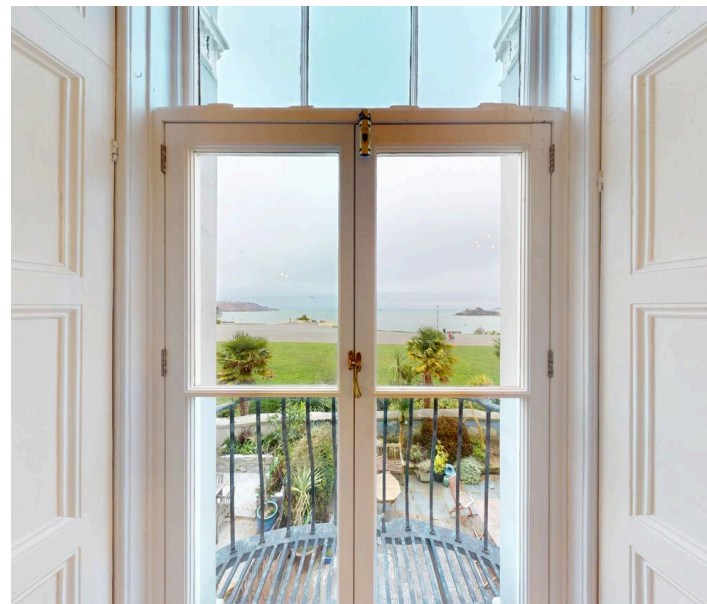
## The Esplanade, Plymouth, PL1 2PJ

Elegant two-bed first-floor apartment in a Grade II Listed Georgian building on Plymouth Hoe. Panoramic sea views, period features, resident parking, close to city centre, transport, and amenities.

Council Tax band: D

Tenure: Share of Freehold

- A Grand Two Bedroom first floor apartment in this Grade II Listed Georgian House dating from 1836
- Drawing Room with picture windows offering wonderful views looking over Plymouth Hoe, towards Plymouth Sound and beyond
- A compact but useable Kitchen
- Shower Room
- A Large Master Bedroom and a further generous double bedroom
- Grad II Listed (List Entry No. 1386468)
- Resident Permit Parking Scheme operated by Plymouth City Council
- Conveniently located for ease of access to the areas wide range of civic amenities



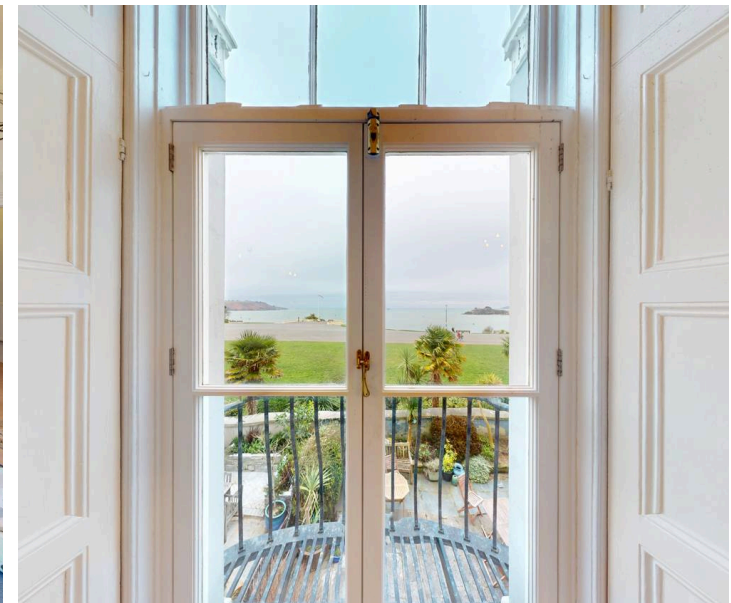
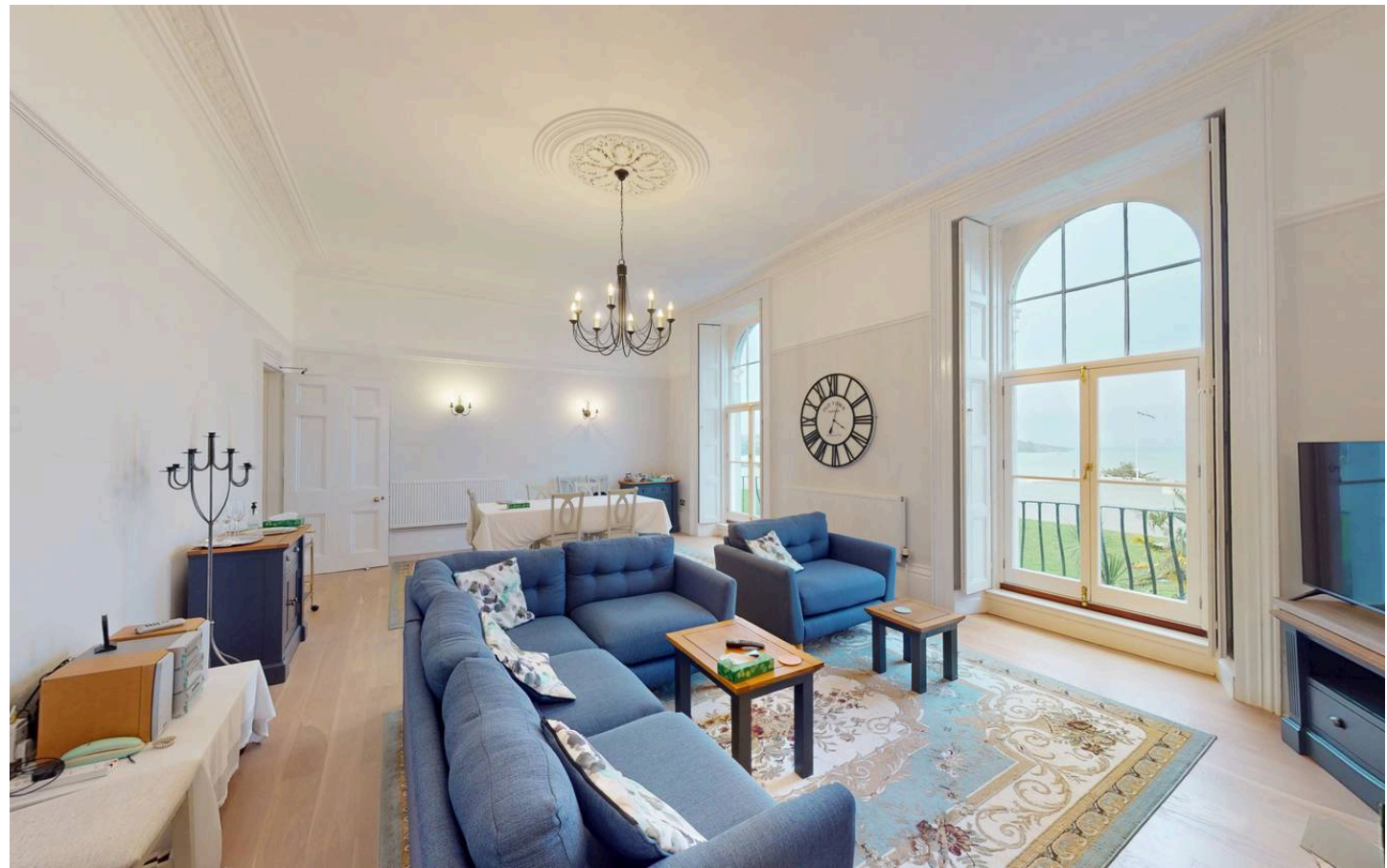
## Flat 2

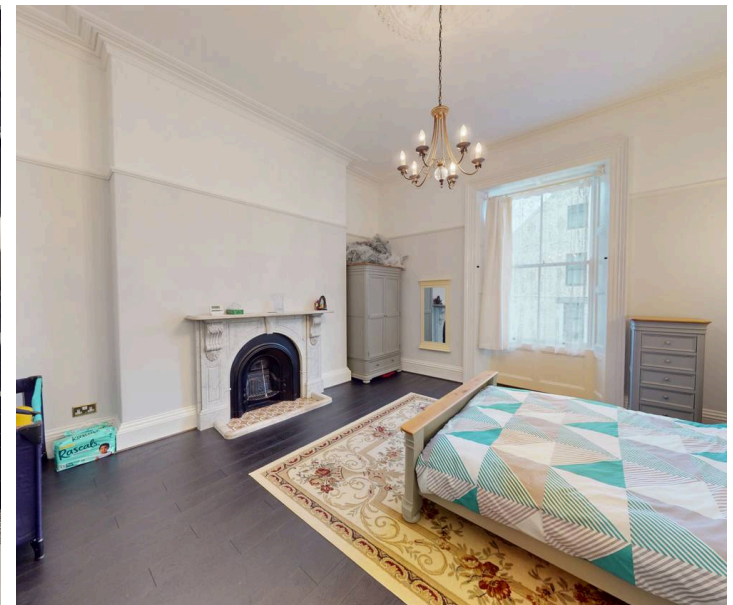
The Esplanade, Plymouth < PL1 2PJ

Step into a slice of Plymouth's illustrious history with this elegant two-bedroom first-floor apartment, nestled within a majestic Grade II Listed Georgian residence dating back to 1836. Commanding an unrivalled position on The Esplanade, it overlooks the sweeping vistas of Plymouth Hoe, where the iconic emerald-green expanse meets the shimmering turquoise waters of Plymouth Sound—offering a daily spectacle that's as inspiring as it is serene, with distant views of Drake's Island adding a touch of historic intrigue.

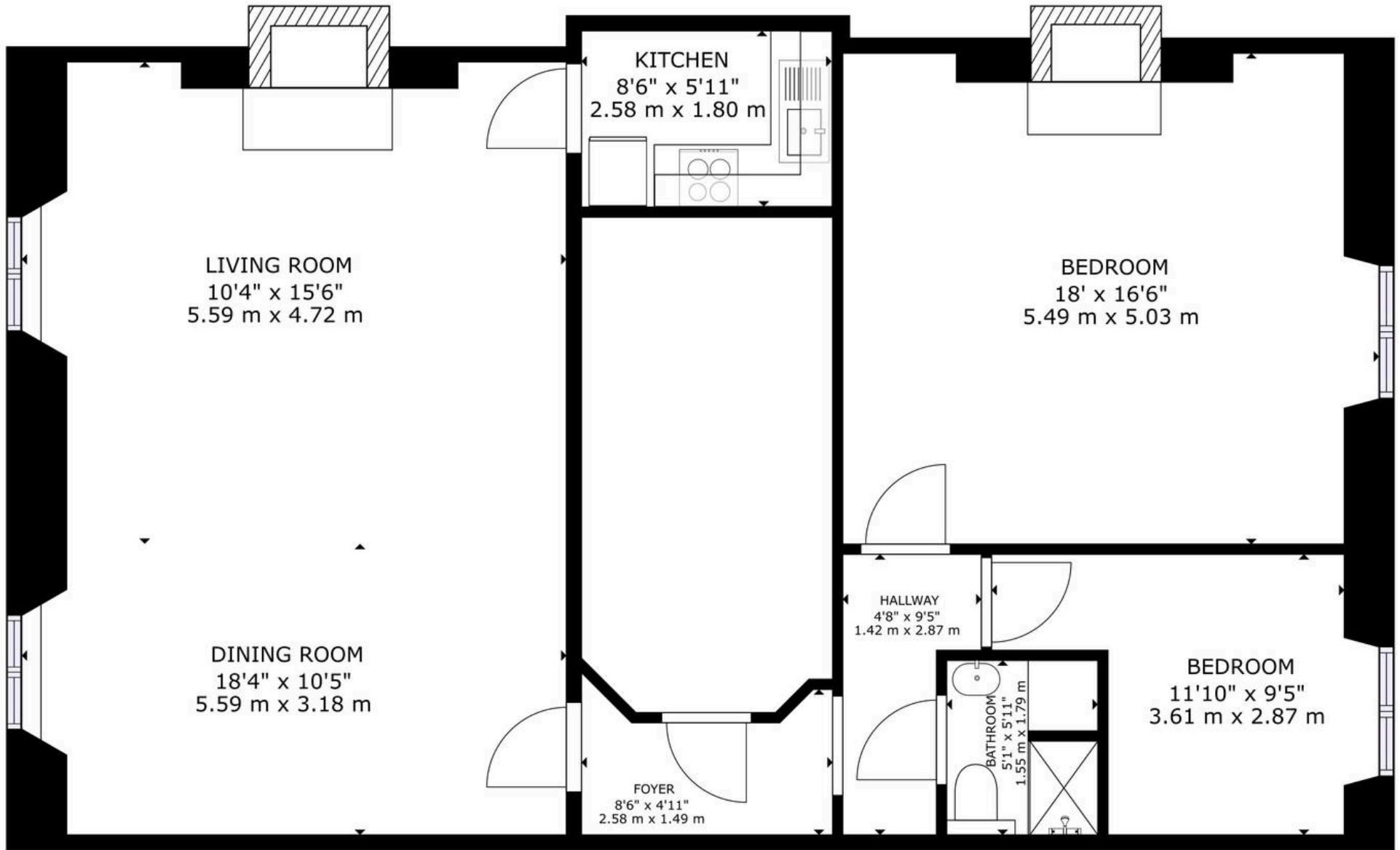
Upon entering, you're greeted by a grand drawing room that serves as the heart of the home, its towering picture windows framing breathtaking panoramic views that stretch across the Hoe to the distant horizon. This space is ideal for relaxed evenings or sophisticated gatherings, blending period charm with abundant natural light that dances across the room. The layout flows seamlessly to a spacious master bedroom, exuding refined comfort with its high ceilings, ornate original features, and ample room for personalisation. A second generous double bedroom provides versatility, whether for guests, a home office, or a cosy retreat. The compact kitchen maximises efficiency with clever design, equipped for contemporary needs while preserving the property's historic essence. Completing the interior is a stylish shower room, merging modern fittings with timeless appeal for effortless daily routines.

- A Grand Two Bedroom first floor apartment in this Grade II Listed Georgian House dating from 1836
- Drawing Room with picture windows offering











## Atwell Martin

Atwell Martin, 65 Southside Street – PL1 2LA

01752 202121

[plymouthsales@atwell-martin.co.uk](mailto:plymouthsales@atwell-martin.co.uk)

[plymouth.atwellmartin.co.uk/](http://plymouth.atwellmartin.co.uk/)

Atwell Martin Plymouth endeavour to ensure the accuracy of property details produced and displayed. Please note that we have not tested any apparatus, equipment, fixtures, fittings or services and so cannot verify that they are connected, in working order or fit for purpose. It is imperative that the buyer of any property makes such checks, prior to purchase so as to satisfy themselves of the properties suitability for their purchase. .

