

0 Bed Studio
located in South Norwood

£1,100 Per month



8C2 Oliver Grove
South Norwood
London
SE25 6EJ



0



1



1



D

- **Front top Studio Flat**
- **£1100 plus £200.00 on top for bills for 12 months**
- **Un furnished**
- **Ideal for Norwood Junction station**
- **UPVC double glazing**
- **Available mid February**
- **Near Shops and amenities**
- **View now - Ideal for single or Couple - no children**
- **Gas central heating system**

AVAILABLE NOW!! VERY LARGE!!! TOP FLOOR VICTORIAN STYLE STUDIO FLAT, close to shops, Norwood Junction Mainline / Over ground station and transport links to Croydon. To be LET with Extra £200 towards BILLS for the first 12 months. Council Tax Band C - Shared £2103.91. Rent £1100 plus £200 per month towards bills for the first 12 months.

Entrance

Stairs to top floor.

Entrance Hall

Front door. Vinyl flooring.

Studio room

17'0 x 14'2

UPVC double glazed windows to front. Two double radiators. Carpet as laid. Sofa. Coffee Table. Wardrobe. Shelving unit.

Kitchen / Diner

15'3 x 9'9

UPVC double glazed windows to side. Range of wall and base units with work surfaces over. Built-in oven and hob. Washing machine. Fridge/freezer. Dining table.

Shower room

UPVC double glazed windows to front. Shower cubicle. Low level wc. Vanity wash hand basin. Heated towel rail. Vinyl flooring.

Authority

London Borough Of Croydon Band C - Shared bill included.

CONTACT

5 High Street
London
SE25 6EP

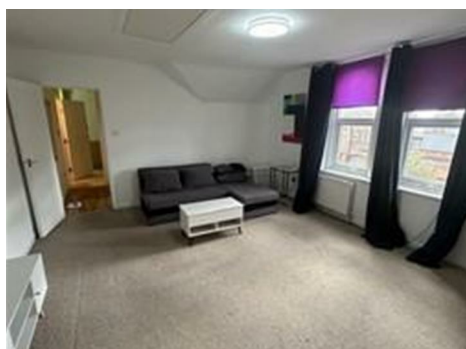
EMAIL

Info@northwoods.co.uk

TELEPHONE

020 8653 3377

northwoods.co.uk



Energy Efficiency Rating			Environmental Impact (CO ₂) Rating		
	Current	Potential		Current	Potential
Total energy efficient - lower running costs					
92-100	A		92-100	A	
81-91	B		81-91	B	
69-80	C		69-80	C	
55-68	D		55-68	D	
43-54	E		43-54	E	
31-42	F		31-42	F	
1-30	G		1-30	G	
Not energy efficient - higher running costs					
EU Directive 2002/91/EC			EU Directive 2002/91/EC		
England & Wales			England & Wales		