



## ANGUS HOUSE, SW2

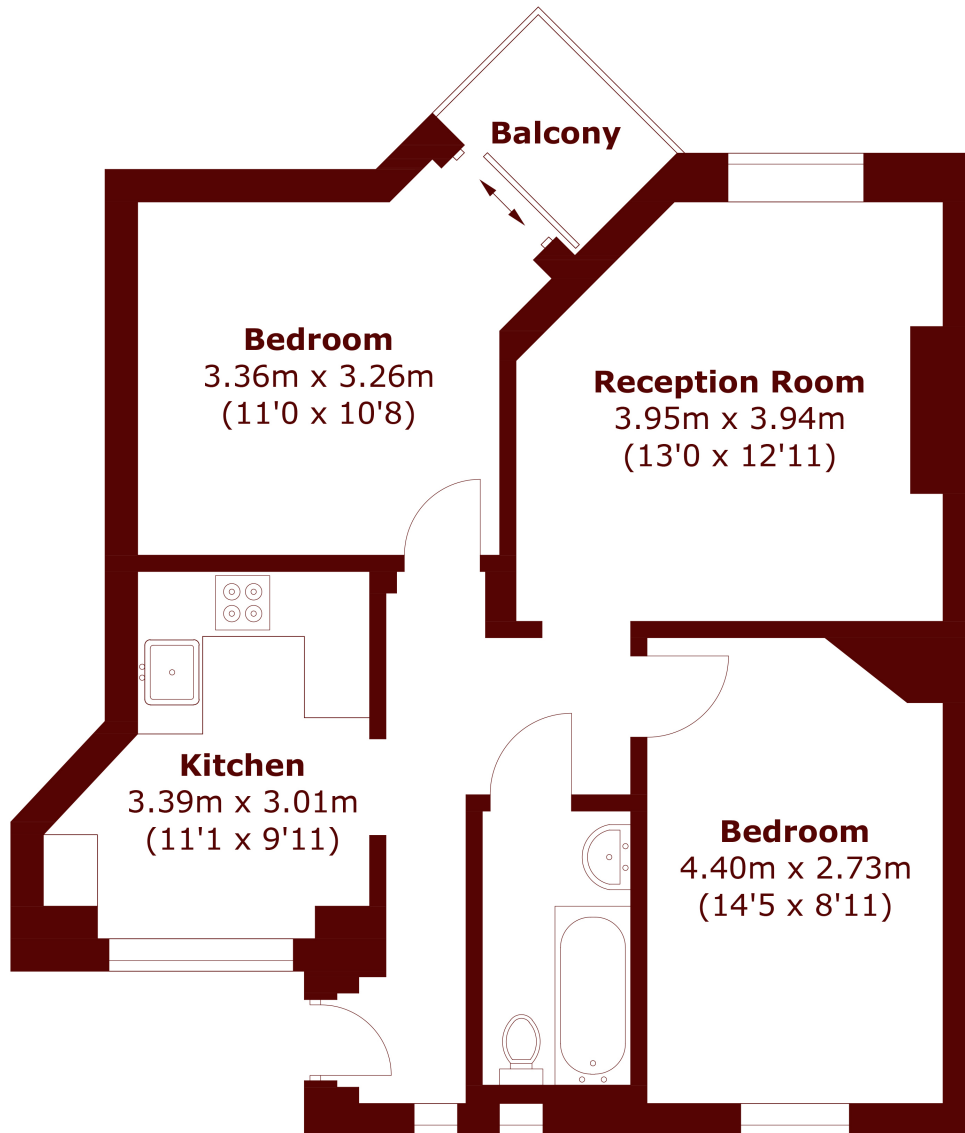
£2,200 per month

A well presented, bright and generously proportioned two bedroom flat situated in a lovely development, offering good conditions throughout and easy access to amenities, featuring wooden floors and lots of natural light.

Two bedrooms  
Over 630sq ft  
Wooden floors

Bright  
Spacious  
Energy rating: c.

# STEP INSIDE ANGUS HOUSE



Total area (approx.): 59.4 sq. m (639.4 sq. ft)  
Balcony (approx.): 2.4 sq. m (25.8 sq. ft)

Balham & Clapham South  
020 8772 9200

Energy Rating: We aim to make our particulars both accurate and reliable. However, they are not guaranteed; nor do they form part of an offer or contract. If you require clarification on any points then please contact us, especially if you're traveling some distance to view. Please note that appliances and heating systems have not been tested and therefore no warranties can be given as to their good working order

MARSH &  
PARSONS