

MUNDAY'S

Grove Park, Camberwell

£950,000



Big, beautiful, recently renovated conversion flat within a supersized semi, with two bedrooms and two bathrooms, and a large garden which has side access and direct access from the second bedroom and the kitchen/reception room. Chain free.

The location is leafy Camberwell Grove Conservation Area. Denmark Hill and Peckham Rye stations are reached by foot in 10 and 12 minutes respectively. Permit-parking is available on the street.

Throughout the property, you have notably high ceilings, high-end fixtures and fittings, and a neutral decorative scheme.

*Munday's Estate Agents Ltd.*  
2 Mary Boast Walk  
London SE5 8SP  
020 3318 8900

[www.mundays.com](http://www.mundays.com)

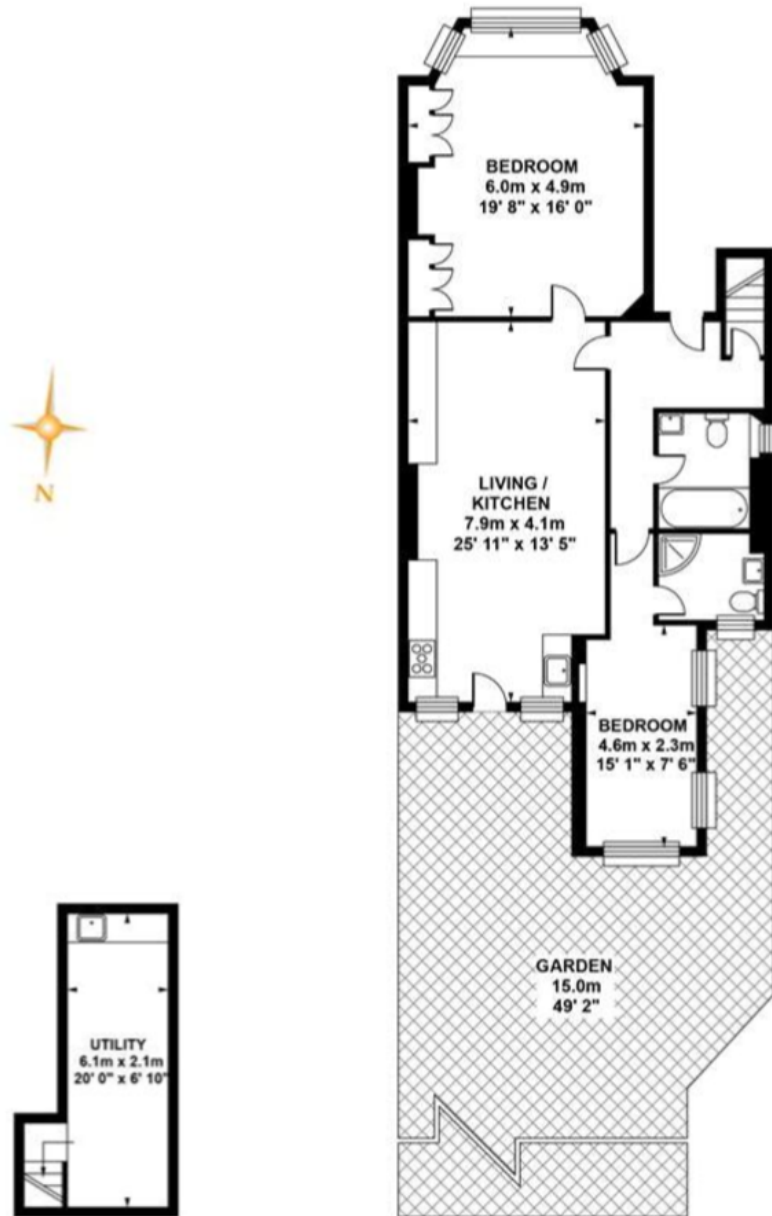
MUNDAY'S



*Munday's Estate Agents Ltd.*  
2 Mary Boast Walk  
London SE5 8SP  
020 3318 8900

[www.mundays.com](http://www.mundays.com)

# MUNDAY'S



## LOWER GROUND FLOOR

Approximate, internal area :  
14.39 sqm / 155 sq ft

## GROUND FLOOR

Approximate, internal area :  
91.87 sqm / 989 sq ft