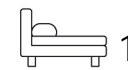




Living
made
better

Roma Corte
Lewisham, SE13 7GS



Offers In Excess Of £300,000

Roma Corte, Lewisham, SE13 7GS

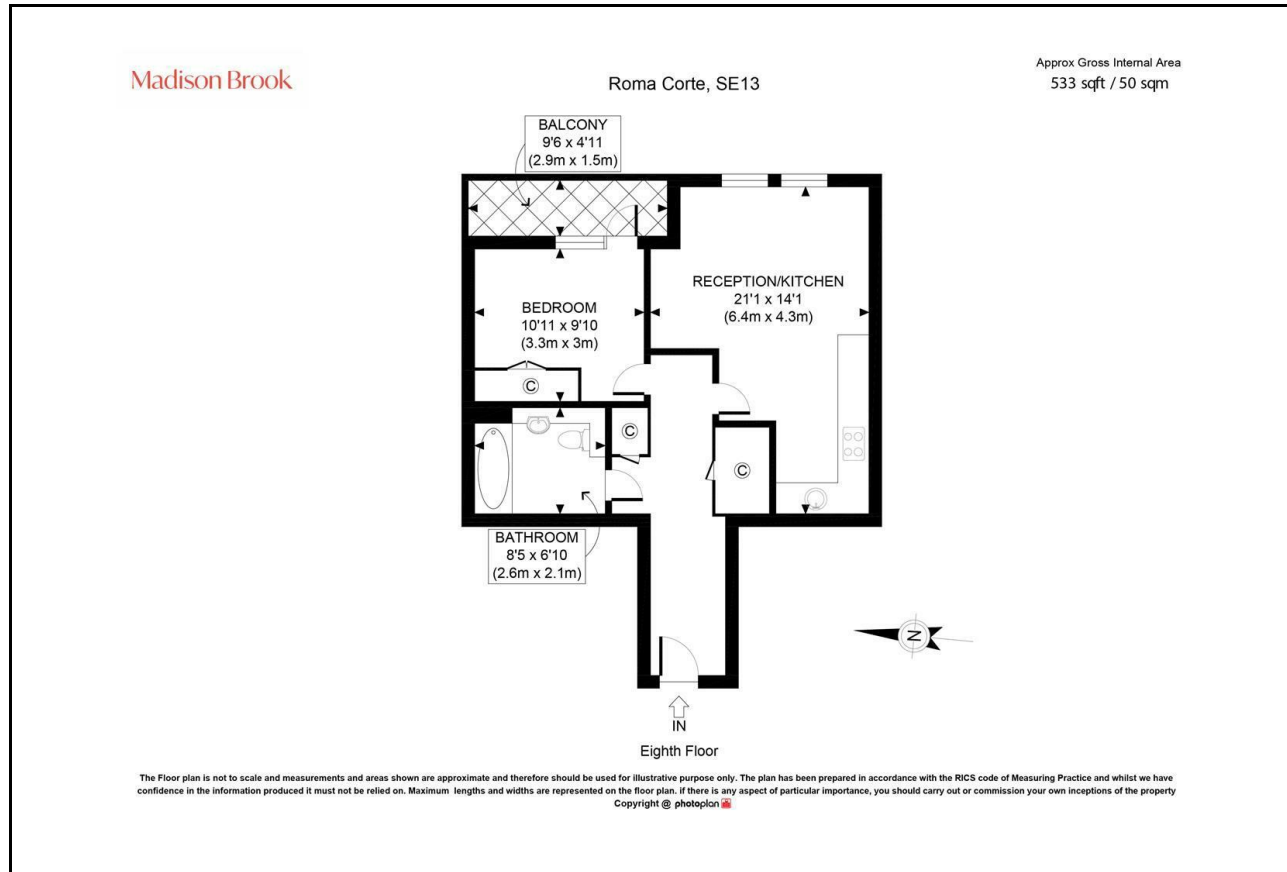
Madison Brook

Property Summary

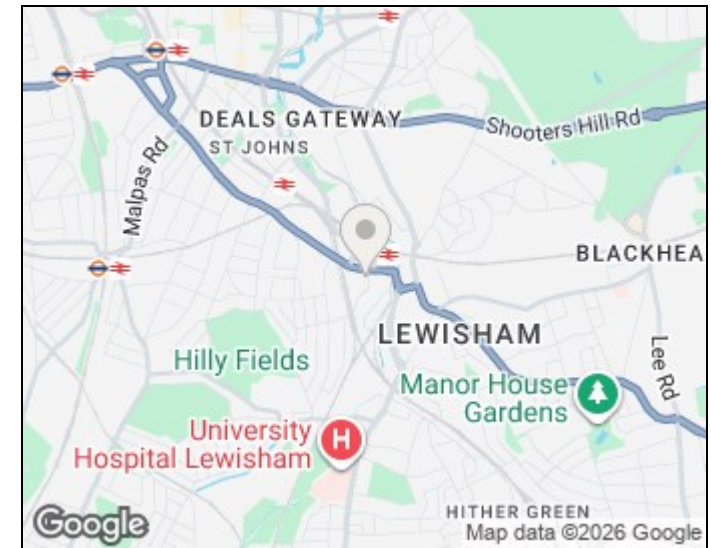
Situated on the eighth floor of the sought-after Roma Corte development, this bright and modern one-bedroom apartment spans approximately 533 sq.ft. and is offered to the market chain free. The property features a spacious open-plan reception and kitchen area with integrated appliances and ample room, a private balcony, a well-proportioned double bedroom with fitted storage, a contemporary three-piece bathroom suite and additional storage throughout. Residents enjoy access to a 24-hour concierge service and a communal terrace. Ideally located just 0.2 miles from Lewisham Station and 0.3 miles from Lewisham Shopping Centre.

Lease Remaining: 114 years | Service Charge: £2,280 pa | Ground Rent: £454 pa

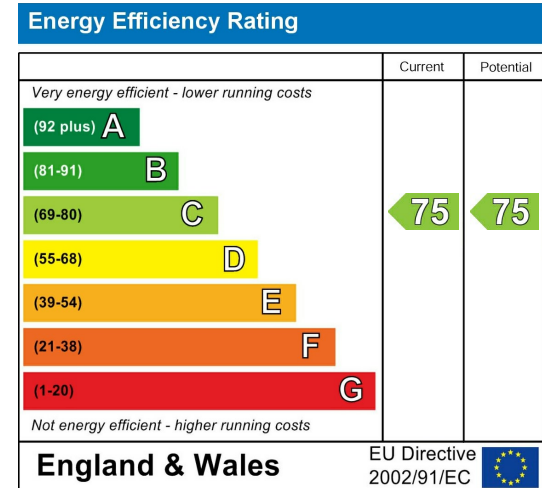
Floorplan



Area Map



Energy Efficiency Graph



43 Loampit Vale, Lewisham, London, SE13 7FT

Tel: 020 3946 6200 Email:
lewisham@madisonbrook.com
<https://madisonbrook.com/>

These particulars, whilst believed to be accurate are set out as a general outline only for guidance and do not constitute any part of an offer or contract. Intending purchasers should not rely on them as statements of representation of fact, but must satisfy themselves by inspection or otherwise as to their accuracy. No person in this firm's employment has the authority to make or give any representation or warranty in respect of the property.