



Effra Road, SW19

£1,400 Per calendar month

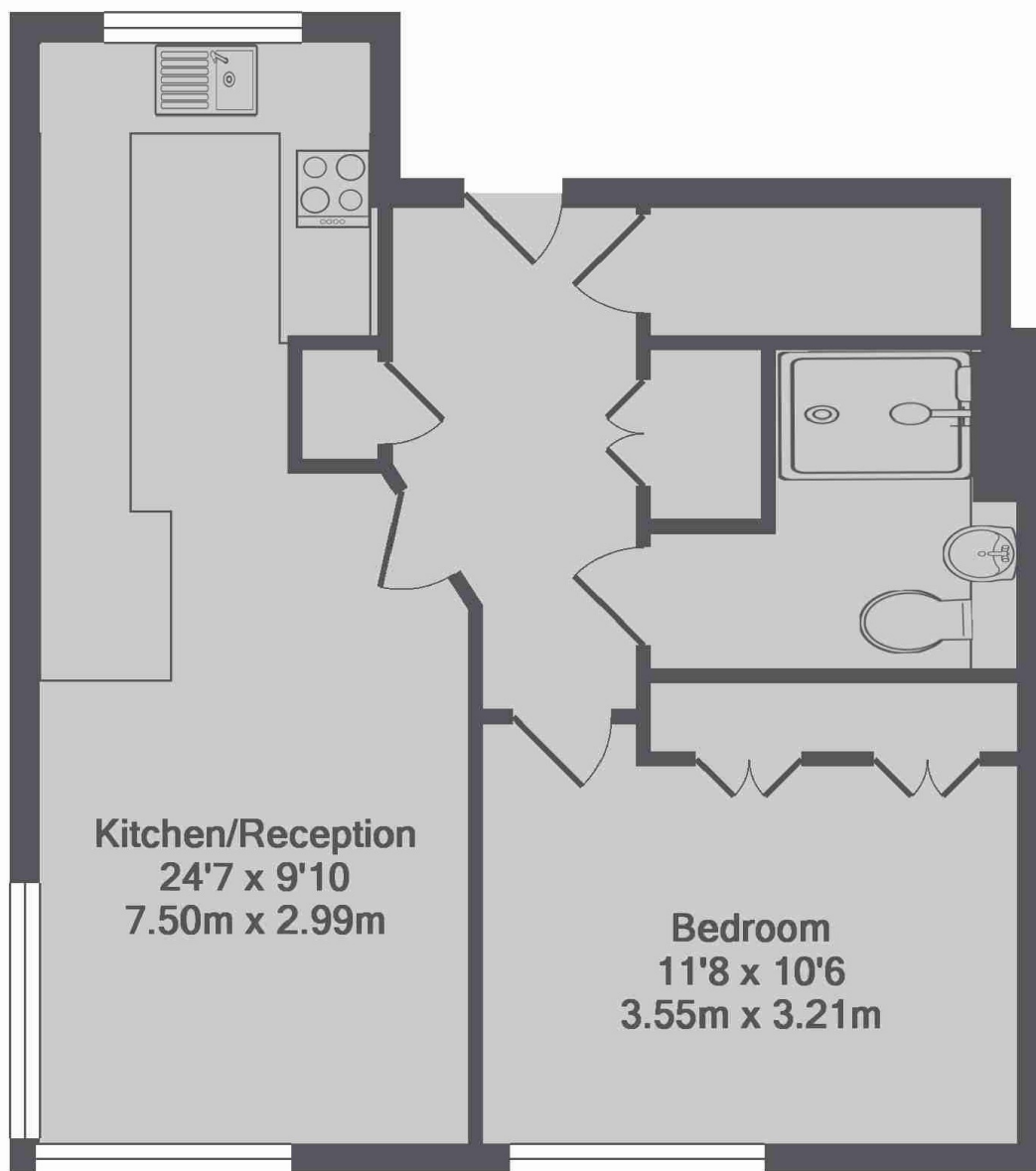
A delightful one bedroom flat, offering good living space and a large bedroom. The property has a private entrance and would make a fantastic home for a single professional or couple.

Ideally located in a quiet street, a short distance from South Park Gardens, Wimbledon Broadway and Mainline station.

Features

- One Bedroom
- Private Entrance
- Ground Floor
- Quiet Location
- Wimbledon Station
- South Park Gardens

**Effra Road,
London, SW19**



Lee House, SW19
Total Approx. Floor Area 486 Sq.Ft. (45.1 Sq.M.)