



Hyde Park Square, London, W2

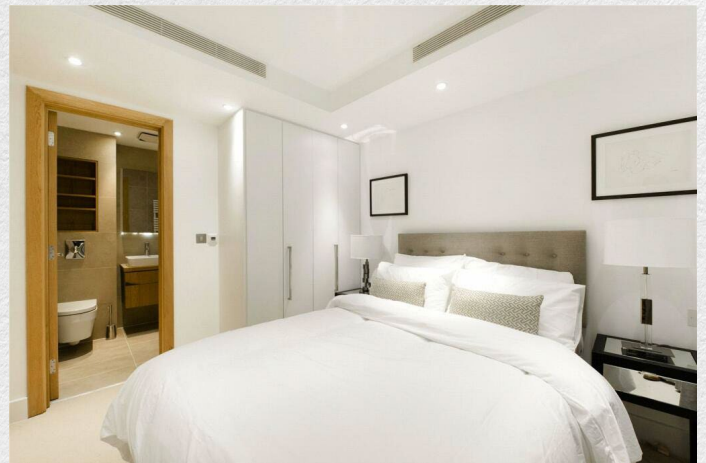
£895,000

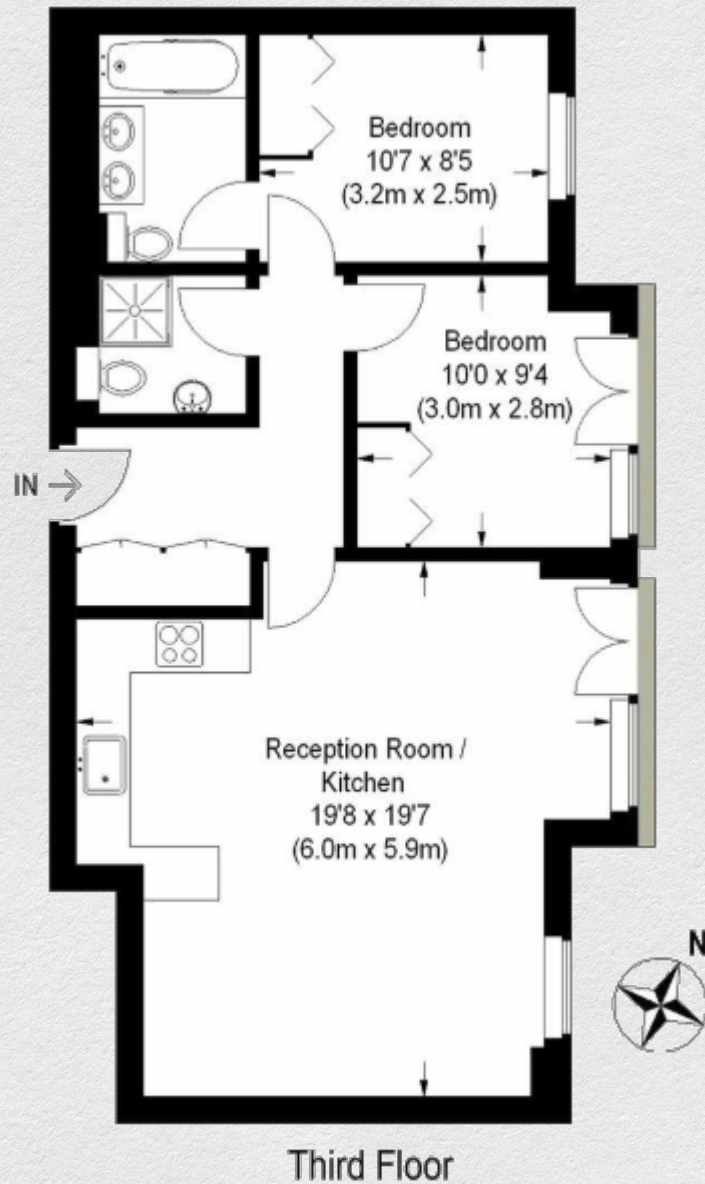
- Two bedrooms
- Two bathrooms
- New build on third floor
- 24hr Porter and lift access
- Juliet balconies throughout
- Access to private gardens in Hyde Park Square
- Close to Paddington Station / Lancaster Gate and Marble Arch
- Moments from Hyde Park and Connaught Village

A superbly laid out two-bedroom, two-bathroom apartment set on the third floor of No2 Hyde Park Square, 24hr concierge with lift access, fob activated entrance and lift offering both security and ease of living.

Spanning approximately 700 sq. ft, this apartment offers a spacious reception room/ kitchen. The layout is thoughtfully designed, with two double bedrooms, two bathrooms (one ensuite).

Hyde Park Square is one of London's most prestigious garden squares, moments to Connaught Village and London's Hyde Park. Transport links are close by with Paddington, Marble Arch & Lancaster Gate all a short distance away.





Address:

Hyde Park Square, London, W2

sq ft

bed

bath

700

2

2

*** For illustration purposes only. Could not be to scale. One-London aims to ensure accuracy but is not liable for any discrepancies.*