



**Guide Price**  
**£475,000**

**Freehold**

2x  1x  2x 

**Beesfield Lane,  
Farningham, Dartford,  
Kent, DA4**

**OVER 60?**

Secure this property  
for up to **59% less!**

*Wards*  
Helping you move forwards



## Main features

- Well maintained semi-detached bungalow
- Located in a sought after location in Farningham
- Off-road parking and a garage
- Bright and airy living accommodation
- Generous garden space

## Accommodation

### GROUND FLOOR

Hallway

Lounge: 16'9 x 10'11 (5.11m x 3.33m)

Kitchen: 19'0 x 9'7 (5.80m x 2.92m)

Bedroom 1: 13'6 x 8'10 (4.12m x 2.69m)

Bedroom 2: 13'7 x 10'7 (4.14m x 3.23m)

Shower Room: 7'5 x 6'0 (2.26m x 1.83m)

Sun Room: 14'3 x 9'0 (4.35m x 2.75m)

### OUTBUILDING

Garage

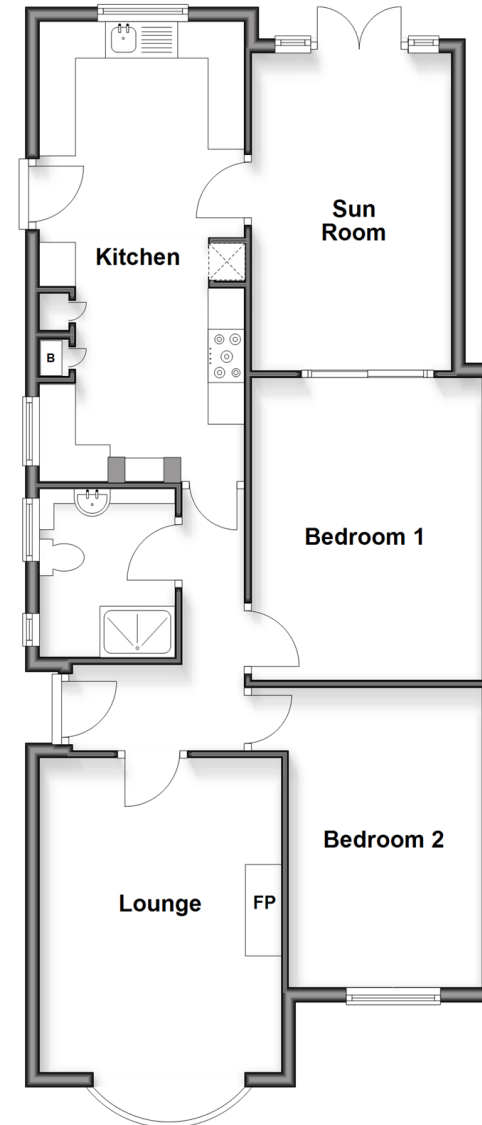
### OUTSIDE

Driveway

Rear Garden

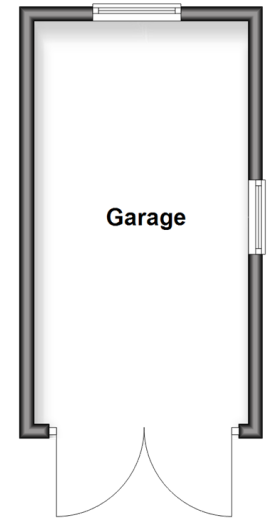
### Ground Floor

Approx. 81.4 sq. metres (876.1 sq. feet)



### Outbuilding

Approx. 16.4 sq. metres (176.3 sq. feet)



Call Eynsford - 01322 862844 ■ [wardsof Kent.co.uk](http://wardsof Kent.co.uk)

■ Through a Homewise Home For Life Plan people aged 60+ can secure this property for up to 59% less, by purchasing a Lifetime Lease



12520385/20260401/MC/SJ