

Victoria Road, KT6

£650,000

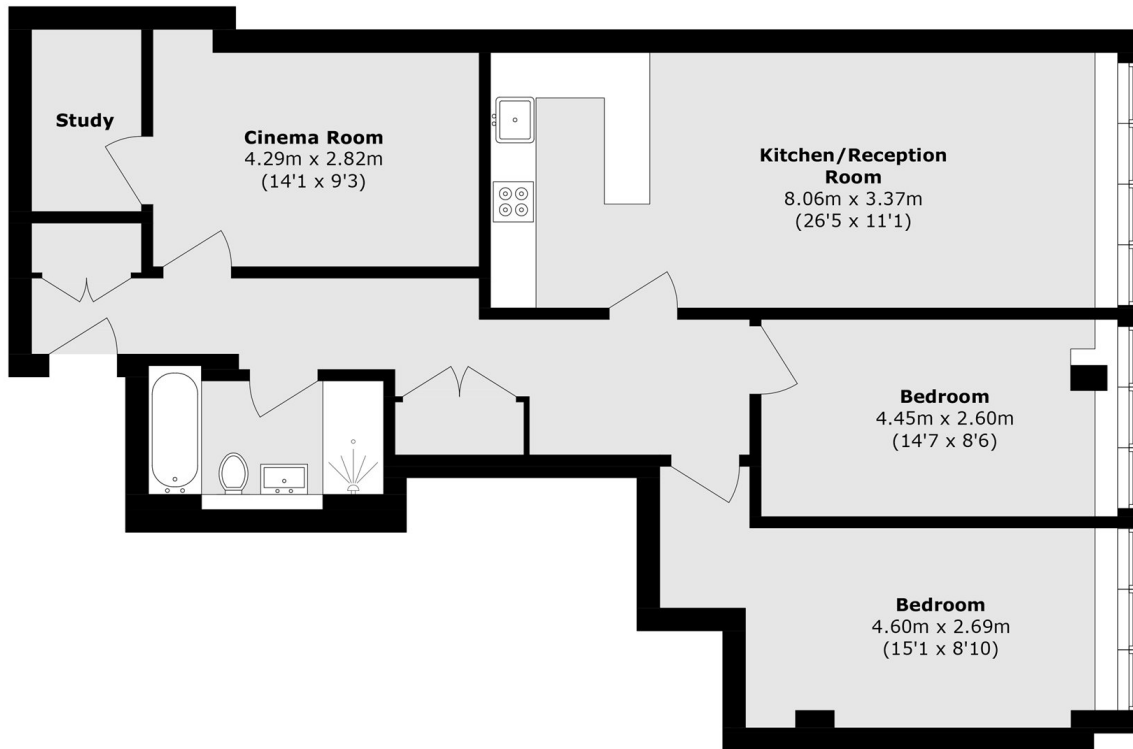
A spacious two bedroom apartment with an additional study/cinema room/exercise space in phase 2 of St Andrews House, a new exclusive development consisting of apartments that have been finished to a high specification. The properties have beautifully designed kitchens with quartz worktops, porcelain tiled bathrooms and oak engineered flooring with carpeted bedrooms. The development has a fabulous roof terrace and gardens with far reaching views available for all residents, providing a unique retreat for relaxing and socialising.

St Andrews House is perfectly located in central Surbiton with its vibrant atmosphere, offering easy access to a range of amenities including bars, restaurants and shops. Surbiton station is close by and provides excellent access to London Waterloo in under 20 minutes. The River Thames is a short walk away.

Features

- Brand New Build
- 10 Year Build Warranty
- Study/Cinema Room
- High Specification
- Close To Station
- Close To Shops

Victoria Road, Surbiton, KT6



Total area (approx.): 109.53 sq. m (1178.6 sq. ft)