



Linn Chilvers Drive, Heacham, PE31 7SW

welcome to

Linn Chilvers Drive, Heacham

A semi detached bungalow in a Heacham cul-de-sac, close to the beach and amenities. Built as a 2 bedroom but adapted to provide a large bedroom and spacious lounge with patio doors, kitchen, shower room and conservatory. Garage, driveway, gardens, gas central heating and double glazing.

Entrance Hall

Lounge-Diner

20' 2" x 10' 10" max (6.15m x 3.30m max)

Kitchen

12' 11" x 8' 9" (3.94m x 2.67m)

Conservatory

7' 10" x 7' 5" (2.39m x 2.26m)

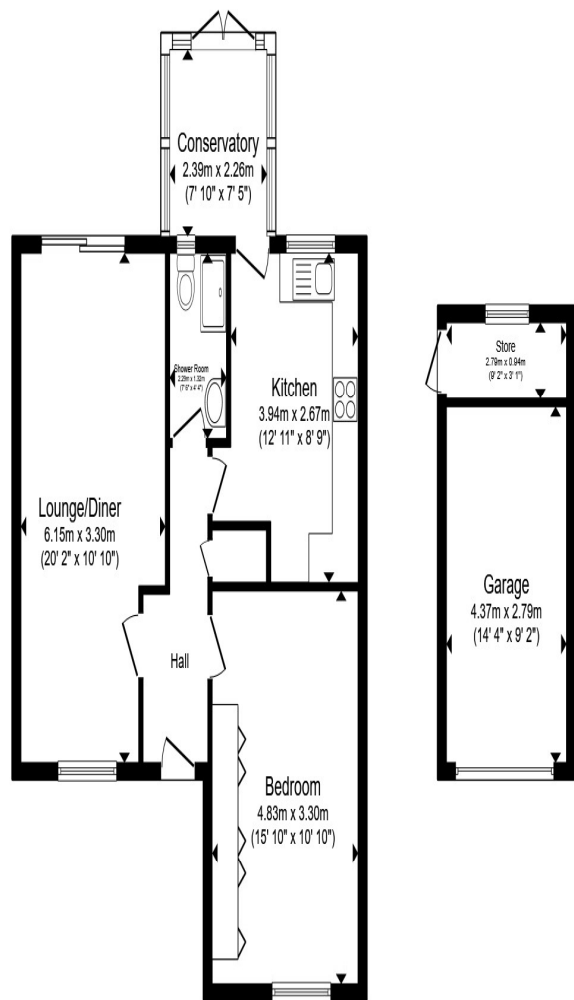
Bedroom One

15' 10" x 10' 10" (4.83m x 3.30m)

Shower Room

Garage

Garden Store



First Floor

Outbuilding

Total floor area 79.0 m² (850 sq.ft.) approx

This floor plan is for illustrative purposes only. It is not drawn to scale. Any measurements, floor areas (including any total floor area), openings and orientation are approximate. No details are guaranteed, they cannot be relied upon for any purpose and they do not form part of any agreement. No liability is taken for any error, omission or misstatement. A party must rely upon its own inspection(s). Powered by www.propertybox.io

