



Guide Price
£385,000

Freehold

3x  1x  1x 

**Auden Road, Larkfield,
Aylesford, Kent, ME20**

OVER 60?

Secure this property
for up to **59% less!**

Wards
Helping you move forwards



Main features

- Enjoy the quiet location of this popular Close
- Spacious lounge & dining area - great for entertaining
- Handy ground floor cloakroom
- Sunny & private rear garden
- Excellent commuter links - close to bus route, M20 & rail stations

Accommodation

GROUND FLOOR

Entrance Hall

Cloakroom

Kitchen: 10'1 x 8'6 (3.08m x 2.59m)

Lounge: 15'8 x 15'1 (4.78m x 4.60m)

Dining Area: 12'1 x 7'5 (3.69m x 2.26m)

Conservatory: 11'10 x 9'0 (3.61m x 2.75m)

FIRST FLOOR

Landing

Bedroom 1: 11'8 up to fitted wardrobes x 8'5 (3.56m x 2.57m)

Bedroom 2: 11'6 x 8'9 (3.51m x 2.67m)

Bedroom 3: 8'3 x 6'10 (2.52m x 2.08m)

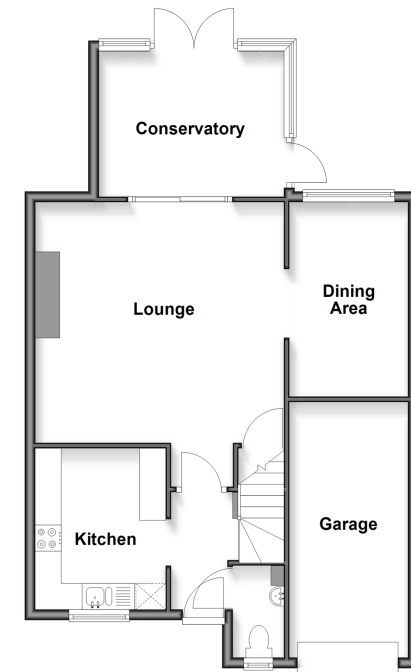
Bathroom

OUTSIDE

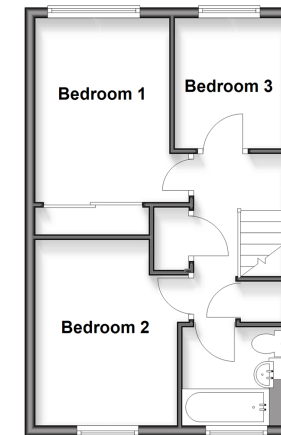
Driveway & Garage

Front & Rear Gardens

Ground Floor
Approx. 69.1 sq. metres (744.1 sq. feet)



First Floor
Approx. 37.1 sq. metres (399.3 sq. feet)



Unable to display material information. Please check with the branch for material information details for this property



12935732/20260423/CK/RT