



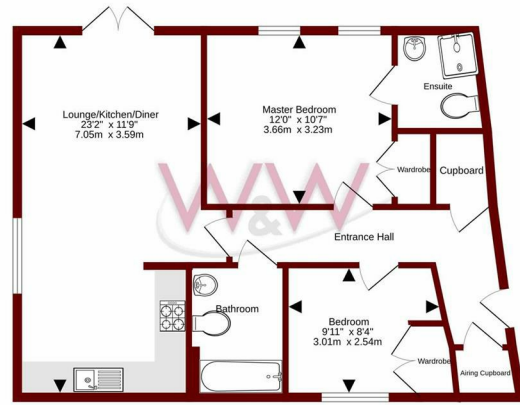
Lynn Crescent | Titchfield Common | Fareham | PO14 4FP

**£1,200 Per Month**





Ground Floor  
696 sq.ft. (64.6 sq.m.) approx.



Energy Efficiency Rating		Current	Potential
Very energy efficient - lower running costs			
(92 plus)	A		
(81-91)	B		
(69-80)	C		
(55-68)	D		
(39-54)	E		
(21-38)	F		
(1-20)	G		
Not energy efficient - higher running costs			
England & Wales		80	80
EU Directive 2002/91/EC			



## Description

W&W are delighted to offer for sale this two bedroom ground floor apartment. Neutrally decorated throughout, the property boasts two double bedrooms, a kitchen with a washing machine and dishwasher included and a built in oven and hob with extractor, modern re-fitted family bathroom & modern re-fitted en-suite shower room to the main bedroom. The property also benefits from an allocated parking space and communal gardens.

Lynn Crescent is situated in the ever popular location of Titchfield Common the local shops and amenities of Titchfield & Locks Heath are both less than 2 miles away, while the local pub is just a short stroll. Transport links are easily accessible including A27 & M27.

## Key features



H3 Whiteley Shopping Centre  
Whiteley Way  
Whiteley  
Hants  
PO15 7PD  
01489 580800  
pm@walkerwaterer.co.uk  
www.walkerwaterer.co.uk