



smarthomes

Welford Road

Shirley, Solihull

- A Characterful Three Bedroom Semi-Detached Property
- Extended Fitted Kitchen
- Two Reception Rooms
- Cottage Style Rear Garden & Driveway Parking

Offers Over £425,000

Current EPC Rating - D
Current Council Tax Band - D





Property Description

A characterful three bedroom semi-detached property conveniently situated for Tudor Grange catchment and benefiting from no upward chain. Briefly affording two reception rooms, extended kitchen, guest WC, family shower room, cottage style rear garden, garage and off road parking

Shirley is home to a host of leisure and retail facilities. For shopping, Sears Retail Park and Parkgate are packed with an array of popular major retail names, and Shirley high street has a good variety of independently run outlets. Just minutes away you can enjoy the convenience of gymnasiums along with a choice of large supermarkets like Asda, Sainsburys, Aldi and Tesco. Food lovers are spoilt for choice, within walking distance there is a diverse mix of cultural tastes to experience, from fine dining restaurants through to numerous cafés and bars. Local schools include Blossomfield Infant and Nursery School, Haslucks Green Junior School, Our Lady of the Wayside Catholic Primary School, Tudor Grange Primary Academy St James, Light Hall Secondary School, Tudor Grange Academy and Alderbrook School and Sixth Form to name but a few. Commuters are particularly served well, with regular bus and train services and easy access to Junction 4 of the M42.



Rooms & Measurements

Dining Room to Front 4.8m (into bay) x 3.2m (15'8" x 10'5")

Lounge to Rear 4.6m (into bay) x 3.5m (15'1" x 11'5")

Extended Kitchen 4.2m x 3.9m (13'9" x 12'9")

Bedroom One to Rear 4.5m (into bay) x 3.5m (14'9" x 11'5")

Bedroom Two to Front 4.9m (into bay) x 3.2m (16'0" x 10'5")

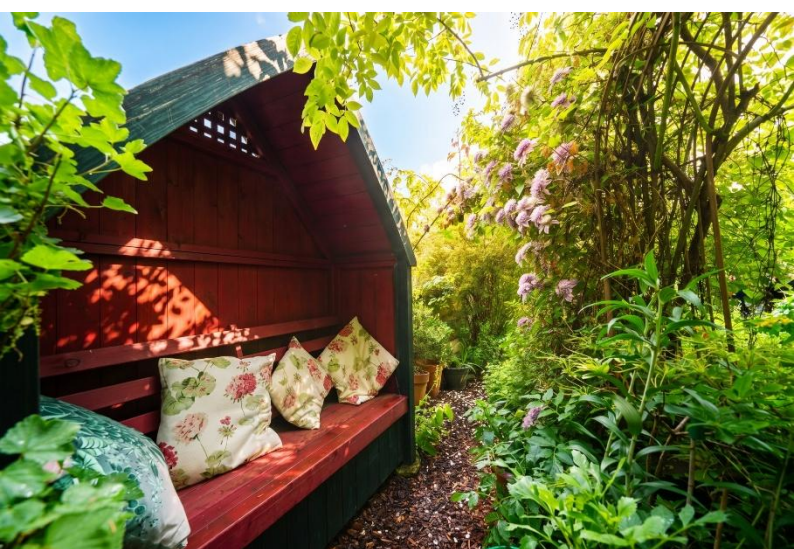
Bedroom Three to Front 2.8m x 2m (9'2" x 6'6")

Family Shower Room to Rear 2.7m x 2.4m (8'10" x 7'10")

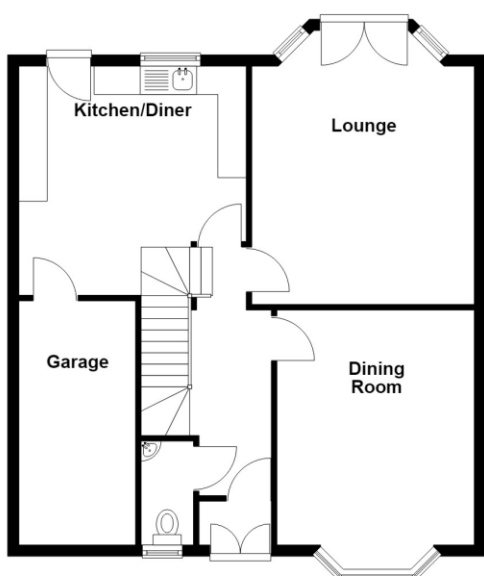
Garage 4.7m x 2.2m (15'5" x 7'2")

Tenure

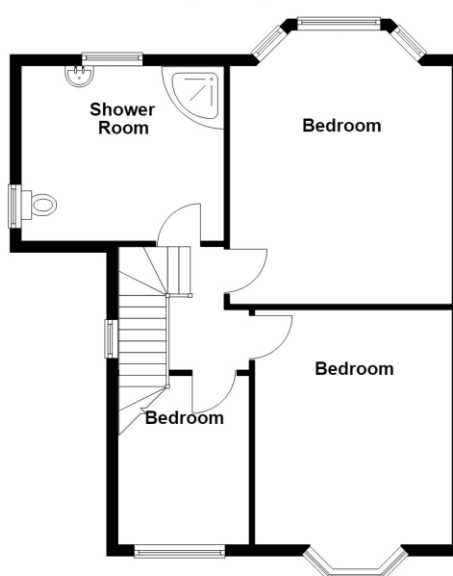
We are advised by the vendor that the property is freehold. We would advise all interested parties to obtain verification through their own solicitor or legal representative. EPC supplied by Nigel Hodges. Current council tax band – D



Ground Floor
Approx. 748.5 sq. feet



First Floor
Approx. 612.4 sq. feet



Total area: approx. 1360.9 sq. feet

316 Stratford Road
Shirley
Solihull
B90 3DN

www.smart-homes.co.uk
0121 744 4144

Agents Note: Whilst every care has been taken to prepare these particulars, they are for guidance purposes only. We believe all information to be correct from the day of marketing however, we advise and recommend that your conveyancer and or surveyor verifies all information supplied. All measurements are approximate are for general guidance purposes only and whilst every care has been taken to ensure their accuracy, they should not be relied upon and potential buyers are advised to recheck the measurements.