

## Lauderdale Road, W9

£375,000

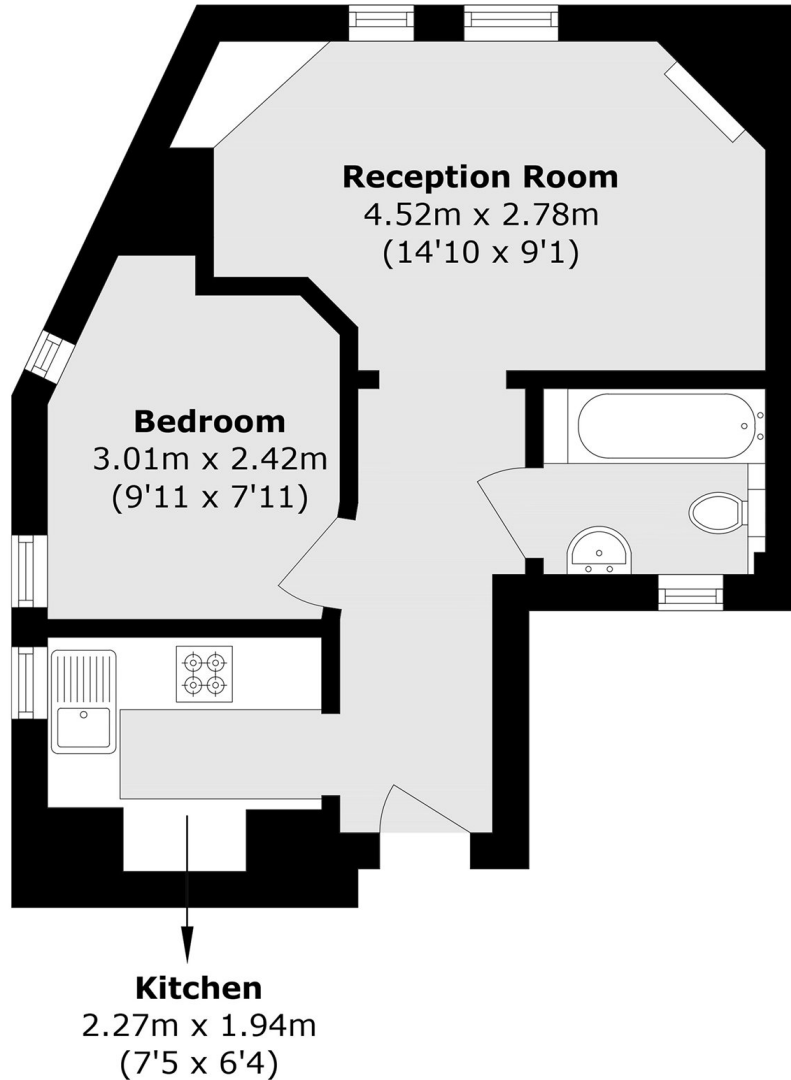
A raised ground floor flat set in one of Maida Vale's iconic red brick mansions. This well-presented flat comes complete with a double bedroom, bright reception, separate kitchen and wooden flooring throughout.

Lauderdale Road is within walking distance of both Maida Vale and Warwick Avenue underground stations (Bakerloo line), the canal in Little Venice and the amenities along Clifton Gardens.

### Features

- Red Brick Mansion
- Raised Ground Floor
- One Bedroom
- Separate Kitchen
- Chain Free
- Prime Location

# Lauderdale Road, Maida Vale, W9



Total area (approx.): 32.7 sq. m (352.0 sq. ft)