



Vernon Avenue, SW20

£2,500 Per calendar month

A terraced house with three double bedrooms, a large living room and fully fitted kitchen leading onto a private garden. This house is perfect for a young family or professional sharers.

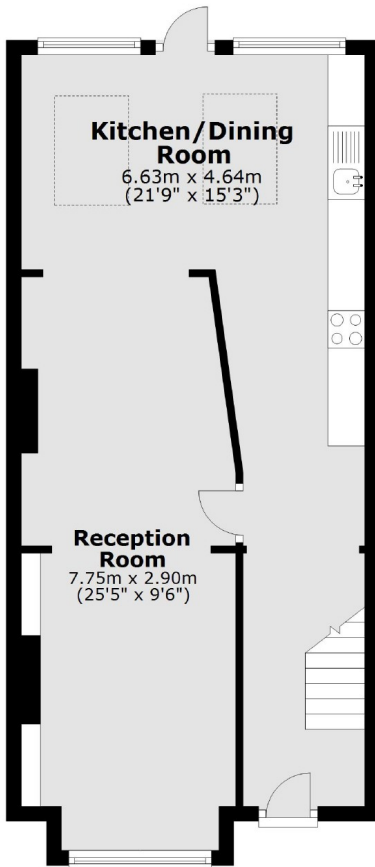
Located in one of the desirable 'Apostles' roads just a short walk from Raynes Park Station with its quick connections into London. A multitude of shops, restaurants, pubs and a Waitrose also just a short walk away.

Features

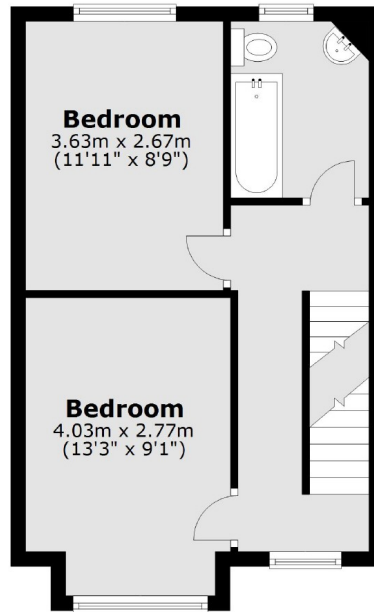
- Three Double Bedrooms
- Private Garden
- Eat-in Kitchen
- Large Reception
- Ample Storage
- Cul-de-sac

Vernon Avenue, London, SW20

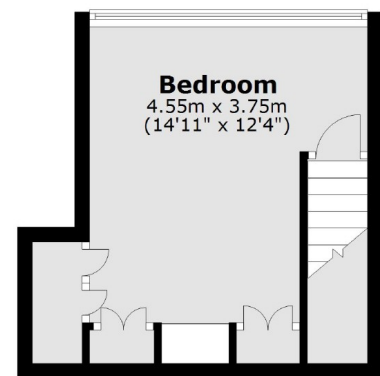
Ground Floor



First Floor



Second Floor



Total area: approx. 101.2 sq. metres (1089.0 sq. feet)